

Knotted Legendrian surfaces with few Reeb chords

GEORGIOS DIMITROGLOU RIZELL

For $g > 0$, we construct $g + 1$ Legendrian embeddings of a surface of genus g into $J^1(\mathbb{R}^2) = \mathbb{R}^5$ which lie in pairwise distinct Legendrian isotopy classes and which all have $g + 1$ transverse Reeb chords ($g + 1$ is the conjecturally minimal number of chords). Furthermore, for g of the $g + 1$ embeddings the Legendrian contact homology DGA does not admit any augmentation over \mathbb{Z}_2 , and hence cannot be linearized. We also investigate these surfaces from the point of view of the theory of generating families. Finally, we consider Legendrian spheres and planes in $J^1(S^2)$ from a similar perspective.

53D42; 53D12

1 Introduction

We will consider contact manifolds of the form $J^1(M) = T^*M \times \mathbb{R}$, where M is a 2-dimensional manifold, equipped with the contact form $\alpha := dz + \theta$. Here $\theta = -\sum_i p^i dq^i$ denotes the canonical (or Liouville) form on T^*M and z is the coordinate of the \mathbb{R} -factor.

An embedded surface $L \subset J^1(M)$ is called *Legendrian* if L is everywhere tangent to the contact distribution $\ker(\alpha)$. The *Reeb vector field*, which is defined by

$$\iota_R d\alpha = 0, \quad \alpha(R) = 1,$$

here becomes $R = \partial_z$. A *Reeb chord* on L is an integral curve of R having positive length and both endpoints on L . When considering immersed Legendrian submanifolds, we say that self-intersections are zero-length Reeb chords.

We call the natural projections

$$\Pi_F: J^1(M) \rightarrow M \times \mathbb{R},$$

$$\Pi_L: J^1(M) \rightarrow T^*M,$$

the *front projection* and the *Lagrangian projection*, respectively. A Legendrian submanifold $L \subset J^1(M)$ projects to an exact immersed Lagrangian submanifold $\Pi_L(L)$

in the exact symplectic manifold $(T^*M, d\theta)$. Reeb chords of L correspond to self-intersections of its Lagrangian projection.

For a generic closed Legendrian submanifold $L \subset J^1(M)$ there are only finitely many Reeb chords, each projecting to a transverse double-point of $\Pi_L(L)$ under the Lagrangian projection. We call a Legendrian satisfying this property *chord generic*.

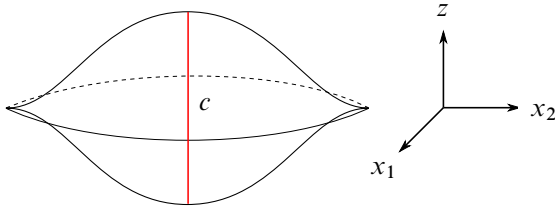


Figure 1: The front projection of the standard sphere $L_{\text{std}} \subset J^1(\mathbb{R}^2)$

Let $L_{\text{std}} \subset J^1(\mathbb{R}^2) = \mathbb{R}^5$ denote the Legendrian sphere whose front projection is shown in Figure 1. Note that L_{std} only has one Reeb chord, and that up to isotopy it is the only known Legendrian sphere in $J^1(\mathbb{R}^2)$ with this property.

In Section 4 we construct, for each $g > 0$, the Legendrian surfaces $L_{g,k} \subset J^1(\mathbb{R}^2) = \mathbb{R}^5$ of genus g by attaching k “knotted” and $g - k$ “standard” Legendrian handles to L_{std} , where $k = 0, \dots, g$. Each surface has $g + 1$ transverse Reeb chords, which according to a conjecture of Arnold is the minimal number of Reeb chords for a Legendrian surface in $J^1(\mathbb{R}^2)$ of genus g . This conjecture is only known to be true for $g \leq 1$. It follows from elementary properties of generic Lagrangian immersions when $g = 0$, and from Gromov’s theorem of nonexistence of exact Lagrangian submanifolds in \mathbb{C}^n when $g = 1$.

We will study the Legendrian contact homology of $L_{g,k}$. This theory associates a DGA (short for differential graded algebra) to a Legendrian submanifold. The DGA is then invariant up to homotopy equivalence under Legendrian isotopy. Legendrian contact homology was introduced by Eliashberg, Givental and Hofer in [9], and by Chekanov in [2] for standard contact \mathbb{R}^3 . We will also study the $L_{g,k}$ in terms of generating families (see Definition 2.11). We show the following theorem.

Theorem 1.1 *The $g + 1$ Legendrian surfaces $L_{g,k} \subset J^1(\mathbb{R}^2)$ of genus g , where $k = 0, \dots, g$, are pairwise non-Legendrian isotopic. Furthermore, $L_{g,k}$ has a Legendrian contact homology DGA admitting an augmentation with coefficients in \mathbb{Z}_2 if and only if $k = 0$. Also, $L_{g,k}$ admits a generating family if and only if $k = 0$.*

Remark There is a correspondence between generating families for a Legendrian knot in $J^1(\mathbb{R}) \cong \mathbb{R}^3$ and augmentations for its DGA with coefficients in \mathbb{Z}_2 . See eg Fuchs and Rutherford [11]. It is not known whether a similar result holds in higher dimensions.

When $k > 0$, the DGA of $L_{g,k}$ with coefficients in \mathbb{Z}_2 has 1 in the image of the boundary operator. Hence its homology vanishes, and thus it cannot be used to distinguish the different $L_{g,k}$. Moreover, it follows that its DGA has no augmentation with coefficients in \mathbb{Z}_2 .

To distinguish the different $L_{g,k}$ we consider DGAs with coefficients in group ring $\mathbb{Z}[H_1(L_{g,k}; \mathbb{Z})]$ (one may also use coefficients in $\mathbb{Z}_2[H_1(L_{g,k}; \mathbb{Z})]$). We will study the augmentation varieties of these DGAs. This is a Legendrian isotopy invariant introduced by L Ng in [13].

In Section 5 we study the following Legendrian planes. Let $F_0 := T_p^*S^2 \subset T^*S^2$ be a Lagrangian fiber and let $F_k \subset T^*S^2$, where $k \in \mathbb{Z}$, be the image of F_0 under k iterations of a Dehn twist along the zero-section. The plane F_k coincides with F_0 outside of a compact set.

Since $H^1(F_k; \mathbb{R}) = 0$, F_k is an exact embedded Lagrangian submanifold and we may lift it to a Legendrian submanifold of J^1S^2 . For the same reason, a Lagrangian isotopy of F_k induces a Legendrian isotopy of the lift. Moreover, since F_k is a plane, a compactly supported Lagrangian isotopy may be lifted to a compactly supported Legendrian isotopy.

By computing the Legendrian contact homology of the Legendrian lift of the link $F_k \cup T_q^*S^2$, we show the following.

Theorem 1.2 *There is no compactly supported Legendrian isotopy taking F_k to F_l if $k \neq l$. Consequently, there is no compactly supported Lagrangian isotopy taking F_k to F_l if $k \neq l$. However, there are such compactly supported smooth isotopies if $k \equiv l \pmod 2$.*

The effect of Dehn twists on Floer Homology was studied by P Seidel in [15], and our argument is a version of it.

In Section 6 we construct a Legendrian sphere $L_{\text{knot}} \subset J^1(S^2)$ with one Reeb chord which is not Legendrian isotopic to L_{std} . However, according to Proposition 6.2, L_{knot} has a Lagrangian projection which is smoothly ambient isotopic to $\Pi_L(L_{\text{std}})$. Observe that the unit disk bundle D^*S^2 with its canonical symplectic form is symplectomorphic to a neighborhood of the antidiagonal in $S^2 \times S^2$. We show the following result.

Theorem 1.3 L_{std} and L_{knot} are not Legendrian isotopic. Furthermore, $\Pi_L(L_{\text{knot}}) \subset D^*S^2 \subset S^2 \times S^2$ cannot be mapped to $\Pi_L(L_{\text{std}}) \subset D^*S^2$ by a symplectomorphism of $S^2 \times S^2$ which is Hamiltonian isotopic to the identity.

The first result is proved by computing the Legendrian contact homology of the link $L_{\text{knot}} \cup T_q S^2$. The second result follows by relating $\Pi_L(L_{\text{knot}})$ to the nondisplaceable Lagrangian tori treated by Fukaya, Oh, Ohta and Ono [12].

2 Background

In this section we recall the needed results and definitions. We give a review of Legendrian contact homology, linearizations, and the augmentation variety. We also give a description of gradient flow trees, which will be used for computing the differentials of the DGAs. Finally, we briefly discuss the theory of generating families for Legendrian submanifolds.

2.1 Legendrian contact homology

We now recall the results in Ekholm, Etnyre and Sullivan [5; 8; 7] in order to define Legendrian contact homology for Legendrian submanifolds of $J^1(M)$ with coefficients in \mathbb{Z}_2 and \mathbb{Z} . For our purposes we will only need the cases $M = \mathbb{R}^2$ and $M = S^2$, respectively.

The Legendrian contact homology algebra is a DGA associated to a Legendrian submanifold L , assumed to be chord generic, which is generated by the Reeb chords of L . The differential counts pseudoholomorphic disks. The homotopy type, and even the stable isomorphism type (see below), of the DGA is then invariant under Legendrian isotopy. The most obvious consequence is that the homology of the complex, the so called Legendrian contact homology, is invariant under Legendrian isotopy.

2.1.1 The algebra For a chord generic Legendrian submanifold $L \subset J^1(M)$ with the set Q of Reeb chords, we consider the unital algebra $\mathcal{A}_\Lambda(L) = \Lambda\langle Q \rangle$ freely generated over the ring Λ . We may always take $\Lambda = \mathbb{Z}_2$, but in the case when L is spin we may also take $\Lambda = \mathbb{Z}, \mathbb{Q}$ or \mathbb{C} . In the latter case, the differential depends on the choice of a spin structure on L . For details we refer to Ekholm, Etnyre and Sullivan [7].

We will also consider the algebra $\Lambda[H_1(L; \mathbb{Z})] \otimes_\Lambda \mathcal{A}_\Lambda(L)$ with coefficients in the group ring $\Lambda[H_1(L; \mathbb{Z})]$.

2.1.2 The grading For a Legendrian submanifold $L \subset J^1(M) = T^*M \times \mathbb{R}$ there is an induced Maslov class

$$\mu: H_1(L; \mathbb{Z}) \rightarrow \mathbb{Z},$$

which in our setting can be computed using the following formula. Let L be front generic, and let η be a closed curve on L which intersects the singular set of the front transversely at cusp edges. Recall that z is the coordinate of the \mathbb{R} -factor of $J^1(M) = T^*M \times \mathbb{R}$. Let $D(\eta)$ and $U(\eta)$ denote the number of cusp edges transversely crossed by η in the downward and upward direction relative to the z -coordinate, respectively. Ekholm, Etnyre and Sullivan [6] prove that

$$(1) \quad \mu([\eta]) = D(\eta) - U(\eta).$$

We will only consider the case when the Maslov class vanishes. In this case the algebra $\mathcal{A}_\Lambda(L)$ is graded as follows. For each generator, ie Reeb chord $c \in Q$, we fix a path $\gamma_c: I \rightarrow L$ with both ends on the Reeb chord such that γ_c starts at the point with the higher z -coordinate. Again, we assume that γ_c intersects the singularities of the front projection transversely at cusp edges. We call γ_c a *capping path* for c . We now grade the generator c by

$$|c| = \nu(\gamma_c) - 1,$$

where $\nu(\gamma_c)$ denotes the *Conley–Zehnder index* of γ_c .

In our setting the Conley–Zehnder index may be computed as follows. Let f_u and f_l be the local functions on M defining the z -coordinates of the upper and lower sheets of L near the endpoints of c , respectively. We define $h_c := f_u - f_l$. Let $p \in M$ be the projection of c to M . Observe that the fact that c is a transverse Reeb chord is equivalent to h_c having a nondegenerate critical point at p . We then have the formula

$$(2) \quad \nu(\gamma_c) = D(\gamma_c) - U(\gamma_c) + \text{index}_p(d^2h_c),$$

where D and U are defined as above and where $\text{index}_p(d^2h_c)$ is the Morse index of h_c at $p \in M$. See [6] for a general definition of the Conley–Zehnder index and a proof of the above formula.

If the Maslov class does not vanish, we must use coefficients in $\Lambda[H_1(L; \mathbb{Z})]$ to have a well-defined grading over \mathbb{Z} . Elements $A \in H_1(L; \mathbb{Z})$ are then graded by

$$|A| = -\mu(A).$$

In our cases, since μ vanishes, the coefficients have zero grading.

In the case when L has several connected components, Reeb chords between two different components are called *mixed*, while Reeb chords between the same component are called *pure*. Mixed Reeb chords can be graded in the following way. For each

pair of components L_0, L_1 , select points $p_0 \in L_0$ and $p_1 \in L_1$ both projecting to the same point on M , and such that neither lies on a singularity of the front projection. Let c be a mixed Reeb chord starting on L_0 and ending on L_1 . A capping path is then chosen as a path on L_1 starting at c and ending on p_1 , together with a path on L_0 starting at p_0 and ending on c . The grading of a mixed chord can then be defined as before, where the Conley–Zehnder index is computed as in [Formula \(2\)](#) for this (discontinuous) capping path.

Observe that the choice of points p_0 and p_1 may affect the grading of the mixed chords, hence this grading is not invariant under Legendrian isotopy in general. However, the difference in degree of two mixed chords between two fixed components is well-defined.

2.1.3 The differential Choose an almost complex structure J on T^*M compatible with the canonical symplectic form. We are interested in finite-energy pseudoholomorphic disks in T^*M having boundary on $\Pi_L(L)$ and boundary punctures asymptotic to the double points of $\Pi_L(L)$. A puncture of the disk will be called *positive* in case the oriented boundary of the disk makes a jump to a sheet with higher z -coordinate at the Reeb chord, and will otherwise be called *negative*. We assume that the chosen J is *regular*, ie that the solution spaces of J -holomorphic disks with one positive puncture are transversely cut out manifolds of the expected dimension. (See [\[8\]](#) for the existence of such almost complex structures.)

Since $\Pi_L(L)$ is an exact immersed Lagrangian, one can easily show the following formula for the (symplectic) area of a disk $D \subset T^*M$ with boundary on $\Pi_L(L)$, having the positive punctures a_1, \dots, a_n and the negative punctures b_1, \dots, b_n :

$$(3) \quad \text{Area}(D) = \ell(a_1) + \dots + \ell(a_n) - \ell(b_1) - \dots - \ell(b_n),$$

where $\ell(c)$ denotes the *action* of a Reeb chord c , which is defined by

$$\ell(c) := \int_c \alpha > 0.$$

One thus immediately concludes that a nonconstant pseudoholomorphic disk with boundary on $\Pi_L(L)$ must have at least one positive puncture.

Let $\mathcal{M}(a; b_1, \dots, b_n; A)$ denote the moduli space of pseudoholomorphic disks having boundary on L , a positive puncture at $a \in Q$ and negative punctures at $b_i \in Q$ in the above order relative the orientation of the boundary. We moreover require that when closing up the boundary of the disk with the capping paths at the punctures (oriented appropriately), the cycle obtained is contained in the class $A \in H_1(L; \mathbb{Z})$. We define

the differential on the generators by the formula

$$\partial a = \sum_{\dim \mathcal{M}=0} |\mathcal{M}(a; b_1, \dots, b_n; A)| Ab_1 \cdots b_n,$$

where $|\mathcal{M}(a; b_1, \dots, b_n; A)|$ is the algebraic number of elements in the compact zero-dimensional moduli space. The above count has to be performed modulo 2 unless the moduli spaces are coherently oriented. When L is spin, a coherent orientation can be given after making initial choices. If we are working with coefficients in Λ instead of $\Lambda[H_1(L; \mathbb{Z})]$, we simply project the group ring coefficient A to 1 in the above formula.

For a generic almost complex structure J , the dimension of the above moduli space is given by

$$\dim \mathcal{M}(a; b_1, \dots, b_n; A) = |a| - |b_1| - \cdots - |b_n| + \mu(A) - 1,$$

and it follows that ∂ is a map of degree -1 .

The differential defined on the generators is extended to arbitrary elements in the algebra by $\Lambda[H_1(L; \mathbb{Z})]$ -linearity and by the Leibniz rule

$$\partial(ab) = \partial(a)b + (-1)^{|a|}a\partial(b).$$

Since L is an exact Lagrangian immersion, no bubbling of disks without punctures can occur, and a standard argument from Floer theory shows that $\partial^2 = 0$. Observe that the sum occurring in the differential always is finite because of [Formula \(3\)](#) and the fact that there are only finitely many Reeb chords.

2.1.4 Invariance under Legendrian isotopy Let $\mathcal{A} = R\langle a_1, \dots, a_m \rangle$ and $\mathcal{A}' = R\langle a'_1, \dots, a'_m \rangle$ be free unital algebras over the ring R . An isomorphism $\varphi: \mathcal{A} \rightarrow \mathcal{A}'$ of semifree DGAs is *tame* if, after some identification of the generators of \mathcal{A} and \mathcal{A}' , it can be written as a composition of *elementary* automorphisms, ie automorphisms defined on the generators of \mathcal{A} by

$$\varphi(a_i) = \begin{cases} a_i & i \neq j, \\ Aa_j + \mathbf{b} & i = j, \end{cases}$$

for some fixed j , where $A \in R$ is invertible, and \mathbf{b} is an element of the unital subalgebra generated by $\{a_i; i \neq j\}$.

The *stabilization in degree j* of (\mathcal{A}, ∂) , denoted by $\mathcal{S}_j(\mathcal{A}, \partial)$, is the following operation. Add two generators a and b with $|a| = j$ and $|b| = j - 1$ to the generators of $\mathcal{A} = R\langle a_1, \dots, a_m \rangle$. The differential ∂' of the stabilization is defined to be ∂ on old

generators, while $\partial'(a) = b$ and $\partial'b = 0$ for the new generators. It is a standard result (see Chekanov [2]) that (\mathcal{A}, ∂) and $S_j(\mathcal{A}, \partial)$ are homotopy equivalent.

Theorem 2.1 [7] *Let $L \subset J^1(M)$ be a Legendrian submanifold (which is assumed to be spin and where a fixed spin-structure has been chosen in the case when Λ has characteristic different from 2). The stable tame isomorphism class of its associated DGA $\Lambda[H_1(L; \mathbb{Z})] \otimes \mathcal{A}_\Lambda(L)$ is preserved (after possibly shifting the degree of the mixed chords) under Legendrian isotopy and independent of the choice of a generic compatible almost complex structure. Hence, the homology*

$$HC_\bullet(L; \Lambda[H_1(L; \mathbb{Z})]) := H_\bullet(\Lambda[H_1(L; \mathbb{Z})] \otimes \mathcal{A}_\Lambda(L), \partial)$$

is invariant under Legendrian isotopy. In particular, the homology

$$HC_\bullet(L; \mathbb{Z}_2) := H_\bullet(\mathcal{A}_{\mathbb{Z}_2}(L), \partial)$$

with coefficients in \mathbb{Z}_2 is invariant under Legendrian isotopy.

Remark Different choices of capping paths give tame isomorphic DGAs. Changing the capping path of a Reeb chord $c \in Q$ amounts to adding a representative of some class $\eta_c \in H_1(L; \mathbb{Z})$ to the old capping path. This gives the new DGA $(\Lambda[H_1(L; \mathbb{Z})] \otimes_\Lambda \mathcal{A}_\Lambda, \varphi \partial \varphi^{-1})$, where

$$\varphi: (\Lambda[H_1(L; \mathbb{Z})] \otimes_\Lambda \mathcal{A}_\Lambda, \partial) \rightarrow (\Lambda[H_1(L; \mathbb{Z})] \otimes_\Lambda \mathcal{A}_\Lambda, \varphi \partial \varphi^{-1})$$

is the tame automorphism defined by mapping $c \mapsto \eta_c c$, while acting by identity on the rest of the generators.

Remark The choice of spin structure on L induces the following isomorphism of the DGAs involved. Let \mathfrak{s}_0 and \mathfrak{s}_1 be two spin structures, and let \mathfrak{s}_i induce the DGA $([H_1(L; \mathbb{Z})] \otimes \mathcal{A}, \partial_{\mathfrak{s}_i})$. Then there is an isomorphism of DGAs (considered as \mathbb{Z} -algebras)

$$\varphi: (\mathbb{Z}[H_1(L; \mathbb{Z})] \otimes \mathcal{A}, \partial_{\mathfrak{s}_0}) \rightarrow (\mathbb{Z}[H_1(L; \mathbb{Z})] \otimes \mathcal{A}, \partial_{\mathfrak{s}_1})$$

defined by

$$\varphi(A) = (-1)^{d(\mathfrak{s}_0, \mathfrak{s}_1)(A)} A$$

for $A \in H_1(L; \mathbb{Z})$, while acting by identity on all generators coming from Reeb chords. Here $d(\mathfrak{s}_0, \mathfrak{s}_1) \in H^1(L; \mathbb{Z}_2)$ is the difference cochain of the two spin structures.

2.1.5 Linearizations and augmentations Linearized contact homology was introduced by Chekanov [2]. This is a stable tame isomorphism invariant of a DGA and hence a Legendrian isotopy invariant.

Let $\mathcal{A}_\Lambda = \bigoplus_{i=0}^\infty \mathcal{A}_\Lambda^i$ be the module decomposition with respect to word-length. Decompose $\partial = \bigoplus_i \partial_i$ accordingly and note that if $\partial_0 = 0$ on generators, it follows that $(\partial_1)^2 = 0$. We will call a DGA satisfying $\partial_0 = 0$ *good*, and call the homology $H_\bullet(\mathcal{A}^1, \partial_1)$ its *linearized contact homology*.

An *augmentation* of $(\mathcal{A}_\Lambda, \partial)$ is a unital DGA morphism

$$\epsilon: (\mathcal{A}_\Lambda, \partial) \rightarrow (\Lambda, 0).$$

It induces a tame automorphism Φ^ϵ defined on the generators by $c \mapsto c + \epsilon(c)$. This map Φ^ϵ conjugates ∂ to

$$\partial^\epsilon := \Phi^\epsilon \partial (\Phi^\epsilon)^{-1} = \Phi^\epsilon \partial,$$

where $(\mathcal{A}_\Lambda, \partial^\epsilon)$ can be seen to be good. We denote the induced linearized contact homology by

$$HLC_\bullet(L; \Lambda, \epsilon) := H_\bullet(\mathcal{A}(L)^1, (\partial^\epsilon)_1).$$

Theorem 2.2 [2, 5.1] *Let (\mathcal{A}, ∂) be a DGA. The set of isomorphism classes of the graded vector spaces*

$$H_\bullet(\mathcal{A}^1, (\partial^\epsilon)_1)$$

for all augmentations ϵ is invariant under stable tame isomorphism. Hence, when (\mathcal{A}, ∂) is the DGA associated to a Legendrian submanifold, this set is a Legendrian isotopy invariant.

2.1.6 The augmentation variety Ng [13] introduced the augmentation variety. Let \mathbb{F} be an algebraically closed field. In the following we suppose that $H_1(L; \mathbb{Z})$ is a free \mathbb{Z} -module and that the coefficient ring $\mathbb{F}[H_1(L; \mathbb{Z})]$ consists of elements of degree zero only (ie that the Maslov class vanishes).

The maximal ideal spectrum

$$\text{Sp}(\mathbb{F}[H_1(L; \mathbb{Z})]) \simeq (\mathbb{F}^*)^{\text{rank} H_1(L; \mathbb{Z})}$$

can be identified with the set of unital algebra morphisms

$$\rho: \mathbb{F}[H_1(L; \mathbb{Z})] \rightarrow \mathbb{F}.$$

Extending ρ by identity on the generators induces a unital DGA chain map

$$\rho: (\mathbb{F}[H_1(L; \mathbb{Z})] \otimes \mathcal{A}_\mathbb{F}, \partial) \rightarrow (\mathcal{A}_\mathbb{F}, \partial^\rho := \rho \partial).$$

Definition 2.3 Let $(\mathbb{F}[H_1(L; \mathbb{Z})] \otimes \mathcal{A}_{\mathbb{F}}, \partial)$ be a DGA with coefficients in the group ring. Its *augmentation variety* is the subvariety

$$\text{AugVar}(\mathbb{F}[H_1(L; \mathbb{Z})] \otimes \mathcal{A}_{\mathbb{F}}, \partial) \subset \text{Sp}(\mathbb{F}[H_1(L; \mathbb{Z})])$$

defined as the Zariski closure of the set of points $\rho \in \text{Sp}(\mathbb{F}[H_1(L; \mathbb{Z})])$ for which the chain complex $(\mathcal{A}_{\mathbb{F}}, \partial^\rho)$ has an augmentation.

This construction can be seen to be a contravariant functor from the category of finitely generated semifree DGAs with coefficients in the group-ring $\mathbb{F}[H_1(L; \mathbb{Z})]$ to the category of algebraic subvarieties of $\text{Sp}(\mathbb{F}[H_1(L; \mathbb{Z})])$. A unital DGA morphism will induce an inclusion of the respective subvarieties.

Lemma 2.4 Consider a unital algebra map

$$\rho: \mathbb{F}[H_1(L, \mathbb{Z})] \rightarrow \mathbb{F},$$

and let $\Phi: (\mathbb{F}[H_1(L, \mathbb{Z})] \otimes \mathcal{A}_{\mathbb{F}}, \partial_{\mathcal{A}}) \rightarrow (\mathbb{F}[H_1(L, \mathbb{Z})] \otimes \mathcal{B}_{\mathbb{F}}, \partial_{\mathcal{B}})$

be a unital DGA morphism. The existence of an augmentation of $(\mathcal{B}_{\mathbb{F}}, \partial_{\mathcal{B}}^\rho)$ implies the existence of an augmentation of $(\mathcal{A}_{\mathbb{F}}, \partial_{\mathcal{A}}^\rho)$.

Proof Augmentations pull back with unital DGA morphisms. The proposition follows from the fact that the induced map

$$\rho\Phi: (\mathcal{A}_{\mathbb{F}}, \partial_{\mathcal{A}}^\rho) \rightarrow (\mathcal{B}_{\mathbb{F}}, \partial_{\mathcal{B}}^\rho)$$

is a unital DGA morphism:

$$\rho\Phi\partial_{\mathcal{A}}^\rho = \rho\Phi\rho\partial_{\mathcal{A}} = \rho\Phi\partial_{\mathcal{A}} = \rho\partial_{\mathcal{B}}\Phi = \rho\partial_{\mathcal{B}}\rho\Phi = \partial_{\mathcal{B}}^\rho\rho\Phi. \quad \square$$

In particular, since stable tame isomorphic DGAs are chain homotopic, we have the following corollary.

Corollary 2.5 The isomorphism class of the augmentation variety of the DGA associated to a Legendrian submanifold is invariant under Legendrian isotopy.

2.2 Flow trees

Our computations of the differentials of the Legendrian contact homology DGAs relies on the technique of *gradient flow trees* developed by Ekholm [3]. We restrict ourselves to the case $\dim M = 2$.

Definition 2.6 Given a metric g on M , a *flow tree* on L is a finite tree Γ immersed by $f: \Gamma \rightarrow M$, together with extra data, such that:

- (a) On the interior of an edge e_i , f is an injective parametrization of a flow line of

$$-\nabla(h_i^\alpha - h_i^\beta),$$

where h_i^α and h_i^β are two local functions on M , each defining the z -coordinate of a sheet of L . To the flow line corresponding to e_i we associate its two 1-jet lifts $\phi_i^\alpha, \phi_i^\beta$, parameterised by

$$\phi_i^\alpha(t) = (dh_i^\alpha(e_i(t)), h_i^\alpha(e_i(t))) \in L \subset J^1(M) = T^*M \times \mathbb{R},$$

$$\phi_i^\beta(t) = (dh_i^\beta(e_i(t)), h_i^\beta(e_i(t))) \in L \subset J^1(M) = T^*M \times \mathbb{R},$$

and oriented by $-\nabla(h_i^\alpha - h_i^\beta)$ and $-\nabla(h_i^\beta - h_i^\alpha)$, respectively.

- (b) For every vertex n we fix a cyclic ordering of the edges $\{e_i\}$. We denote the unique 1-jet lift of the i -th edge which is oriented towards (away from) the vertex n by $\phi_i^{\text{in},n}$ ($\phi_i^{\text{out},n}$).
- (c) Consider the curves on $L \subset J^1(M)$ given by the oriented 1-jet lifts of the flow lines. Give the curves a cyclic order by declaring that for every vertex n and edge i , the curve $\phi_i^{\text{in},n}$ is succeeded by $\phi_{i+1}^{\text{out},n}$. We require that the Lagrangian projections of the oriented 1-jet lifts in this order form a closed curve on $\Pi_L(L) \subset T^*(M)$.

If the 1-jet lifts $\phi_i^{\text{in},n}$ and $\phi_{i+1}^{\text{out},n}$ have different z -coordinates at the vertex n , we say that this is a *puncture* at the vertex. The puncture is called *positive* if the oriented curve jumps from a lower to a higher sheet relative the z -coordinate, and is otherwise called *negative*.

We will also define a *partial flow tree* as above, but weakening condition (c) by allowing 1-valent vertices n for which $\Pi_L \circ \phi_i^{\text{in},n}$ and $\Pi_L \circ \phi_i^{\text{out},n}$ differ at n . We call such vertices *special punctures*.

As for punctured holomorphic disks with boundary on $\Pi_L(L)$, an area argument gives the following result.

Lemma 2.7 [3, Lemma 2.13] *Every (partial) flow tree has at least one positive (possibly special) puncture.*

Lemma 2.8 *Suppose that a gradient flow tree has only one positive puncture. If we give each edge e_i the orientation induced by its defining vector field $-\nabla(h_i^\alpha - h_i^\beta)$,*

where we for each edge have ordered the defining functions for the sheets such that $h_i^\alpha - h_i^\beta > 0$, then we obtain a directed tree (in particular, we claim that $h_i^\alpha - h_i^\beta \neq 0$ in the interior of e_i) with the following properties:

- Each vertex has at most one incoming edge.
- For each vertex n different from the one containing the positive puncture, if e_{in} denotes the incoming edge, and $e_{out,1}, \dots, e_{out,m}$ denote the outgoing edges, we have the inequality

$$\sum_{i=1}^m (h_{out,i}^\alpha(n) - h_{out,i}^\beta(n)) \leq h_{in}^\alpha(n) - h_{in}^\beta(n).$$

Proof To see that we get a well-defined directed tree, observe that if $h_i^\alpha - h_i^\beta = 0$ for an interior point of e_i , splitting the tree at this point then produces two partial flow trees, one of which has no positive punctures. This contradicts Lemma 2.7.

To prove the first of the two claims, assume that this is not the case, ie that some vertex have at least two incoming edges. Split the tree somewhere at the incoming edge which is furthest away from the positive puncture. This produces two partial flow trees, one of which has no positive punctures. Again, this leads to a contradiction.

Finally, to prove the last claim, observe that if the inequality

$$\sum_{i=1}^m (h_{out,i}^\alpha(n) - h_{out,i}^\beta(n)) > h_{in}^\alpha(n) - h_{in}^\beta(n)$$

holds at a vertex n , then property (c) above implies that there is a positive puncture at the vertex. □

See [3, Definitions 3.4 and 3.5] for the notion of dimension of a gradient flow tree.

Proposition 2.9 [3, Proposition 3.14] *For a generic perturbation of L and g , the flow trees with at most one positive puncture form a transversely cut out manifold of the expected dimension.*

Observe that since swallowtail singularities have codimension 2, a generic gradient flow tree will not pass through such a singularity. Moreover, the assumption $\dim M = 2$ excludes more complicated singularities of the front projection.

Lemma 3.7 of [3] implies that a generic, rigid, and transversely cut out gradient flow tree has no vertices of valence higher than three, and that each vertex is one of the six types depicted in Figure 2, of which the vertices (P_1) and (P_2) are the possible

punctures. (Note that there exists both positive and negative punctures of type (P_1) and (P_2) .)

The only picture in Figure 2 which is not self explanatory is the one for (S) . Observe that the flow line at an (S) -vertex is tangent to the projection of the cusp edge. We refer to [3, Remark 3.8] for details.

Because of the following result, we may use rigid flow trees to compute the Legendrian Contact Homology.

Theorem 2.10 [3, Theorem 1.1] *For a generic perturbation of L and the metric g on M , there is a regular almost complex structure J on T^*M compatible with the canonical symplectic form, such that there is a bijective correspondence between rigid J -holomorphic disks with one positive puncture having boundary on a perturbation \tilde{L} of L , and rigid flow trees on L with one positive puncture.*

2.3 Generating families

Definition 2.11 A *generating family* for a Legendrian submanifold $L \subset J^1(M)$ is a function $F: M \times E \rightarrow \mathbb{R}$, where E is a smooth manifold, such that

$$L = \left\{ (\mathbf{q}, \mathbf{p}, z) \in J^1(M); 0 = \frac{\partial}{\partial w^i} F(\mathbf{q}, \mathbf{w}), p^i = \frac{\partial}{\partial q^i} F(\mathbf{q}, \mathbf{w}), z = F(\mathbf{q}, \mathbf{w}) \right\}.$$

We think of F as a family of functions $F_m: E \rightarrow \mathbb{R}$ parameterised by M , and require this family to be versal. Since we are considering the case $\dim M = 2$, versality implies that critical points of F_m are isolated, nondegenerate outside a set of codimension 1 of M , possibly of A_2 -type (birth/death type) above a codimension 1 subvariety of M , and possibly of A_3 -type above isolated points of M .

We are interested in the case when E is either a closed manifold or of the form $E = \mathbb{R}^N$. In the latter case we require that F_m is linear and nonzero outside of a compact set for each $m \in M$.

In both cases, the Morse homology of a function F_m in the family is well-defined for generic data. In the case when E is a closed manifold the Morse homology is equal to $H_*(E; \mathbb{Z}_2)$, while it vanishes in the case $E = \mathbb{R}^N$.

The set of generating families for L is invariant under Legendrian isotopy up to stabilization of E by a factor \mathbb{R}^M and adding a nondegenerate quadratic form on \mathbb{R}^M to F_m . (See Pushkar' and Chekanov [14].)

Vertex	Lagrangian projection	Front projection	Flow tree
(P_1)			
(P_2)			
(E)			
(S)			
(Y_0)			
(Y_1)			

Figure 2: (P_1) and (P_2) depict the punctures in the generic case. (E) and (S) depict the vertices corresponding to an *end* and a *switch*, respectively, while (Y_0) and (Y_1) describes the generic 3-valent vertices.

In the case $M = \mathbb{R}$ we have the following result. Consider the function

$$W: M \times \mathbb{R}^N \times \mathbb{R}^N \rightarrow \mathbb{R}, \quad W(m, x, y) = F(m, x) - F(m, y).$$

For sufficiently small $\delta > 0$ we consider the graded vector space

$$\mathcal{GH}_\bullet(F) = H_{\bullet+N+1}(W \geq \delta, W = \delta; \mathbb{Z}_2).$$

In $J^1(\mathbb{R})$ there are connections between generating families and augmentations. For example, we have the following result.

Theorem 2.12 [11, 5.3] *Let F be a generic generating family for a Legendrian knot $L \subset J^1(\mathbb{R})$. Then there exists an augmentation ϵ of the DGA of L which satisfies*

$$\mathcal{GH}_\bullet(F) \simeq \text{HLC}(L; \mathbb{Z}_2, \epsilon).$$

3 The front cone

In this section we describe the behavior of gradient flow trees on a particular Legendrian cylinder in $J^1(\mathbb{R}^2)$. We need this when investigating our Legendrian surfaces, since some of them coincide with this cylinder above open subsets of M in the bundle $J^1(M) \rightarrow M$. We also prove that there is no quadratic at infinity generating family for such a Legendrian surface.

3.1 The front cone and its front generic perturbation

We are interested in the Lagrangian cylinder embedded by

$$S^1 \times \mathbb{R} \rightarrow T^*\mathbb{R}^2 \simeq \mathbb{C}^2, \quad (\theta, r) \mapsto (r + i)(\cos \theta, \sin \theta).$$

Since its Legendrian lift has a front projection given by the double cone

$$(\theta, r) \mapsto (r \cos \theta, r \sin \theta, r)$$

in which all of $S^1 \times \{0\}$ is mapped to a point, it is not front generic. We call this Legendrian cylinder the *front cone*.

To make the cylinder front generic, we perturb it in the following way. Consider the plane with coordinates $\mathbf{q} = (q^1, q^2)$, and an ellipse in this plane parameterised by $\gamma(\theta)$, $\theta \in S^1$. It can be shown that

$$F(\mathbf{q}, \theta) := \|\gamma(\theta) - \mathbf{q}\|$$

is a generating family of a Legendrian cylinder for \mathbf{q} in the domain bounded by the ellipse, given that its semiaxes satisfy $b \leq a < \sqrt{2}b$. When $b < a$, the front projection is generic and has four cusp edges. The projections of these correspond to points in the plane being the envelope of inward normals of the ellipse, where each normal has length equal to the curvature radius at its starting point.

Degenerating the ellipse to a circle, we obtain the Legendrian cylinder corresponding to the front cone. When $b < a < \sqrt{2}b$, this ellipse is thus a generic perturbation of the front cone. Its front is described in Figure 3.

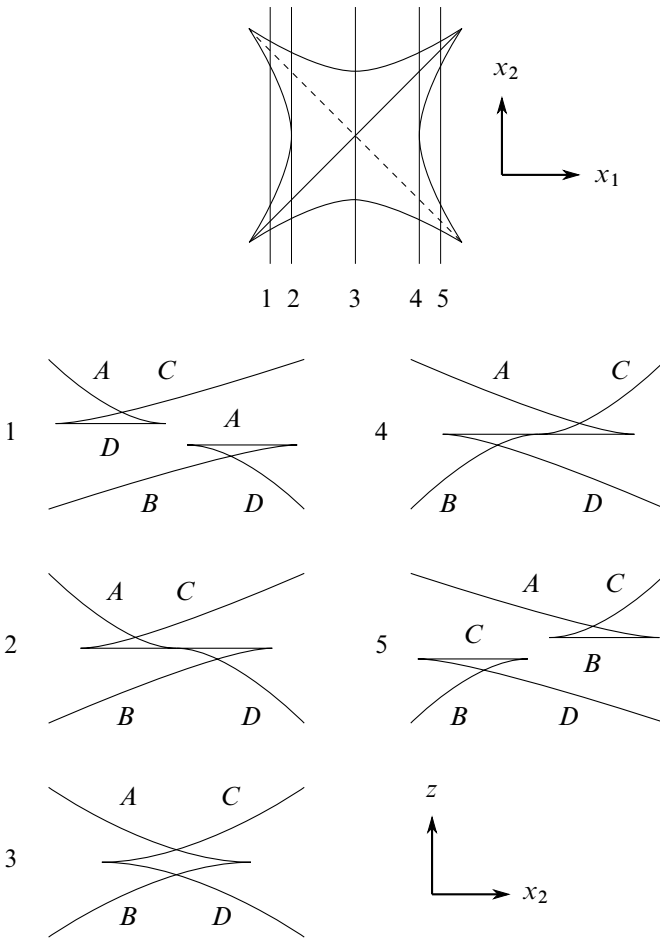


Figure 3: A generic perturbation of the front cone. The top picture depicts the projection of the four cusp edges and the four swallowtail singularities; the bottom picture depicts five slices of the front projection.

3.2 The gradient flow trees near the front cone

The gradient flow outside the region in \mathbb{R}^2 bounded by the projection of the four cusp edges behaves like the gradient flow of the unperturbed cone, ie $-\nabla(h_u - h_l)$ points inwards to the centre, where h_u is the z -coordinate of the upper sheet and h_l is the z -coordinate of the lower sheet.

We now examine the behavior of flow trees on a Legendrian submanifold $L \subset J^1(M)$ which has a front cone above some subset $U \subset M$. More precisely, we assume that after some diffeomorphism of $U \subset M$, L above U coincides with the front cone above an open disk centered at the origin. Moreover, we will assume that the perturbation making the front cone generic is performed in a much smaller disk.

Proposition 3.1 *Let $L \subset J^1(M)$ be a Legendrian submanifold which has a front cone above $U \subset M$, and let T_1, \dots, T_n be finitely many rigid partial gradient flow trees on L with one positive puncture and which live above $M \setminus U$. Let $e_i^1, \dots, e_i^{m_i}$ be the edges of T_i which end at special punctures above ∂U . There is a generic resolution of the front cone with the property that if the edges $e_i^1, \dots, e_i^{m_i}$ for each partial tree T_i is to be continued to produce a rigid gradient flow tree with one positive puncture, then each edge has to be continued in one of the two ways shown in Figure 4.*

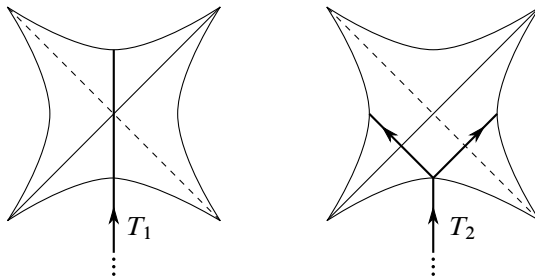


Figure 4: The possibilities for a rigid gradient flow tree with one positive puncture passing through the lower cusp edge. Inside the region bounded by the cusp edges, T_1 is a gradient flow of the height difference of sheets A and B . For T_2 , the top left edge corresponds to the height difference of sheets A and D , while the top right edge corresponds to the height difference of sheets B and C .

Proof Observe that a generic resolution as shown in Figure 3 cannot have the cusp edges being tangent to $-\nabla(h^{\text{top}} - h^{\text{bot}})$ at the swallowtail singularities, where h^{top} and h^{bot} define the z -coordinates of the top and bottom sheet, respectively. A small perturbation out of the degenerate situation produces four such tangencies located

arbitrarily close to each of four the swallowtail singularities. These are the four points on M near the cone where (S) -vertices might occur.

We may however perform the resolution of the front cone in such a way that when continuing each of the edges e_i^j with the flow of $-\nabla(h^{\text{top}} - h^{\text{bot}})$ into the cone region, they all reach the cusp edges of the perturbed front cone at points where the difference $h^{\text{top}} - h^{\text{bot}}$ is strictly less than the absolute value of the difference in z -coordinate where an (S) -vertex may occur.

Hence, by Lemma 2.8, if the completions of the T_i is to have only one positive puncture it must satisfy that:

- Each completion of the edge e_i^j cannot leave the cone region.
- Each completion of the edge e_i^j must have no (S) -vertex.

By dimensional reasons, if the completed gradient flow tree is to be rigid, such a completion may then neither have any (Y_0) -vertex in the cone region.

Thus, since the only possibility of completing the e_i^j are by using (E) and (Y_1) -vertices, we conclude that for each edge there are exactly the two possibilities analogous to the ones shown Figure 4. □

3.3 Generating families for the front cone

Proposition 3.2 *A generating family for the front cone has the property that the Morse homology of a generic function in the family is isomorphic to $H_{\bullet+i}(S^1; \mathbb{Z}_2)$. In particular, the front cone has no generating family with fiber \mathbb{R}^N being linear at infinity. However, it has a generating family with fiber S^1 .*

Proof The dashed diagonal in Figure 3 corresponds to points where the z -coordinate of sheet B is equal to that of sheet D . Above (below) the dashed diagonal the z -coordinate of sheet B is greater (less) than that of sheet D . Similarly, the diagonal orthogonal to it corresponds to points where the z -coordinate of sheet A is equal to that of sheet C . Above (below) that diagonal, the z -coordinate of sheet C is greater (less) than that of sheet A .

Suppose that $F: \mathbb{R}^2 \times E \rightarrow \mathbb{R}$ is a generating family for the front cone. We will use A, B, C and D to denote the critical points of the function F_m in the family, where each critical point has been named after the sheet to which it corresponds. Since the pairs AB, AD, CB, CD all cancel at birth/death singularities at the cusp edges, as seen in Figure 3, we conclude that the critical points are graded by

$$\text{index}(A) = \text{index}(C) = i + 1, \quad \text{index}(B) = \text{index}(D) = i,$$

in the complex $C_{\bullet}(F_m; \mathbb{Z}_2)$, for some $i \geq 0$.

For each complex, consider the pairing

$$\langle \cdot, \cdot \rangle: C_\bullet(F_m; \mathbb{Z}_2) \times C_\bullet(F_m; \mathbb{Z}_2) \rightarrow \mathbb{Z}_2,$$

defined by $\langle P_i, P_j \rangle = \delta_{ij}$ for the basis $\{P_i\}$ of critical points.

Let $c \in \mathbb{R}^2$ denote the intersection point of the two diagonals shown in Figure 3, ie the point where the z -coordinates of sheets A and C coincide as well as those of sheets B and C .

Suppose that $\langle \partial A, B \rangle = 0$ holds for the complex $C_\bullet(F_c; \mathbb{Z}_2)$. Since A and B cancel at a birth/death singularity at the top cusp edge, there must be a handle-slide moment either from A to C or from D to B somewhere in the domain bounded by the top cusp edge and the diagonals. However, for m in this domain, $F_m(A) < F_m(C)$ and $F_m(D) < F_m(B)$, so there can be no such handle slide. By contradiction, we have shown that $\langle \partial A, B \rangle = 1$ must hold for $C_\bullet(F_c; \mathbb{Z}_2)$.

Continuing in this manner, one can show that $C_\bullet(F_c; \mathbb{Z}_2)$ must be the complex defined by $\partial(A) = B + D = \partial(C)$. Since the homology of this complex does not vanish, L has no generating family with fiber $E = \mathbb{R}^N$ being linear at infinity. Assuming that E is closed, we conclude that we must have $E = S^1$. Such a generating family is described in the beginning of this section. □

Remark The front cone also appears twice in the conormal lift of the unknot in \mathbb{R}^3 (see Ekholm and Etnyre [4]). More precisely, let

$$f: S^1 \hookrightarrow \mathbb{R}^3, \quad f(\theta) = (\cos \theta, \sin \theta, 0)$$

be the unknot. Identify S^2 with the unit sphere in \mathbb{R}^3 . The conormal lift of f is the Legendrian torus in $J^1(S^2)$ defined by the generating family

$$F: S^2 \times S^1 \rightarrow \mathbb{R}, \quad F(\mathbf{q}, \theta) = \langle \mathbf{q}, f(\theta) \rangle.$$

It can be seen to have front cones above the north and south pole.

4 Knotted Legendrian surfaces in $J^1(\mathbb{R}^2)$ of genus $g > 0$

4.1 The standard Legendrian handle

Consider the Legendrian cylinder with one saddle-type Reeb chord whose front projection is shown in Figure 5. We will call this the *standard Legendrian handle*. As described in [6], we may attach the handle to a Legendrian surface by gluing its ends to cusp edges in the front projection. This amounts to performing “Legendrian surgery”

in the case when the cusp edges are located on the same connected component, and “Legendrian connected sum” when the cusp edges are located on different connected components.

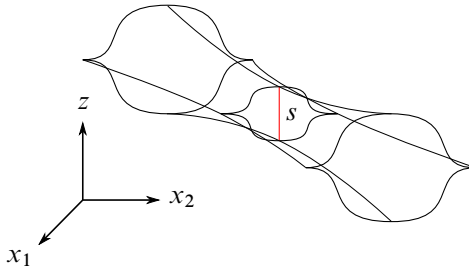


Figure 5: A Legendrian handle with one saddle-type Reeb chord

4.2 Two Legendrian tori in $J^1(\mathbb{R}^2)$

Consider the tori T_{std} and T_{knot} whose fronts are depicted in Figure 6 and 7, respectively. For the rotational-symmetric front there is an S^1 -family of Reeb chords. After

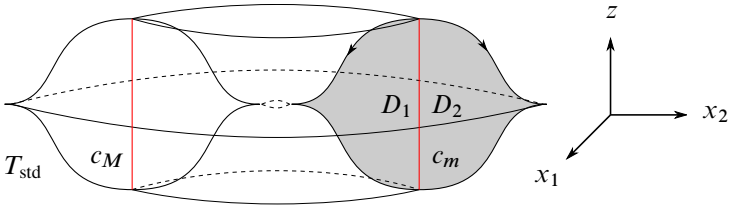


Figure 6: The *standard* rotational-symmetric Legendrian torus T_{std} with the flow trees D_1 and D_2

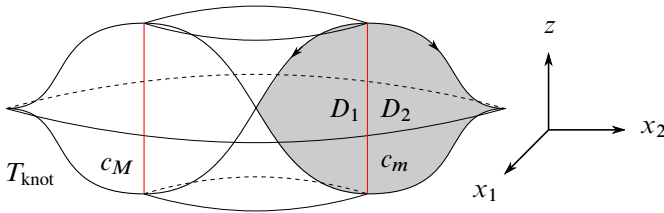


Figure 7: The *knotted* rotational-symmetric Legendrian torus T_{knot} with the partial flow tree D_1 and the flow tree D_2

perturbing the top sheet of the front by adding a Morse function defined on S^1 having exactly two critical points, we obtain two nondegenerate Reeb chords from the circle

of Reeb chords: c_M of maximum type and c_m of saddle type. Using [Formula \(1\)](#), after making the front cone contained in T_{knot} front generic as in [Section 3](#), one sees that the Maslov class vanishes for both tori. Using the h-principle for Legendrian immersions [\[10\]](#) one concludes that T_{std} and T_{knot} are regularly homotopic through Legendrian immersions.

Remark An ambient isotopy of \mathbb{C}^2 inducing a Lagrangian regular homotopy between $\Pi_L T_{\text{std}}$ and $\Pi_L T_{\text{knot}}$ can be constructed as follows. Observe that the rotational-symmetric $\Pi_L T_{\text{std}}$ and $\Pi_L T_{\text{knot}}$ can be seen as the exact immersed Lagrangian counterparts of the Chekanov- and the Clifford torus, respectively. In the Lefschetz fibration $\mathbb{C}^2 \rightarrow \mathbb{C}$ given by $(z, w) \mapsto z^2 + w^2$, with the origin as the only critical value, we get a representation of these tori as the vanishing cycle fibered over a figure-eight curve in the base. More precisely, $\Pi_L(T_{\text{knot}})$ is a figure eight curve in the base encircling the origin, while $\Pi_L(T_{\text{std}})$ is a figure eight curve not encircling the origin. From this picture it is easily seen that $\Pi_L(T_{\text{knot}})$ and $\Pi_L(T_{\text{std}})$ are ambient isotopic through immersed Lagrangians. Namely, we may disjoint the circle in the fiber from the vanishing cycle, and then pass the curve in the base through the critical value.

4.3 The Legendrian genus- g surfaces $L_{g,k}$, with $0 \leq k \leq g$

We construct the Legendrian surface $L_{g,k}$ of genus g by taking the Legendrian direct sum of the standard sphere L_{std} and $g - k$ copies of T_{std} (or equivalently, attaching $g - k$ standard handles to L_{std}) and k copies of T_{knot} . In all cases, we attach one edge of the handle to the unique cusp edge of the sphere, and the other to the outer cusp edge of the tori. The attached knotted tori will be called *knotted handles*.

It is clear that we may cancel the Reeb chord of each standard handle connecting the sphere and the torus, which is a saddle-type Reeb chord, with the maximum-type Reeb chord c_M on the corresponding torus. We have thus created a Legendrian surface having one Reeb chord c coming from the sphere and Reeb chords c_i , for $i = 1, \dots, g$, coming from the saddle-type Reeb chords on the attached tori. Such a representative is shown in [Figure 8](#).

The surfaces $L_{g,0}$ will be called the *standard Legendrian surface of genus g* and they were studied in [\[6\]](#). Observe that T_{std} is Legendrian isotopic to $L_{1,0}$ and T_{knot} is Legendrian isotopic to $L_{1,1}$.

Remark Both $L_{1,0}$ and $L_{1,1}$ have exactly two transverse Reeb chords. This is the minimal number of transverse Reeb chords for a Legendrian torus in $J^1(\mathbb{R}^2)$, as follows by the adjunction formula

$$-\chi(L) + 2W(\Pi_{\mathbb{C}}(L)) = 0,$$

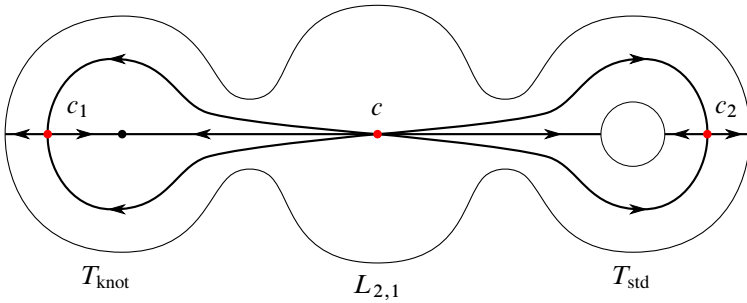


Figure 8: The flow of $-\nabla(f_u - f_l)$, where f_u and f_l are z -coordinates of the upper and lower sheet, respectively, of the surface $L_{2,1} \simeq L_{\text{std}} \# T_{\text{knot}} \# T_{\text{std}}$

where W denotes the Whitney self-intersection index. When L is a torus we get that $W(\Pi_{\mathbb{C}}(L_{1,0})) = 0$ which, together with the fact that there are no exact Lagrangian submanifolds in \mathbb{C}^2 , implies the statement.

More generally, $L_{g,k}$ has $g + 1$ transverse Reeb chords. By a conjecture of Arnold, $g + 1$ is the minimal number of transverse Reeb chords for a closed Legendrian submanifold in $J^1(\mathbb{R}^2)$ of genus g .

4.4 Computation of $HC_{\bullet}(L_{g,k}; \mathbb{Z}[H_1(L; \mathbb{Z})])$

We first choose the following basis $\{\mu_i, \lambda_i\}$ for $H_1(L_{g,k}; \mathbb{Z})$. We let $\mu_i \in H_1(L_{g,k}; \mathbb{Z})$ be the class which is represented by (a perturbation of) the outer cusp edge on the i -th torus in the decomposition

$$L_{g,k} \simeq L_{\text{std}} \# T_{\text{knot}} \# \dots \# T_{\text{knot}} \# T_{\text{std}} \# \dots \# T_{\text{std}}.$$

If the i -th torus is standard, let γ_1 and γ_2 denote the 1-jet lifts of the flow trees on that torus corresponding to D_1 and D_2 shown in Figure 6, respectively. We let λ_i be represented by the cycle $\gamma_1 - \gamma_2$.

If the i -th torus is knotted, D_1 depicted in Figure 7 is a partial flow tree ending near a front cone. We choose to extend it with the partial gradient flow tree T_1 shown in Figure 4 at the perturbed front cone. Again, denoting the 1-jet lifts of $D_1 \cup T_1$ and D_2 by γ_1 and γ_2 , respectively, we let λ_i be represented by the cycle $\gamma_1 - \gamma_2$.

Lemma 4.1 *The surface $L_{g,k}$ has vanishing Maslov class, and the generators of $\mathbb{Z}[H_1(L_{g,k}; \mathbb{Z})] \otimes \mathcal{A}(L)$ can, after an appropriate choice of capping paths, and spin stricture, be made to satisfy*

$$\begin{aligned} |c| &= 2, & \partial c &= 0, \\ |c_i| &= 1, & \partial c_i &= 1 + \lambda_i \end{aligned}$$

if the i -th handle is standard, and

$$|c_i| = 1, \quad \partial c_i = 1 + \lambda_i + \mu_i \lambda_i$$

if the i -th handle is knotted.

Proof Using [Formula \(1\)](#) one easily checks that the Maslov class of $L_{g,k}$ vanishes, since each closed curve on $L_{g,k}$ must traverse the cusp edges in upward and downward direction an equal number of times.

We choose the capping path for c lying on L_{std} (avoiding the handles) and for c_i we take the 1-jet lift of D_2 . Using [Formula \(2\)](#), we compute

$$|c| = 2, \quad |c_i| = 1.$$

After choosing a suitable spin structure on L and orienting the capping operators, we get the following differential on the Reeb chords. For c_i coming from a standard torus, we compute

$$\partial c_i = 1 + \lambda_i,$$

where the two terms come from the gradient flow trees D_2 and D_1 , respectively. For a Reeb chord c_i coming from a knotted torus we get

$$\partial c_i = 1 + \lambda_i + \mu_i \lambda_i,$$

where the first term comes from the gradient flow tree D_2 , and the last two terms come from the partial flow tree D_1 approaching the front cone of the i -th torus. By [Proposition 3.1](#), the edge D_1 can be completed in exactly two ways to become a rigid flow tree with one positive puncture: by adding the partial flow tree T_1 (giving the term λ_i) and by adding the partial flow tree T_2 (giving the term $\mu_i \lambda_i$).

For the Reeb chord c coming from the sphere we get, because of the degrees of the generators, that ∂c is a linear combination of the c_i . The relation $\partial^2 = 0$, together with the fact that the ∂c_i form a linearly independent set, implies that

$$\partial c = 0. \quad \square$$

Remark By changing the spin structure on $L_{g,k}$, we may give each term different from 1 in the differential of a given generator an arbitrary sign.

Remark For the DGA with \mathbb{Z}_2 -coefficients, observe that 1 is in the image of ∂ for $L_{g,k}$ when $k > 0$. Hence $HC_\bullet(L_{g,k}; \mathbb{Z}_2) = 0$ in these cases.

We consider the Legendrian isotopy invariant given by the augmentation variety defined in Section 2.1.6. (In this case, it contains exactly the information given by $HC_0(L_{g,k}; \mathbb{Z}[H_1(L; \mathbb{Z})])$.)

Proposition 4.2 *The augmentation variety for $L_{g,k}$ over \mathbb{C} is isomorphic to*

$$(\mathbb{C} \setminus \{0\})^{g-k} \times (\mathbb{C} \setminus \{1, 0\})^k.$$

Proof After making the identification

$$\mathbb{C}[H_1(L_{g,k}; \mathbb{Z})] \simeq \mathbb{C}[Z_{\lambda_i}, Z_{\lambda_i}^{-1}, Z_{\mu_i}, Z_{\mu_i}^{-1}],$$

the augmentation variety becomes

$$\{1 + Z_{\lambda_i} = 0, k < i \leq g, 1 + Z_{\lambda_j} + Z_{\lambda_j} Z_{\mu_j} = 0, 1 \leq i \leq k\} \subset (\mathbb{C}^*)^{2g},$$

where the handles have been ordered such that the handle corresponding to $\{\lambda_i, \mu_i\}$ is standard precisely when $i > k$. To see this, observe that a DGA having no generators of degree 0 and coefficients in a field is good if and only if the differential vanishes for elements of degree 1. □

Proof of Theorem 1.1 The first part follows immediately from the above proposition, together with Corollary 2.5.

Since $L_{g,k}$ contains k front cones, Proposition 3.2 gives that there does not exist any generating family for $L_{g,k}$ with vanishing Morse homology when $k > 0$. Hence, there can be no generating family for $L_{g,k}$ when $k > 0$, since $L_{g,k} \subset J^1(\mathbb{R}^2)$ is closed and a generating family for it necessarily would have vanishing Morse homology.

It can easily be checked that every $L_{g,0}$ has a linear at infinity generating families with fiber \mathbb{R} , since both the standard Legendrian handle and the standard Legendrian sphere L_{std} have such generating families. □

Remark Theorem 1.1 also implies that the Lagrangian projections $\Pi_L L_{g,k}$ and $\Pi_L L_{g,l}$ never are Hamiltonian isotopic when $k \neq l$, even when their actions coincide.

5 Knotted Lagrangian planes in T^*S^2

We will consider the properly embedded Lagrangian planes F_{2k} being the image of the fiber $T_p^*S^2$ under the composition of $2k$ symplectic Dehn twist along the zero-section of T^*S^2 .

The square of a symplectic Dehn twist along the zero-section can be described by the time- 2π map of the Hamiltonian flow induced by the Hamiltonian

$$H(\mathbf{q}, \mathbf{p}) = \varphi(\|\mathbf{p}\|)\|\mathbf{p}\|,$$

where we have used the round metric, and where φ is a nondecreasing function satisfying $\varphi(t) = 0$ when $|t|$ is small and $\varphi(t) = 1$ when $t > 0$ is large. Outside of a compact set, this flow corresponds to the Reeb flow on the contact boundary $U^*S^2 = \partial(D^*S^2)$ extended to a flow on the symplectization $\mathbb{R} \times U^*S^2 \cong T^*S^2 \setminus 0$ independently of the \mathbb{R} -factor. Consider [15] for a treatment of the symplectic Dehn twist.

Let $q \in S^2$ be a point different from p . We will study the Legendrian link consisting of the Legendrian lift of F_{2k} together with a Legendrian lift of a compactly supported Hamiltonian perturbation of $F := T_q^*S^2$ as shown in Figure 9. By abuse of notation, we will sometimes use F_k and F to denote their respective Legendrian lifts in $J^1(S^2)$. We will choose the Legendrian lift of F so that its z -coordinate is big enough to make all Reeb-chords of $F \cup F_{2k}$ start on F_{2k} .

The front projections of $F_2 \cup F$ and $F_4 \cup F$ are shown in Figures 9 and 10, respectively.

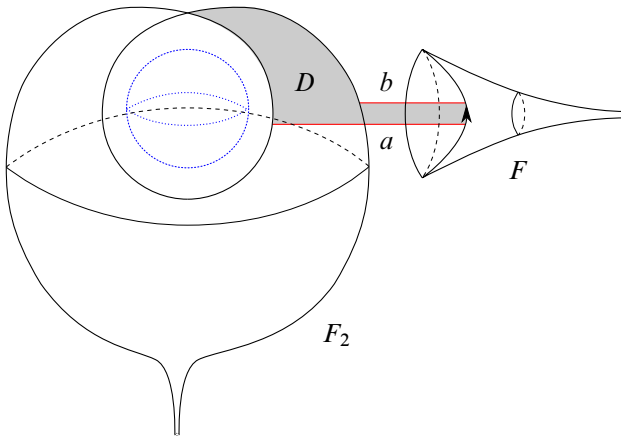


Figure 9: The front projection of a Legendrian lift of $F_2 \cup F$ drawn over S^2 , together with a partial flow tree D . F is the Legendrian lift of a generic perturbation of $T_q^*S^2$. The innermost sphere depicts the zero-section of T^*S^2 .

Since there are no pure Reeb chords, the DGA of the link is good, and since the Maslov class vanishes for both F and F_{2k} , we may grade the DGA over \mathbb{Z} . Even though the Legendrian surfaces involved are noncompact, the Legendrian contact homology

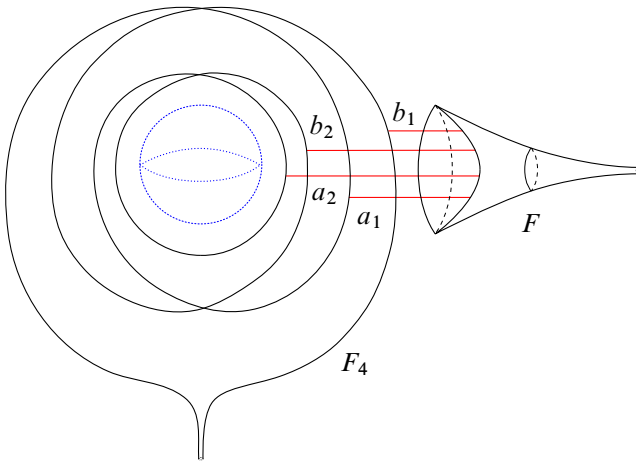


Figure 10: The front projection of a Legendrian lift of $F_4 \cup F$ drawn over S^2

is well-defined since F_{2k} and F are separated by a positive distance outside of a compact set, and it is invariant under compactly supported Legendrian isotopies of F_{2k} . Observe that since $H^1(\mathbb{R}^2; \mathbb{R}) = 0$, and since F_{2k} is a plane, any compactly supported Lagrangian isotopy of F_{2k} lifts to a compactly supported Legendrian isotopy.

The Legendrian link consisting of the lift of $F_{2k} \cup F$, where F is translated far enough in the Reeb direction, has the mixed Reeb-chords $a_1, b_1, \dots, a_k, b_k$, where the Reeb chords have been labelled such that

$$\ell(b_1) < \ell(a_1) < \ell(b_2) < \ell(a_2) < \dots < \ell(b_k) < \ell(a_k).$$

For $F_2 \cup F$ in Figure 9, we have $b_1 = b$ and $a_1 = a$.

Remark The linearized complex for the DGA of the link is the Floer complex $CF_\bullet(F_{2k}, F; \mathbb{Z}_2)$.

Lemma 5.1 For a Legendrian lift of $F_{2k} \cup F$, where the lift of F has been translated so that all Reeb chords start on F_{2k} and end on F , the differential of the corresponding DGA vanishes. Consequently,

$$HLC_\bullet(F_{2k} \cup F; \mathbb{Z}_2) \simeq \bigoplus_{i=1}^k \mathbb{Z}_2 a_i \oplus \mathbb{Z}_2 b_i,$$

where the grading is given by

$$|b_i| = 2i - 1, \quad |a_i| = 2i,$$

and where we have chosen the unique isomorphism class of its linearized homology.

Proof We choose capping paths for each Reeb chord c as follows: We fix a point $w \in F$ close to some Reeb chord endpoint. By $w' \in F_{2k}$ we denote the point on the highest sheet of F_{2k} whose projection to $S^2 \subset J^1(S^2)$ coincides with that of w . A capping path for c will be a path on F starting on the endpoint of c and ending at w , followed by a path on F_{2k} starting on w' and ending on the starting point of c . Using [Formula \(2\)](#) one computes

$$|b_i| = 2(i - 1) + 2 - 1, \quad |a_i| = (2i - 1) + 2 - 1,$$

since the Reeb-chords all are of maximum type, and since one has to pass $2(i - 1)$ (respectively $2i - 1$) front cones in downward direction to go from w' to b_i (respectively from w' to a_i). After perturbing each front cone as in [Section 3](#) to make it front generic, we see that traversing a front cone in downward (upward) direction amounts to traversing one cusp edge in downward (upward) direction.

By comparing indices, we immediately get that

$$\partial_1 b_i = m_{i-1} a_{i-1}, \quad \partial_1 a_i = n_i b_i, \quad m_i, n_i \in \mathbb{Z}_2,$$

and that $\partial b_1 = 0$. We want to show that $m_i = n_i = 0$ for all i . We show the case $\partial a = 0$ for F_2 and note that the general case is analogous.

Consider the front projection of the Legendrian lift of the link shown in [Figure 9](#). We will compute ∂a by counting rigid flow trees. We are interested in flow trees having a positive puncture at a and a negative puncture at b .

Observe that since the puncture at b is negative with a maximum-type Reeb chord, it must be of type (P_2) . This vertex is 2-valent, with one of the edges connected to it being a flow line for the height difference of the lowest sheet of F_2 and a sheet of F , while the other edge is living on F_2 .

Suppose that the first edge does not originate directly from a positive (P_1) puncture at a . Thus, the edge has to end in a (Y_0) -vertex. However, there can be no such vertex on this edge, since this would contradict the rigidity of the flow tree.

The other edge adjacent to the (P_2) vertex is a flow line living on F_2 approaching the front cone. Hence, we are in the situation depicted by the partial front tree D in [Figure 9](#). Applying [Proposition 3.1](#), we conclude that this edge can be completed to a rigid flow tree with one positive puncture in exactly two ways. We have thus computed

$$\partial a = 0. \quad \square$$

Proposition 5.2 *The plane F_{2k} is smoothly isotopic to F_0 by an isotopy having compact support.*

Proof This follows from the fact that the square of a Dehn twist is smoothly isotopic to the identity by a compactly supported isotopy. \square

Proof of Theorem 1.2 Suppose that F_{2k} and F_{2l} are Legendrian isotopic by an isotopy having compact support, where $k, l \geq 0$. After translating F far enough in the z -direction, we get that $F_{2k} \cup F$ is Legendrian isotopic to $F_{2l} \cup F$ by a compactly supported isotopy. Hence,

$$HLC_{\bullet}(F_{2k} \cup F; \mathbb{Z}_2) \simeq HLC_{\bullet}(F_{2l} \cup F; \mathbb{Z}_2)$$

and we get that $k = l$ by the previous lemma.

After applying a Dehn twist, we likewise conclude that if F_{2k+1} and F_{2l+1} , where $k, l \geq 0$, are Legendrian isotopic by an isotopy having compact support, then $k = l$. Observe that F_k and F_l cannot be isotopic when $k \not\equiv l \pmod 2$ because of topological reasons.

Similarly, one may define F_k for $k < 0$ by applying k inverses of Dehn twists. After applying $\min(|k|, |l|)$ Dehn twists to F_k and F_l , the above result gives that F_k and F_l with $k, l \in \mathbb{Z}$ are Legendrian isotopic by a compactly supported isotopy if and only if $k = l$.

The above proposition similarly gives that F_k and F_l are smoothly isotopic by an isotopy having compact support if and only if $k \equiv l \pmod 2$. \square

The above computations are closely related to the result in [15], where the existence of the following exact triangle for Floer homology is proved:

$$\begin{array}{ccc} HF(L_0, L_1) & \longrightarrow & HF(L_0, \tau_L L_1) \\ & \swarrow & \searrow \\ & HF(L_0, L) \otimes HF(L, L_1) & \end{array}$$

Here L_0, L_1 are closed exact Lagrangians in a Liouville domain, L is a Lagrangian sphere and τ is the Dehn twist along L for some choice of an embedding of L . The map \swarrow is given by the pair of pants coproduct composed with the isomorphism $HF(\tau_L L, \tau_L L_1) \simeq HF(L, L_1)$, while \searrow is given by the pair of pants product.

6 A knotted Legendrian sphere in $J^1(S^2)$ which is smoothly ambient isotopic to the unknot

Consider the front over S^2 given in Figure 11. It represents a Legendrian link $L_{\text{knot}} \cup F$, where L_{knot} is a sphere with one maximum type Reeb chord c , having a rotational

symmetric front, and where F is the Legendrian lift of a compactly supported perturbation of a fiber $T_q^*S^2$. The Legendrian lift of the fiber has been chosen so that its z -coordinate is strictly larger than $\max_z L_{\text{knot}}$.

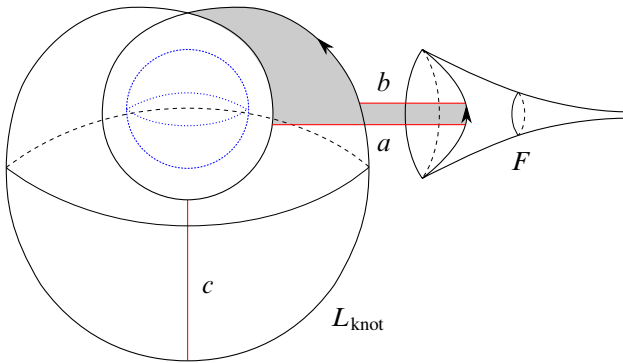


Figure 11: The front projection of $L_{\text{knot}} \cup F$. The innermost sphere depicts the zero-section of T^*S^2 .

Remark The Lagrangian projection $\Pi_L(L_{\text{knot}})$ of the sphere may be seen as the Lagrangian sphere with one transversal double point obtained by performing a Lagrangian surgery to the nondisplaceable Lagrangian torus discovered in [1], exchanging a handle for a transverse double point. More precisely, the torus in T^*S^2 is given by the image of the geodesic flow of a fiber of U^*S^2 . We may lift a neighborhood of the fiber in the torus to a Legendrian submanifold in $J^1(S^2)$. The front projection of this lift looks like the front cone described in Section 3. $\Pi_L(L_{\text{knot}})$ is obtained from the torus by replacing the Lagrangian projection of the front cone with the Lagrangian projection of the two-sheeted front consisting of the graphs of functions on the form

$$f_1(x_1, x_2) = x_1^2 + x_2^2 + C,$$

$$f_2(x_1, x_2) = -x_1^2 - x_2^2 - C,$$

where $C > 0$. This produces the Reeb chord c as shown at the south pole in Figure 11.

Remark One can also obtain L_{knot} by the following construction, which involves a Dehn twist. Consider the standard sphere L_{std} shown in Figure 1, and suppose that $\Pi_L(L_{\text{std}}) \subset T^*D^2 \subset T^*\mathbb{R}^2$. We may symplectically embed $T^*D^2 \subset T^*S^2$ such that the zero-sections coincide. Perturb one of the sheets so that it coincides with a fiber of T^*S^2 in a neighborhood of the double point. Removing a neighborhood of this sheet and replacing it with its image under the square of a Dehn-twist along the zero-section (see Section 5), such that the Dehn twist has support in a small enough neighborhood, yields $\Pi_L L_{\text{knot}}$.

Since L_{knot} has a front cone above the north pole, Proposition 3.2 implies that the fiber of a generating family must be S^1 . However, the following holds.

Proposition 6.1 L_{knot} has no generating family

$$F: S^2 \times S^1 \rightarrow \mathbb{R}.$$

Proof Suppose there is such a generating family. Then

$$\Pi_L L_{\text{knot}} = \pi_{T^*S^2}(dF \cap (T^*S^2 \times 0_{S^1})) \subset T^*S^2,$$

where dF is considered as a section of $T^*S^2 \times T^*S^1$, $\pi_{T^*S^2}$ is the projection onto the T^*S^2 -factor and $0_{S^1} \subset T^*S^1$ is the zero-section. Hence

$$\Pi_L L_{\text{knot}} \cap 0_{S^2} = \pi_{T^*S^2}(dF \cap (0_{S^2} \times 0_{S^1})),$$

which by the Morse inequalities consists of at least four points when the intersection is transversal. However, one sees that L_{knot} intersects the zero-section transversely in only two points, which leads to a contradiction. \square

Remark L_{knot} can be seen to have a generating family defined on an S^1 -bundle over S^2 having Euler number 1.

Proposition 6.2 $\Pi_L(L_{\text{knot}})$ and $\Pi_L(L_{\text{std}})$ are smoothly ambient isotopic.

Proof Consider L_{knot} given by the rotation symmetric front in Figure 11. We assume that the Reeb chord c is above the south pole and that the front cone is above the north pole. We endow S^2 with the round metric.

The goal is to produce a filling of L_{knot} by an embedded S^1 -family of disks in T^*S^2 with corners at c . More precisely, we want a map

$$\varphi: S^1 \times D^2 \rightarrow T^*S^2,$$

such that:

- φ is a diffeomorphism on the complement of $S^1 \times \{1\}$.
- $\varphi^{-1}(c) = S^1 \times \{1\}$.
- $\varphi|_{S^1 \times \partial D^2}$ is a foliation of $\Pi_L(L_{\text{knot}})$ by embedded paths starting and ending at the double point.
- On a neighborhood $U \supset S^1 \times \{1\}$, $\varphi|_{(\{\theta\} \times D^2) \cap U}$ maps into the plane given by $(s, t) \mapsto t\dot{\gamma}_\theta(s) \in T_{\gamma_\theta(s)}S^2 \simeq T_{\gamma_\theta(s)}^*S^2$ (identified using the round metric), where γ_θ is a geodesic on S^2 starting at the south pole with angle θ .

The existence of such a filling by disks will prove the claim, since an isotopy then may be taken as a contraction of $\Pi_L(L_{\text{knot}})$ within the disks to a standard sphere contained in the neighborhood of $S^1 \times \{1\}$. To that end, observe that such a neighborhood contains a standard sphere intersecting each plane $(s, t) \mapsto t\dot{\gamma}_\theta(s) \in T_{\gamma_\theta(s)}S^2$ in a figure eight curve, with the double point coinciding with that of L_{knot} .

We begin by considering the S^1 -family $\{\tilde{D}_\theta\}$ of embedded disks with boundary on $\Pi_L(L_{\text{knot}})$ and two corners at c , such that \tilde{D}_θ is contained in the annulus

$$\{t\dot{\gamma}_\theta(s) \in T_{\gamma_\theta(s)}S^2 \simeq T_{\gamma_\theta(s)}^*S^2; t \in \mathbb{R}, 0 \leq s < 2\pi\},$$

and where γ_θ is the geodesic described above. (In some complex structure, these disks may be considered as pseudoholomorphic disks with two positive punctures at c , or alternatively, gradient flow trees on L_{knot} with two positive punctures.)

Let $R_\theta: \mathbb{C}^2 \rightarrow \mathbb{C}^2$ be the complexified rotation of \mathbb{R}^2 by angle θ . We can take a chart near the north pole of T^*S^2 which is symplectomorphic to a neighborhood of the origin in $\mathbb{C}^2 \simeq T^*\mathbb{R}^2$ such that:

- The image of L_{knot} in the chart is invariant under R_θ .
- The disk in the above family corresponding to the geodesic γ_θ is contained in the plane $R_\theta(z, 0)$.

The image of L_{knot} in such a chart is shown in [Figure 12](#).

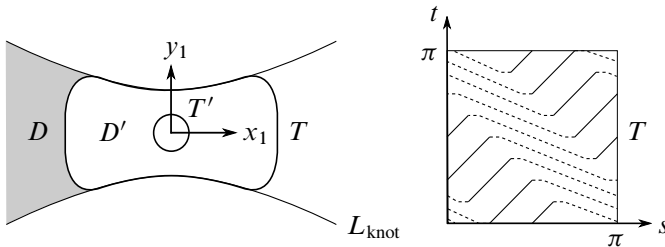


Figure 12: A neighborhood of the north pole of T^*S^2 identified as a subset of \mathbb{C}^2 where L_{knot} and T are invariant under R_θ . The curves $(R_\theta D) \cap T$ can be completed to a foliation of T by closed curves as shown on the right.

The torus T invariant under R_θ shown in [Figure 12](#) is symplectomorphic to a Clifford torus $S^1 \times S^1 \subset \mathbb{C}^2$. It can be parameterised by

$$f: \mathbb{R}/\pi\mathbb{Z} \times \mathbb{R}/\pi\mathbb{Z} \rightarrow \mathbb{C}^2, \\ (s, t) \mapsto f(s, t) = \gamma(s+t)(\cos(s-t), \sin(s-t)),$$

where $\gamma: \mathbb{R}/2\pi\mathbb{Z} \rightarrow \mathbb{C}$ is a parametrization of $T \cap (\mathbb{C} \times \{0\})$ satisfying $\gamma(s+\pi) = -\gamma(s)$.

We now cut the disks in the family $\{\tilde{D}_\theta\}$ along T . For each \tilde{D}_θ we obtain three disks: D_θ coinciding with $R_\theta D$ in Figure 12, $-D_\theta$ coinciding with $R_{\theta+\pi} D$, and $R_\theta D'$.

Observe that $\{D_\theta\}$ is an S^1 -family of embedded disks which has the right behaviour near the double-point of $\Pi_L(L_{\text{knot}})$. However, each disk in the family has a boundary arc $(R_\theta D) \cap T$ which is not on $\Pi_L(L_{\text{knot}})$. We will produce our filling φ by gluing another family of embedded disks along these arcs.

As shown in Figure 12, each arc $(R_\theta D) \cap T$ can be extended by a curve inside $T \cap \Pi_L(L_{\text{knot}})$ to become a unique leaf in a foliation of T by closed curves. This foliation extends to a filling of T by an embedded S^1 -family of disks whose interiors are disjoint from $\Pi_L(L_{\text{knot}}) \cup \bigcup_{\theta \in S^1} D_\theta$. Gluing these disks to the disks in $\{D_\theta\}$ will produce the required filling φ .

To see the filling of T one can argue as follows. The foliation of T is isotopic to a foliation where all leaves are of the form $t \equiv C$. Using this isotopy, we may create a family of annuli with one boundary component being a leaf in the foliation of T , and the other boundary component being the curve $e^{i(s+C)}(\cos(s-C), \sin(s-C))$ for some C and $\epsilon > 0$. The latter curve is a leaf of a foliation of the torus parameterised by $e^{i(s+t)}(\cos(s-t), \sin(s-t))$. The smaller torus, which is depicted by T' in Figure 12, is clearly isotopic to T by an isotopy preserving each $R_\theta D'$. Finally, the leaf in the foliation on T' corresponding to $t \equiv C$ is bounded by a disk contained in the plane

$$\left(z + \frac{\epsilon}{2} e^{i2C}, -iz - \frac{\epsilon}{2i} e^{i2C} \right), \quad z \in \mathbb{C}. \quad \square$$

We will now compute the linearized Legendrian contact homology of the link $L_{\text{knot}} \cup F$ with coefficients in \mathbb{Z}_2 . Observe that the DGA of each component is good since, as we shall see, the differential vanishes. Observe that even though F is not compact, the Legendrian contact homology is still well-defined under Legendrian isotopy of the component L_{knot} .

Lemma 6.3 *The differential vanishes on all generators of the DGA for the link $L_{\text{knot}} \cup F$, and hence*

$$HLC_\bullet(L_{\text{knot}} \cup F; \mathbb{Z}_2) \simeq \mathbb{Z}_2 c \oplus \mathbb{Z}_2 a \oplus \mathbb{Z}_2 b,$$

where we have chosen the unique isomorphism class of its linearized homology.

Proof Since both components have zero Maslov number, we may consider DGAs graded over \mathbb{Z} .

Formula (2) gives $|c| = 2$. We may assume that $\ell(c) < \min(\ell(a), \ell(b))$. Thus, by the area Formula (3), we immediately compute $\partial(c) = 0$ for the only pure Reeb chord.

Hence there is an unique augmentation of the DGA for each component, namely the trivial one.

For the Reeb chords a and b , we grade them as in the proof of [Lemma 5.1](#), ie $|a| = 2$, $|b| = 1$. The same proof carries over to give $\partial a = \partial b = 0$. \square

Remark The above lemma shows that the subspace of $HLC_{\bullet}(L_{\text{knot}} \cup F; \mathbb{Z}_2)$ spanned by the mixed chords is isomorphic to $H_{\bullet+1}(S^1; \mathbb{Z}_2)$. This graded vector space is, in turn, isomorphic to the Morse homology of a generic function in the generating family considered above (with shifted degrees).

Corollary 6.4 *For every isotopy class of L_{knot} , its link with F has a mixed Reeb chord.*

Proof If L_{knot} and F could be unlinked, ie if L_{knot} could be isotoped so that the link carries no mixed Reeb chords, then we would have

$$HLC_{\bullet}(L_{\text{knot}} \cup F; \mathbb{Z}_2) \simeq HLC_{\bullet}(L_{\text{knot}}; \mathbb{Z}_2) \oplus HLC_{\bullet}(F; \mathbb{Z}_2) \simeq \mathbb{Z}_2 c,$$

where we again have chosen the unique (trivial) augmentations. This leads to a contradiction. \square

Proof of Theorem 1.3 Suppose that L_{knot} is Legendrian isotopic to L_{std} . It would then be possible to unlink L_{knot} and F , contradicting the previous corollary.

We now show that $\Pi_L(L_{\text{knot}}) \subset D^*S^2 \subset S^2 \times S^2$, where D^*S^2 denotes the unit disk bundle, cannot be Hamiltonian isotoped to $\Pi_L(L_{\text{std}})$ inside $S^2 \times S^2$. We use the fact that the torus considered in [\[1\]](#), and fiber-wise rescalings of it, are nondisplaceable in $S^2 \times S^2$, as is shown in [\[12\]](#). After Hamiltonian isotopy, such a torus can be placed in an arbitrarily small neighborhood of $\Pi_L(L_{\text{knot}})$.

A Hamiltonian isotopy of $S^2 \times S^2$ mapping $\Pi_L(L_{\text{knot}})$ to a small Darboux chart, would do the same with a nondisplaceable torus sufficiently close to it, which leads to a contradiction. \square

References

- [1] **P Albers, U Frauenfelder**, *A nondisplaceable Lagrangian torus in T^*S^2* , Comm. Pure Appl. Math. 61 (2008) 1046–1051 [MR2417887](#)
- [2] **Y Chekanov**, *Differential algebra of Legendrian links*, Invent. Math. 150 (2002) 441–483 [MR1946550](#)

- [3] **T Ekholm**, *Morse flow trees and Legendrian contact homology in 1–jet spaces*, *Geom. Topol.* 11 (2007) 1083–1224 [MR2326943](#)
- [4] **T Ekholm**, **J B Etnyre**, *Invariants of knots, embeddings and immersions via contact geometry*, from: “Geometry and topology of manifolds”, (H U Boden, I Hambleton, A J Nicas, B D Park, editors), *Fields Inst. Commun.* 47, Amer. Math. Soc. (2005) 77–96 [MR2189927](#)
- [5] **T Ekholm**, **J Etnyre**, **M Sullivan**, *The contact homology of Legendrian submanifolds in \mathbb{R}^{2n+1}* , *J. Differential Geom.* 71 (2005) 177–305 [MR2197142](#)
- [6] **T Ekholm**, **J Etnyre**, **M Sullivan**, *Non-isotopic Legendrian submanifolds in \mathbb{R}^{2n+1}* , *J. Differential Geom.* 71 (2005) 85–128 [MR2191769](#)
- [7] **T Ekholm**, **J Etnyre**, **M Sullivan**, *Orientations in Legendrian contact homology and exact Lagrangian immersions*, *Int. J. Math.* 16 (2005) 453–532 [MR2141318](#)
- [8] **T Ekholm**, **J Etnyre**, **M Sullivan**, *Legendrian contact homology in $P \times \mathbb{R}$* , *Trans. Amer. Math. Soc.* 359 (2007) 3301–3335 [MR2299457](#)
- [9] **Y Eliashberg**, **A Givental**, **H Hofer**, *Introduction to symplectic field theory*, from: “GAFA 2000 (Tel Aviv, 1999)”, (N Alon, J Bourgain, A Connes, M Gromov, V Milman, editors), *Geom. Funct. Anal. Special Volume, Part II* (2000) 560–673 [MR1826267](#)
- [10] **Y Eliashberg**, **N Mishachev**, *Introduction to the h –principle*, *Graduate Studies in Math.* 48, Amer. Math. Soc. (2002) [MR1909245](#)
- [11] **D Fuchs**, **D Rutherford**, *Generating families and Legendrian contact homology in the standard contact space* [arXiv:0807.4277](#)
- [12] **K Fukaya**, **Y G Oh**, **H Ohta**, **K Ono**, *Toric degeneration and non-displaceable Lagrangian tori in $S^2 \times S^2$* , to appear in *Int. Math. Res. Not.* [arXiv:1002.1660](#)
- [13] **L Ng**, *Framed knot contact homology*, *Duke Math. J.* 141 (2008) 365–406 [MR2376818](#)
- [14] **P E Pushkar’**, **Y V Chekanov**, *Combinatorics of fronts of Legendrian links, and Arnol’ d’s 4–conjectures*, *Uspekhi Mat. Nauk* 60 (2005) 99–154 [MR2145660](#)
- [15] **P Seidel**, *A long exact sequence for symplectic Floer cohomology*, *Topology* 42 (2003) 1003–1063 [MR1978046](#)

Department of mathematics, Uppsala University

Box 480, 751 06 Uppsala, Sweden

georgios@math.uu.se

Received: 4 February 2011

Revised: 23 June 2011