

AG
T

*Algebraic & Geometric
Topology*

Volume 25 (2025)

A diagrammatic computation of abelian link invariants

DAVID CIMASONI

LIVIO FERRETTI

JESSICA LIU



A diagrammatic computation of abelian link invariants

DAVID CIMASONI

LIVIO FERRETTI

JESSICA LIU

We show how the multivariable signature and Alexander polynomial of a colored link can be computed from a single symmetric matrix naturally defined from a colored link diagram. In the case of a single variable, it coincides with the matrix introduced by Kashaev (2021), which was recently proven to compute the Levine–Tristram signature and the Alexander polynomial of oriented links (see Liu, 2023 and Cimasoni and Ferretti, 2024). As a corollary, we obtain a multivariable extension of Kauffman’s (1983) determinantal model of the Alexander polynomial, recovering a result of Zibrowius (2017).

57K10

1 Introduction

As its title suggests, the aim of the present article is to give a way of computing several classical link invariants directly from a diagram. Before specifying these invariants, let us mention that this story is best told in the context of *colored links*, that we now recall.

Given an integer $\mu > 0$, a μ -colored link is an oriented link $L \subset S^3$ each of whose components is endowed with a *color* in $\{1, \dots, \mu\}$ in such a way that all these colors are used. Two colored links are isotopic if they are related by an ambient isotopy which respects the orientation and color of all components. Clearly, a 1-colored link is just an oriented link, while a μ -component μ -colored link is an oriented ordered link. A μ -colored link can be described by an oriented link diagram D with colored components, an object which we will refer to as a μ -colored diagram (see Figure 1 for an example). As usual, a crossing v of D is naturally endowed with a sign that we denote by $\text{sgn } v = \pm 1$; see Figure 1. Finally, a crossing will be called *monochromatic* if the two corresponding strands are of the same color, and *bichromatic* otherwise.

The invariants we are interested in computing are the classical abelian invariants of a μ -colored link L , namely its multivariable *signature* and *nullity* $\sigma_L, \eta_L : (S^1 \setminus \{1\})^\mu \rightarrow \mathbb{Z}$, and its multivariable *Alexander polynomial* Δ_L in the normalized form given by the *Conway function* ∇_L . In the case $\mu = 1$, these are the well-known *Levine–Tristram signature* and *nullity* and *Alexander–Conway polynomial*, without doubt among the most studied of link invariants. We refer to Section 2 for the definition of these classical objects.

As our main result will show, these invariants can all be computed from a single symmetric matrix $\tau_D(x)$, whose coefficients are functions of formal variables $x = \{x_j, x_{jk} \mid 1 \leq j, k \leq \mu\}$ indexed by (unordered pairs of) colors. We now give its definition.

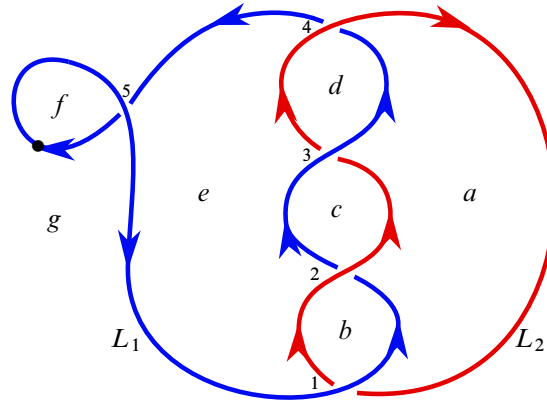


Figure 1: A 2-colored diagram D for a 2-colored link $L = L_1 \cup L_2$. The crossings are labeled 1 through 5 and the regions are labeled a through g . Crossings 1 to 4 are positive and bichromatic, while crossing 5 is negative and monochromatic. The marked point on L_1 will serve a further purpose.

Definition 1.1 Given a μ -colored diagram D , let $\tau_D(x)$ be the symmetric matrix with rows and columns indexed by the regions of D defined by

$$\tau_D(x) = \sum_v \frac{\text{sgn } v}{\sqrt{1-x_j^2}\sqrt{1-x_k^2}} \tau_v(x),$$

where the sum is over all crossings of D , the indices $j, k \in \{1, \dots, \mu\}$ are the (possibly identical) colors of the two strands crossing at v , and the only nonvanishing coefficients of the matrix $\tau_v(x)$ are given in Figure 2.

Also, we shall denote by $\tilde{\tau}_D(x)$ the matrix obtained by removing the two rows and columns corresponding to two adjacent regions of D determined by a marked point on D . We will assume without loss of generality that this point is on a strand of color 1.

Note that if the regions a, b, c, d around a crossing v are not all distinct, then one should add the corresponding rows and columns of $\tau_v(x)$. This happens in the following example.

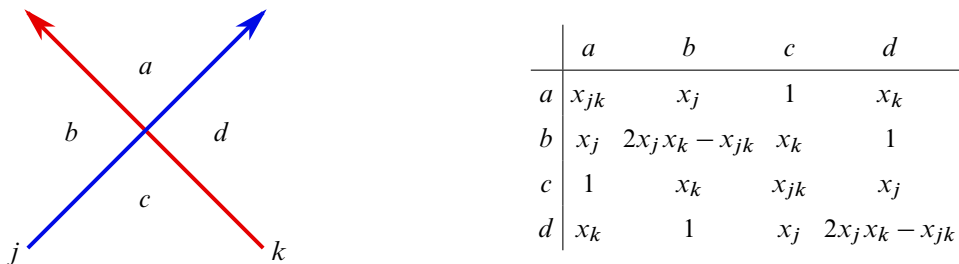


Figure 2: A crossing v together with the corresponding 4×4 minor of $\tau_v(x)$. The incoming left strand is of color j , the incoming right strand of color k , and the four adjacent regions are a, b, c , and d .

Example 1.2 Consider the 2-colored diagram D illustrated in Figure 1. Ordering the regions alphabetically, the corresponding matrix is given by

$$\tau_D(x) = \frac{1}{\sqrt{1-x_1^2}\sqrt{1-x_2^2}} \begin{bmatrix} 4(2x_1x_2 - x_{12}) & 2x_2 & 2x_1 & 2x_2 & 4 & 0 & 2x_1 \\ 2x_2 & 2x_{12} & 1 & 0 & 2x_1 & 0 & 1 \\ 2x_1 & 1 & 2x_{12} & 1 & 2x_2 & 0 & 0 \\ 2x_2 & 0 & 1 & 2x_{12} & 2x_1 & 0 & 1 \\ 4 & 2x_1 & 2x_2 & 2x_1 & 4(2x_1x_2 - x_{12}) & 0 & 2x_2 \\ 0 & 0 & 0 & 0 & 0 & 0 & 0 \\ 2x_1 & 1 & 0 & 1 & 2x_2 & 0 & 2x_{12} \end{bmatrix} - \frac{1}{1-x_1^2} \begin{bmatrix} 0 & 0 & 0 & 0 & 0 & 0 & 0 \\ 0 & 0 & 0 & 0 & 0 & 0 & 0 \\ 0 & 0 & 0 & 0 & 0 & 0 & 0 \\ 0 & 0 & 0 & 0 & 0 & 0 & 0 \\ 0 & 0 & 0 & 0 & 2x_1^2 - x_{11} & 1 & 2x_1 \\ 0 & 0 & 0 & 0 & 1 & 2x_1^2 - x_{11} & 2x_1 \\ 0 & 0 & 0 & 0 & 2x_1 & 2x_1 & 2x_{11} + 2 \end{bmatrix},$$

where the first summand contains the contributions from the four (positive) bichromatic crossings and the second summand is the contribution from the (negative) monochromatic crossing.

Here is our main result.

Theorem 1.3 Let D be an arbitrary μ -colored diagram for a μ -colored link L .

(i) For any $\omega = (\omega_1, \dots, \omega_\mu) \in (S^1 \setminus \{1\})^\mu$, the signature and nullity of L are given by

$$\sigma_L(\omega) = \frac{1}{2}(\text{sign } \tilde{\tau}_D(\omega) - w_m(D)) \quad \text{and} \quad \eta_L(\omega) = \frac{1}{2} \text{null } \tilde{\tau}_D(\omega),$$

where $w_m(D)$ is the sum of the signs of all monochromatic crossings of D , and $\tau_D(\omega)$ stands for the evaluation of $\tau_D(x)$ at

$$x_j = \text{Re}(\omega_j^{1/2}), \quad x_{jk} = \text{Re}(\omega_j^{1/2}\omega_k^{1/2}).$$

(ii) If D is connected, then the Conway function of L satisfies

$$\nabla_L^2(t_1, \dots, t_\mu) = \frac{1}{(t_1 - t_1^{-1})^2} \left(\prod_v (-\text{sgn } v) \left(\frac{1}{2}(t_j - t_j^{-1}) \right) \left(\frac{1}{2}(t_k - t_k^{-1}) \right) \right) \cdot \det \tilde{\tau}_D(t^2),$$

where the product is over all crossings of D , the indices j, k are the (possibly identical) colors of the two strands crossing at v , and $\tau_D(t^2)$ stands for the evaluation of $\tau_D(x)$ at

$$x_j = \frac{1}{2}(t_j + t_j^{-1}), \quad x_{jk} = \frac{1}{2}(t_j t_k + t_j^{-1} t_k^{-1}).$$

Several remarks are in order.

Remarks (i) We need to fix one square root of each coordinate $\omega_j \in S^1 \setminus \{1\}$ of ω . Our choice is to take $\omega_j = e^{i\theta_j}$ with $\theta_j \in (0, 2\pi)$, and $\omega_j^{1/2} = e^{i\theta_j/2}$. In other words, $\omega_j^{1/2}$ denotes the unique square root such that $\text{Im}(\omega_j^{1/2})$ lies in $(0, 1]$. In particular, we have $(\bar{\omega}_j)^{1/2} = -(\omega_j^{1/2})$, and $\sqrt{1-x_j^2} = \text{Im}(\omega_j^{1/2})$. Note that $x_j^2 \neq 1$, so $\tau_D(\omega)$ is a well-defined symmetric *real* matrix.

(ii) When defining $\tau_D(t^2)$ in the second point of Theorem 1.3, we need to explain how we evaluate $\sqrt{1-x_j^2}$, since there is a sign ambiguity: we set $\sqrt{1-x_j^2} = \frac{1}{2i}(t_j^{-1} - t_j)$. (See also Note 3.2.)

(iii) In both points of Theorem 1.3, the evaluations of the formal variables satisfy $x_{jj} = 2x_j^2 - 1$ for all j . Therefore, if a crossing v is monochromatic, then the matrix $\tau_v(x)$ can be written in a simple form which only depends on the single variable x_j .

(iv) In particular, if $\mu = 1$, then $\tau_D(x)$ depends on a single variable. This matrix was first introduced by Kashaev in [13]; see discussion below.

(v) In principle, it would be enough to only define the matrix $\tau_D(t^2)$ to state and prove Theorem 1.3. The reason we chose to introduce the matrix $\tau_D(x)$ is merely historical: in doing so, we explicitly present our results as an extension of Kashaev’s work.

(vi) In [13], Kashaev studied the effect of Reidemeister moves on the matrix $\tau_D(x)$ in the single-variable case, proving that a certain *modified S-equivalence* class of the matrix is a link invariant. We expect a similar result to hold in the multivariable setting.

(vii) As it will become apparent from the proof of the second point, our construction naturally produces the square of the Conway function, so we cannot hope to recover its sign. (See also Note 1.6.)

Example 1.4 Consider once again the 2-colored link illustrated in Figure 1. From the corresponding matrix $\tau_D(x)$ given in Example 1.2, we compute

$$\tilde{\tau}_D(t^2) = \frac{-4}{(t_1 - t_1^{-1})(t_2 - t_2^{-1})} \times \begin{bmatrix} 2(t_1 t_2^{-1} + t_1^{-1} t_2) & t_2 + t_2^{-1} & t_1 + t_1^{-1} & t_2 + t_2^{-1} & 4 \\ t_2 + t_2^{-1} & t_1 t_2 + t_1^{-1} t_2^{-1} & 1 & 0 & t_1 + t_1^{-1} \\ t_1 + t_1^{-1} & 1 & t_1 t_2 + t_1^{-1} t_2^{-1} & 1 & t_2 + t_2^{-1} \\ t_2 + t_2^{-1} & 0 & 1 & t_1 t_2 + t_1^{-1} t_2^{-1} & t_1 + t_1^{-1} \\ 4 & t_1 + t_1^{-1} & t_2 + t_2^{-1} & t_1 + t_1^{-1} & 2(t_1 t_2^{-1} + t_1^{-1} t_2) - \frac{t_2 - t_2^{-1}}{t_1 - t_1^{-1}} \end{bmatrix},$$

and obtain

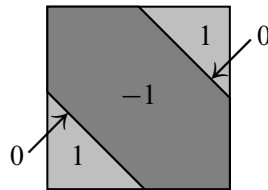
$$\det \tilde{\tau}_D(t^2) = - \left(\frac{-4}{(t_1 - t_1^{-1})(t_2 - t_2^{-1})} \right)^5 (t_1 - t_1^{-1})(t_2 - t_2^{-1})(t_1 t_2 + t_1^{-1} t_2^{-1})^2.$$

To compute $\text{sign } \tilde{\tau}_D(\omega)$, we evaluate $\tilde{\tau}_D(t^2)$ at $t_i = \omega_i^{1/2}$, and recall that the signature can change value only when the nullity changes value. Since $\text{Im}(\omega_j^{1/2}) \in (0, 1]$, the computation of the determinant immediately implies that the nullity of $\tilde{\tau}_D(\omega)$ vanishes on the complement of $\Sigma := \{(\omega_1, \omega_2) \in (S^1 \setminus \{1\})^2 \mid \omega_1 \omega_2 = -1\}$,

so its signature is constant on the connected components of this complement. Then, an easy but tedious computation of minors shows that the nullity of $\tilde{\tau}_D(\omega)$ is constant equal to 2 on Σ , so the signature is also constant along each component of Σ . In particular, Theorem 1.3 implies that $\eta_L(\omega) = 1$ if $\omega_1\omega_2 = -1$, and $\eta_L(\omega) = 0$ otherwise. As for the signature, the values of $\text{sign } \tilde{\tau}_D(\omega)$ can now be computed by picking one point in each of those connected components. For example, taking $\omega_1 = \omega_2 = -1$ we obtain

$$\tilde{\tau}_D(\omega) = \begin{bmatrix} 4 & 0 & 0 & 0 & 4 \\ 0 & -2 & 1 & 0 & 0 \\ 0 & 1 & -2 & 1 & 0 \\ 0 & 0 & 1 & -2 & 0 \\ 4 & 0 & 0 & 0 & 3 \end{bmatrix},$$

from which we compute $\text{sign } \tilde{\tau}_D(\omega) = -3$ and hence, by Theorem 1.3, $\sigma_L(\omega) = -1$. The other values of σ_L can be computed in a similar way. The result can be summarized in the formula $\sigma_L(\omega_1, \omega_2) = -\text{sign}(\text{Re}((1 - \omega_1)(1 - \omega_2)))$, and is plotted below, where the domain $(S^1 \setminus \{1\})^2$ is shown as a square:



Finally, we also get $\pm \nabla_L(t_1, t_2) = t_1 t_2 + t_1^{-1} t_2^{-1}$.

The first point of this theorem provides a practical new way of computing multivariable signatures, but it also yields much simpler proofs of known properties of this invariant. For example, consider the following situation: let L be the $(\mu - 1)$ -colored link obtained from a μ -colored link L' by identifying the colors $\mu - 1$ and μ ; then, for all $(\omega_1, \dots, \omega_{\mu-1}) \in (S^1 \setminus \{1\})^{\mu-1}$, we have the equality

$$\sigma_L(\omega_1, \dots, \omega_{\mu-1}) = \sigma_{L'}(\omega_1, \dots, \omega_{\mu-1}, \omega_{\mu-1}) - \sum \text{lk}(K_{\mu-1}, K_{\mu}),$$

the sum being over all components $K_{\mu-1} \subset L$ of color $\mu - 1$ and all components $K_{\mu} \subset L$ of color μ . The original proof of this fact is rather tedious; see [4, Proposition 2.5]. It is an amusing exercise to check that this fact immediately follows from Theorem 1.3. In particular, given a μ -component μ -colored link $L' = K_1 \cup \dots \cup K_{\mu}$, the underlying 1-colored link L satisfies the equality

$$\xi(L) := \sigma_L(-1) + \sum_{i < j} \text{lk}(K_i, K_j) = \sigma_{L'}(-1, \dots, -1).$$

This, together with the straightforward [4, Proposition 2.8], yields a one line proof of the main result of [17]: the integer $\xi(L)$ does not depend on the orientation of the components of L .

The second point of this theorem implies a corollary that we now present. Given a connected colored diagram D , let K_D be the matrix whose rows are indexed by the crossings of D , whose columns are

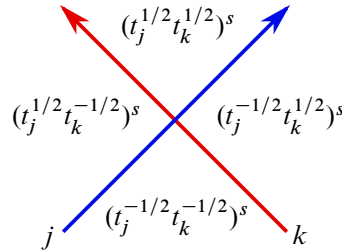


Figure 3: The labels in the definition of K_D around a vertex v with $s = \text{sgn } v$.

indexed by the regions of D , and whose coefficients are defined by the label of the corners in Figure 3. (If a region abuts a corner from two sides, then the corresponding labels should be added.) Finally, let \tilde{K}_D denote the square matrix obtained from K_D by removing two columns corresponding to two adjacent regions (separated by a strand of color 1).

Corollary 1.5 *If D is a connected diagram for a colored link L , then*

$$\det \tilde{K}_D = \pm(t_1 - t_1^{-1}) \nabla_L(t_1, \dots, t_\mu).$$

Note 1.6 In fact, what we get from Corollary 1.5 is the symmetrized Alexander polynomial: since the sign of the determinant depends on the order of the rows and columns of \tilde{K}_D , ie on the numbering of the regions and crossings of D , we cannot determine the sign of the Conway function.

Example 1.7 Consider one last time the 2-colored link illustrated in Figure 1. The matrix K_D equals

$$\begin{bmatrix} t_1^{-1/2} t_2^{1/2} & t_1^{1/2} t_2^{1/2} & 0 & 0 & t_1^{1/2} t_2^{-1/2} & 0 & t_1^{-1/2} t_2^{-1/2} \\ t_1^{1/2} t_2^{-1/2} & t_1^{-1/2} t_2^{-1/2} & t_1^{1/2} t_2^{1/2} & 0 & t_1^{-1/2} t_2^{1/2} & 0 & 0 \\ t_1^{-1/2} t_2^{1/2} & 0 & t_1^{-1/2} t_2^{-1/2} & t_1^{1/2} t_2^{1/2} & t_1^{1/2} t_2^{-1/2} & 0 & 0 \\ t_1^{1/2} t_2^{-1/2} & 0 & 0 & t_1^{-1/2} t_2^{-1/2} & t_1^{-1/2} t_2^{1/2} & 0 & t_1^{1/2} t_2^{1/2} \\ 0 & 0 & 0 & 0 & 1 & 1 & t_1 + t_1^{-1} \end{bmatrix},$$

from which we compute once again $\pm \nabla_L(t_1, t_2) = t_1 t_2 + t_1^{-1} t_2^{-1}$.

Let us now put our results in the context of the preexisting literature.

In 2018, Kashaev [13] defined the matrix $\tau_D(x)$ in the case $\mu = 1$, and conjectured Theorem 1.3 in this special case. Recently, Cimasoni and Ferretti [3] provided a proof of the second part of this conjecture by establishing a connection with Kauffman’s determinantal model of the Alexander polynomial [15]; they also proved the first part of the Kashaev conjecture in a very restrictive case and indirect way. Immediately afterwards, Liu [16] gave a complete proof of the conjecture. Joining our efforts, we now extend Liu’s approach to the general multivariable case in Theorem 1.3 and in its proof.

As for Corollary 1.5, in the case $\mu = 1$ it is nothing but Kauffman’s aforementioned model for the Alexander polynomial [15]. Interestingly, Kauffman did state a multivariable version of his model (a detailed proof was only given many years later by Sato [18]), but it is different from our model.

However, Zibrowius [20] gave a state sum model for the multivariable Conway function which uses the same labels as the ones of Figure 3 up to a sign; using an extension of Kauffman's *clock theorem* [15], this state sum model can be turned into a determinantal model which coincides with the one of Corollary 1.5. This latter fact can be found in Zibrowius's PhD thesis [19, Chapter I.4] (but not in [20]). Therefore, and even though our proof is completely different, Corollary 1.5 is not a new result in the strict sense.

Let us finally mention that Friedl–Kausik–Quintanilha [11] recently provided an algorithm for the computation of generalized Seifert matrices (see Section 2.1) for colored links given as closures of colored braids. Since such matrices can be used to define σ_L , η_L and ∇_L , this method yields an algorithmic computation of these invariants. However, the remarkable feature of Theorem 1.3 remains: a new way of computing these invariants from a single symmetric matrix obtained directly from a colored diagram.

This paper is organized as follows. In Section 2, we recall the necessary background on generalized Seifert matrices (Section 2.1), multivariate signatures of colored links (Section 2.2), and the Conway function (Section 2.3). Section 3 contains the proof of our results, namely the first and second points of Theorem 1.3 in Sections 3.1 and 3.2, respectively, and of Corollary 1.5 in Section 3.3. A slightly informal last Section 3.4 contains results on the Alexander module.

Acknowledgments

We thank Claudius Zibrowius for informing us of his work on the Kauffman model, and the referee for very valuable suggestions. David Cimasoni and Livio Ferretti are supported by the Swiss NSF grant 200021-212085. Jessica Liu is partially supported by NSERC CGS-D.

2 Background

The aim of this section is to briefly recall the necessary background for our work: we start in Section 2.1 with the definition of C-complexes and generalized Seifert forms, then move on to multivariate signatures in Section 2.2, before dealing with the Conway function in Section 2.3.

2.1 Generalized Seifert surfaces and matrices

Seifert surfaces and matrices are well-known tools in the construction and study of (single-variable) abelian link invariants, such as the Levine–Tristram signature and the Alexander polynomial. Less well known is the fact that multivariate invariants can be defined and studied via generalized Seifert surfaces, known as C-complexes. We now introduce these objects, following [2; 8].

To do so, we will use the notation $L = L_1 \cup \cdots \cup L_\mu$ for a μ -colored link, where L_i is the sublink of L consisting of all the components of color i .



Figure 4: A positive clasp intersection (left), and a negative one (right).

Definition 2.1 A *C-complex* for a μ -colored link $L = L_1 \cup \dots \cup L_\mu$ is a union $S = S_1 \cup \dots \cup S_\mu$ of surfaces embedded in S^3 satisfying the following conditions:

- (i) For all i , the surface S_i is a (possibly disconnected) Seifert surface for L_i .
- (ii) For all $i \neq j$, the surfaces S_i and S_j are either disjoint or intersect in a finite number of *clasps*; see Figure 4.
- (iii) For all i, j, k pairwise distinct, the intersection $S_i \cap S_j \cap S_k$ is empty.

A *C-complex* for a 1-colored link L is nothing but a (possibly disconnected) Seifert surface for the oriented link L . The existence of a *C-complex* for any given colored link is easy to establish [2]. On the other hand, the corresponding notion of *S-equivalence* is more difficult to prove; see [10] for the recently corrected statement.

These *C-complexes* allow us to define *generalized Seifert forms* as follows. For any choice of signs $\varepsilon = (\varepsilon_1, \dots, \varepsilon_\mu) \in \{\pm 1\}^\mu$, let

$$\alpha^\varepsilon: H_1(S) \times H_1(S) \rightarrow \mathbb{Z}$$

be the bilinear form given by $\alpha^\varepsilon(x, y) = \text{lk}(x^\varepsilon, y)$, where x^ε denotes a well-chosen representative of the homology class $x \in H_1(S)$ pushed off S_i in the ε_i -normal direction (see [4] for a more formal definition). We denote by A^ε the corresponding *generalized Seifert matrices*, defined with respect to a fixed basis of $H_1(S)$. One easily checks the equality

$$(1) \quad A^{-\varepsilon} = (A^\varepsilon)^T$$

for all $\varepsilon \in \{\pm 1\}^\mu$. The two generalized Seifert matrices A^-, A^+ of a 1-colored link L coincide with the usual Seifert matrix A of the oriented link L and its transposed matrix A^T .

The general principle regarding these matrices is the following: what Seifert matrices can do in one variable for oriented links, generalized Seifert surfaces can do in μ -variables for μ -colored links. In Sections 2.2 and 2.3 we illustrate this principle with two examples of invariants.

2.2 Signatures and nullities of colored links

Fix a *C-complex* S for a μ -colored link L and a basis of $H_1(S)$. Consider an element $\omega = (\omega_1, \dots, \omega_\mu)$ of $\mathbb{T}_*^\mu := (S^1 \setminus \{1\})^\mu$, and set

$$(2) \quad H(\omega) := \sum_{\varepsilon \in \{\pm 1\}^\mu} \left(\prod_{i=1}^\mu (1 - \bar{\omega}_i^{\varepsilon_i}) \right) A^\varepsilon.$$

Using (1), one easily checks that $H(\omega)$ is a Hermitian matrix and hence admits a well-defined signature $\text{sign } H(\omega) \in \mathbb{Z}$ and nullity $\text{null } H(\omega) \in \mathbb{Z}_{\geq 0}$.

Definition 2.2 [4] The *signature* and *nullity* of the μ -colored link L are functions

$$\sigma_L, \eta_L : \mathbb{T}_*^\mu \rightarrow \mathbb{Z}$$

defined by $\sigma_L(\omega) := \text{sign } H(\omega)$ and $\eta_L(\omega) := \text{null } H(\omega)$, respectively.

The fact that these functions are well-defined invariants, ie do not depend on the choice of the C-complex S for L , relies on the aforementioned notion of S-equivalence [4; 10]. In the case $\mu = 1$, the functions $\sigma_L, \eta_L : S^1 \setminus \{1\} \rightarrow \mathbb{Z}$ are the signature and nullity of the Hermitian matrix $(1 - \omega)A + (1 - \bar{\omega})A^T$: they coincide with the Levine–Tristram signature and nullity of the oriented link L . We refer to the recent survey [5] for background on this classical invariant.

In a nutshell, all the remarkable properties of the Levine–Tristram signature extend to the multivariable setting. For example, the function σ_L is constant on the connected components of the complement in \mathbb{T}_*^μ of the zeros of the multivariable Alexander polynomial $\Delta_L(t_1, \dots, t_\mu)$ [4] (see Section 2.3 below). Also, if $(\omega_1, \dots, \omega_\mu) \in \mathbb{T}_*^\mu$ is not the root of any Laurent polynomial $p(t_1, \dots, t_\mu)$ with $p(1, \dots, 1) = \pm 1$, then $\sigma_L(\omega_1, \dots, \omega_\mu)$ and $\eta_L(\omega_1, \dots, \omega_\mu)$ are invariant under *topological concordance* of colored links [6].

2.3 The Conway function of a colored link

The one-variable Alexander polynomial $\Delta_L(t)$ of an oriented link L can be generalized to a μ -variable polynomial invariant $\Delta_L(t_1, \dots, t_\mu)$ of a μ -colored link L , a fact known to Alexander himself [1]. To do so, consider the exterior $X_L := S^3 \setminus \nu(L)$ of L and the surjective group homomorphism

$$\pi_1(X_L) \rightarrow \mathbb{Z}^\mu, \quad [\gamma] \mapsto (\text{lk}(\gamma, L_1), \dots, \text{lk}(\gamma, L_\mu)).$$

This defines a regular \mathbb{Z}^μ -cover \widehat{X}_L of X_L whose homology groups are hence equipped with the structure of a module over the group ring $\mathbb{Z}[\mathbb{Z}^\mu] = \mathbb{Z}[t_1^{\pm 1}, \dots, t_\mu^{\pm 1}]$. In particular, the module $\mathcal{A}_L := H_1(\widehat{X}_L)$ is called the (multivariable) *Alexander module* of L (see Section 3.4), and a greatest common divisor of the elements of its first elementary ideal is the *Alexander polynomial* of L .

This Laurent polynomial in μ -variables is only well defined up to multiplication by units of the ring $\mathbb{Z}[t_1^{\pm 1}, \dots, t_\mu^{\pm 1}]$, ie up to a sign and powers of the variables. This later indeterminacy can be easily overcome by harnessing the symmetry of Δ and requiring it to satisfy $\Delta_L(t_1^{-1}, \dots, t_\mu^{-1}) = \pm \Delta_L(t_1, \dots, t_\mu)$, but the sign issue is a nontrivial one.

The solution was suggested by Conway in his landmark paper [7]. He claimed the existence of a well-defined rational function ∇_L satisfying

$$(3) \quad \nabla_L(t_1, \dots, t_\mu) \doteq \begin{cases} (1/(t_1 - t_1^{-1}))\Delta_L(t_1^2) & \text{if } \mu = 1; \\ \Delta(t_1^2, \dots, t_\mu^2) & \text{if } \mu > 1, \end{cases}$$

where \doteq stands for the equality up to multiplication by $\pm t_1^{v_1} \cdots t_\mu^{v_\mu}$ with $v_1, \dots, v_\mu \in \mathbb{Z}$. The first explicit construction of this *Conway function* was given by Hartley [12] using free differential calculus, but we will make use of the following geometric construction [2]. Given any *connected* C-complex $S = S_1 \cup \cdots \cup S_\mu$ for a L , consider the matrix

$$(4) \quad A_S := \sum_{\varepsilon \in \{\pm 1\}^\mu} \left(\prod_{i=1}^{\mu} \varepsilon_i t_i^{\varepsilon_i} \right) A^\varepsilon.$$

Then, the Conway function of L is given by

$$(5) \quad \nabla_L(t_1, \dots, t_\mu) = (\text{sgn } S) \left(\prod_{i=1}^{\mu} (t_i - t_i^{-1})^{X(S \setminus S_i) - 1} \right) \det(-A_S),$$

where $\text{sgn } S$ denotes the product of the signs of the clasps of S (recall Figure 4). Note that in the case $\mu = 1$, (3) and (5) lead to the formula $\Delta_L(t) = \det(t^{-1/2}A - t^{1/2}A^T)$, the classical definition of the Alexander–Conway polynomial of the oriented link L [14].

This geometric construction of the Conway function yields straightforward proofs of the various properties of this invariant. In particular, it yields a “geometric explanation” of the local relations that can be used to compute it from a link diagram; see [2] for more details.

3 Proofs of the main results

We will now provide proofs of our results. More precisely, we start in Section 3.1 with the demonstration of the first part of Theorem 1.3 on signatures and nullities. Section 3.2 deals with the second part on the Conway function, while Section 3.3 contains the proof of Corollary 1.5 on the multivariable Kauffman model. Finally, Section 3.4 consists in a slightly informal discussion on the Alexander module.

3.1 Signatures and nullities

We discuss how to compute the multivariable signature, proving part (i) of Theorem 1.3 which we now restate for convenience.

Proposition 3.1 *Let D be a diagram for a μ -colored link L . For any $\omega = (\omega_1, \dots, \omega_\mu) \in (S^1 \setminus \{1\})^\mu$, the signature and nullity of L are given by*

$$\sigma_L(\omega) = \frac{1}{2}(\text{sign } \tilde{\tau}_D(\omega) - w_m(D)) \quad \text{and} \quad \eta_L(\omega) = \frac{1}{2} \text{null } \tilde{\tau}_D(\omega),$$

where $w_m(D)$ is the sum of the signs of all monochromatic crossings of D , and $\tau_D(\omega)$ stands for the evaluation of $\tau_D(x)$ at $x_j = \text{Re}(\omega_j^{1/2})$ and $x_{jk} = \text{Re}(\omega_j^{1/2} \omega_k^{1/2})$.

Proof Fix an arbitrary μ -colored link L , and let rL denote the μ -colored link L with reverse orientation but same coloring as L . Let $L \#_1 rL$ denote a connected sum of L and rL along two components of color 1. Unlike for knots, the isotopy type of the connected sum of (colored) links is not well defined. However, any two such connected sums have the same signature and nullity, as these invariants behave

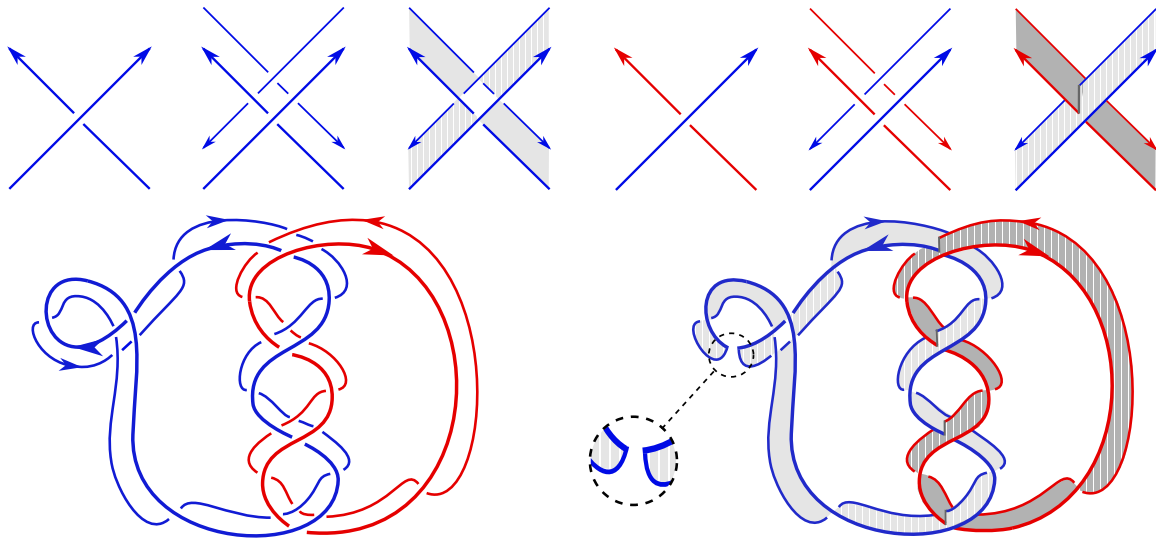


Figure 5: First row: the construction of a C-complex S for $L \#_1 rL$ near a monochromatic crossing (left three images) and a bichromatic crossing (right three images). Second row, left: the diagram for the disjoint sum of L and rL obtained from D of Figure 1. Second row, right: the corresponding C-complex S for $L \#_1 rL$.

additively under this ill-defined operation; this follows from Propositions 2.12 and 2.5 of [4]. Since the signature and nullity are unchanged by reversing the orientation (see [4, Corollary 2.9]), the relations

$$(6) \quad \sigma_{L\#_1 rL}(\omega) = 2\sigma_L(\omega) \quad \text{and} \quad \eta_{L\#_1 rL}(\omega) = 2\eta_L(\omega)$$

hold for any such connected sum.

The idea of the proof is to use a diagram D for L to construct a C-complex S for $L \#_1 rL$ whose first homology has a basis given by classes of loops corresponding to the regions and the monochromatic crossings of D — minus the two regions near the connected sum. By taking generalized Seifert matrices with respect to this basis, we show that the matrix $H(\omega)$ used in Definition 2.2 is congruent to a block-diagonal matrix of the form $\tilde{\tau}_D(\omega) \oplus Z$ with $\sigma(Z) = -w_m(D)$ and $\text{null } Z = 0$. Combined with (6), this completes the proof.

We now give the details. To construct a C-complex for $L \#_1 rL$ from D , we use the following procedure (see Figure 5 (top row) for the construction near crossings, and Figure 5 (bottom row) for an example).

- (i) At each crossing of D , draw a copy of the corresponding crossing for rL “a bit above and behind” the crossing of D .
- (ii) Connect the remaining strands of rL to each other following along the edges of D , possibly creating an additional crossing along each edge (with rL passing under L). This yields a diagram for the disjoint sum of L and rL .

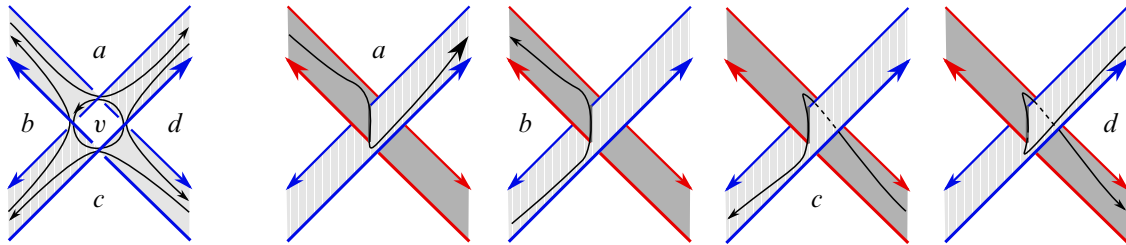


Figure 6: The five cycles of S near a monochromatic crossing (left, one image) and the four cycles of S near a bichromatic crossing (right, four images). The labels a, b, c, d, v for the regions are used for the local linking matrices in Figure 8.

- (iii) Create a clasp intersection near each bichromatic crossing of D and apply the usual Seifert algorithm near each monochromatic crossing of D . This yields a C -complex for the disjoint sum of L and rL .
- (iv) Finally, pick a point on a strand of color 1 in D and cut the corresponding surface at that place. The result is a C -complex S for (some version of) $L \#_1 rL$.

Note that S deformation retracts onto a graph defined as follows: take the 4-regular graph underlying the diagram D , add a loop at each vertex corresponding to a monochromatic vertex, and remove the edge along which the connected sum was performed. As a consequence, a natural basis for $H_1(S)$ is given by classes of cycles corresponding to the regions and monochromatic crossings of D — minus the two regions adjacent to where the connected sum happens. We use the convention that the cycles representing our basis of $H_1(S)$ are oriented counterclockwise in the plane of D where S is drawn, and denote by the same letter a region or monochromatic crossing and its corresponding cycle of $H_1(S)$. Using this explicit basis, we now study the local contribution to generalized Seifert matrices near crossings of D .

For the remainder of the proof, we adopt the following convention: we say a crossing v has color $(j, k) = (j_v, k_v)$ if its incoming left strand is color j , and incoming right strand has color k , as in Figure 2. If $j = k$, we may simply say it has color j .

As illustrated in Figure 6, there are five homology classes in $H_1(S)$ coming into play near a monochromatic crossing of D , and four near a bichromatic crossing. To compute the Seifert forms locally, we need to choose a convention for drawing the pushouts so that no contribution to the linking numbers comes from the crossings that occur along the edges of D : this is illustrated in Figure 7.

The local contribution to the matrices A^ε near different types of crossings of D are given in Figure 8. Since the C -complex near a negative bichromatic crossing is the mirror image of the C -complex near a positive bichromatic crossing, the contribution near a negative bichromatic crossing can be obtained by changing the sign of the contribution near a positive crossing. Moreover, by the symmetry (1), the contribution for opposite choices of ε can be obtained by transposition. In conclusion, the local linking of all possible cases can be computed from those in Figure 8. For the sake of clarity, let us mention that in the case of monochromatic crossings as well, one could compute the contribution for negative crossings



Figure 7: Convention for drawing the pushouts in the positive (left) and negative (right) directions near a crossing of $L \#_1 rL$ occurring along an edge of D : if the pushout appears behind the surface (dotted gray) then it is drawn between the original curve (black) and the diagram for L (thick blue); if the pushout appears in front of the surface (solid gray) then it is drawn between the curve and the diagram for rL (thin blue).

from the one for positive crossings: the linking numbers involving the curves b and d (or their pushout) is unchanged, while the others change in a controlled way. However, since the precise relation is less immediately evident, we prefer to include both matrices in Figure 8.

We now write $H(\omega)$ as a sum over crossings of D . For a crossing v , let A_v^ε denote the square matrix (of size equal to the first Betti number of S) given by the contribution to A^ε from the linking near v ; in other words, A_v^ε is zero everywhere except in the 5×5 or 4×4 minor corresponding to the homology classes coming into play near v , where its values are given by the local contributions to linking numbers given by the matrices from Figure 8. We have

$$(7) \quad H(\omega) = \sum_{\varepsilon \in \{\pm 1\}^\mu} \left(\prod_{i=1}^{\mu} (1 - \bar{\omega}_i^{\varepsilon_i}) \right) A^\varepsilon = \sum_v \sum_{\varepsilon \in \{\pm 1\}^\mu} \left(\prod_{i=1}^{\mu} (1 - \bar{\omega}_i^{\varepsilon_i}) \right) A_v^\varepsilon =: \sum_v H_v,$$

where $H_v = \sum_{\varepsilon} \left(\prod_{i=1}^{\mu} (1 - \bar{\omega}_i^{\varepsilon_i}) \right) A_v^\varepsilon$, and the sums indexed by v always refer to the sum over all crossings of D . Note that A_v^ε is entirely specified by ε_{j_v} and ε_{k_v} . Thus, we use $A_v^{(\alpha, \beta)}$ to denote A_v^ε for any ε with $\varepsilon_{j_v} = \alpha$ and $\varepsilon_{k_v} = \beta$. If v is monochromatic with $\varepsilon_{j_v} = \varepsilon_{k_v} = \alpha$, we simply write $A_v^{(\alpha)}$.

lk	a	b	c	d	v	lk	a	b	c	d	v	lk	a	b	c	d	lk	a	b	c	d	
$a^{(1)}$	$-\frac{1}{2}$	$-\frac{1}{2}$	0	0	1	$a^{(1)}$	$\frac{1}{2}$	$-\frac{1}{2}$	0	0	0	$a^{(1,1)}$	$-\frac{1}{2}$	$-\frac{1}{2}$	0	0	$a^{(1,-1)}$	0	0	0	0	
$b^{(1)}$	0	0	0	0	0	$b^{(1)}$	0	0	0	0	0	$b^{(1,1)}$	0	0	0	0	$b^{(1,-1)}$	$-\frac{1}{2}$	$\frac{1}{2}$	0	0	
$c^{(1)}$	0	$-\frac{1}{2}$	$-\frac{1}{2}$	0	1	$c^{(1)}$	0	$-\frac{1}{2}$	$\frac{1}{2}$	0	0	$c^{(1,1)}$	0	$\frac{1}{2}$	$-\frac{1}{2}$	0	$c^{(1,-1)}$	1	$-\frac{1}{2}$	0	$-\frac{1}{2}$	
$d^{(1)}$	$\frac{1}{2}$	0	$\frac{1}{2}$	0	-1	$d^{(1)}$	$\frac{1}{2}$	0	$\frac{1}{2}$	0	-1	$d^{(1,1)}$	$\frac{1}{2}$	-1	$\frac{1}{2}$	0	$d^{(1,-1)}$	$-\frac{1}{2}$	0	0	$\frac{1}{2}$	
$v^{(1)}$	0	1	0	0	-1	$v^{(1)}$	-1	1	-1	0	1											

Figure 8: The local contributions to linking numbers near crossings of D , where the curves are labeled as in Figure 6. First two tables: contributions near a positive (first) and negative (second) monochromatic crossing of color j , where $x^{(1)}$ stands for x^ε with $\varepsilon_j = 1$. Last two tables: contributions near a positive bichromatic crossing of colors (j, k) , with x^ε denoted by $x^{(\varepsilon_j, \varepsilon_k)}$.

When v is monochromatic of color $j = j_v$, the matrix H_v can be rewritten as

$$\begin{aligned} H_v &= \sum_{(\varepsilon_1, \dots, \hat{\varepsilon}_j, \dots, \varepsilon_\mu) \in \{\pm 1\}^{\mu-1}} \left(\prod_{\substack{i=1 \\ i \neq j}}^{\mu} (1 - \bar{\omega}_i^{\varepsilon_i}) \right) ((1 - \bar{\omega}_j)A_v^{(1)} + (1 - \omega_j)A_v^{(-1)}) \\ &= \left(\prod_{\substack{i=1 \\ i \neq j}}^{\mu} (1 - \bar{\omega}_i)(1 - \omega_i) \right) ((1 - \bar{\omega}_j)A_v^{(1)} + (1 - \omega_j)A_v^{(-1)}), \end{aligned}$$

where the second equality uses the relation $(1 - \bar{\omega}_i) + (1 - \omega_i) = (1 - \bar{\omega}_i)(1 - \omega_i)$. Hence, using the notation $s_i := (1 - \omega_i)$, the matrix H_v for a monochromatic crossing v of color j is given by

$$(8) \quad H_v = \left(\prod_{\substack{i=1 \\ i \neq j}}^{\mu} |s_i|^2 \right) (\bar{s}_j A_v^{(1)} + s_j A_v^{(-1)}) =: \left(\prod_{\substack{i=1 \\ i \neq j}}^{\mu} |s_i|^2 \right) A_v,$$

while for a bichromatic crossing of colors (j, k) , it is given by

$$(9) \quad H_v = \left(\prod_{\substack{i=1 \\ i \neq j, k}}^{\mu} |s_i|^2 \right) (\bar{s}_j \bar{s}_k A_v^{(1,1)} + \bar{s}_j s_k A_v^{(1,-1)} + s_j \bar{s}_k A_v^{(-1,1)} + s_j s_k A_v^{(-1,-1)}) =: \left(\prod_{\substack{i=1 \\ i \neq j, k}}^{\mu} |s_i|^2 \right) A_v,$$

where we use the notation

$$A_v := \begin{cases} \bar{s}_j A_v^{(1)} + s_j A_v^{(-1)} & \text{if } v \text{ is monochromatic of color } j; \\ \bar{s}_j \bar{s}_k A_v^{(1,1)} + \bar{s}_j s_k A_v^{(1,-1)} + s_j \bar{s}_k A_v^{(-1,1)} + s_j s_k A_v^{(-1,-1)} & \text{if } v \text{ is bichromatic of colors } j, k. \end{cases}$$

Plugging (8) and (9) into (7), we get

$$(10) \quad H(\omega) = \sum_v H_v = \sum_v \left(\prod_{i \neq j_v, k_v}^{\mu} |s_i|^2 \right) A_v.$$

Writing the Hermitian matrix $H(\omega)$ as a block matrix of the form

$$H(\omega) = \begin{pmatrix} X & Y \\ Y^* & Z \end{pmatrix},$$

where the first line and column correspond to regions and the second line and column correspond to monochromatic crossings, we see that Z is a diagonal matrix with coefficient corresponding to the monochromatic crossing v given by $-(\prod_{i=1}^{\mu} |s_i|^2) \operatorname{sgn} v$. In particular, Z is invertible (and hence has nullity $\operatorname{null} Z = 0$), while its signature is equal to $\sigma(Z) = -w_m(D)$. Furthermore, $H(\omega)$ is congruent to the block diagonal matrix

$$(11) \quad MH(\omega)M^* = \begin{pmatrix} X - YZ^{-1}Y^* & 0 \\ 0 & Z^{-1} \end{pmatrix}$$

via $M = \begin{pmatrix} I & -YZ^{-1} \\ 0 & Z^{-1} \end{pmatrix}$. Since $\sigma(Z^{-1}) = \sigma(Z) = -w_m(D)$ and $\operatorname{null} Z^{-1} = 0$, it remains to show that the matrix $X - YZ^{-1}Y^*$ coincides with $\tilde{\tau}_D(\omega)$ up to transformations that do not affect the signature and nullity.

	a	b	c	d		a	b	c	d
a	$\frac{\omega_j + \bar{\omega}_j}{2}$	$-\frac{1 + \bar{\omega}_j}{2}$	1	$-\frac{1 + \omega_j}{2}$	a	$-\frac{\bar{s}_j \bar{s}_k + s_j s_k}{2}$	$\frac{\bar{s}_k(\omega_j - \bar{\omega}_j)}{2}$	$s_j \bar{s}_k$	$\frac{s_j(\bar{\omega}_k - \omega_k)}{2}$
b	$-\frac{1 + \omega_j}{2}$	1	$-\frac{1 + \omega_j}{2}$	ω_j	b	$\frac{s_k(\bar{\omega}_j - \omega_j)}{2}$	$\frac{s_j \bar{s}_k + \bar{s}_j s_k}{2}$	$\frac{s_j(\bar{\omega}_k - \omega_k)}{2}$	$-s_j s_k$
c	1	$-\frac{1 + \bar{\omega}_j}{2}$	$\frac{\omega_j + \bar{\omega}_j}{2}$	$-\frac{1 + \omega_j}{2}$	c	$\bar{s}_j s_k$	$\frac{\bar{s}_j(\omega_k - \bar{\omega}_k)}{2}$	$-\frac{\bar{s}_j \bar{s}_k + s_j s_k}{2}$	$\frac{s_k(\bar{\omega}_j - \omega_j)}{2}$
d	$-\frac{1 + \bar{\omega}_j}{2}$	$\bar{\omega}_j$	$-\frac{1 + \bar{\omega}_j}{2}$	1	d	$\frac{\bar{s}_j(\omega_k - \bar{\omega}_k)}{2}$	$-\bar{s}_j \bar{s}_k$	$\frac{\bar{s}_k(\omega_j - \bar{\omega}_j)}{2}$	$\frac{s_j \bar{s}_k + \bar{s}_j s_k}{2}$

Figure 9: The local contribution to $X - YZ^{-1}Y^*$ for a positive monochromatic and bichromatic crossing v . If v is a negative crossing, the matrix is the negative of the corresponding matrix for a positive crossing. Left: v positive monochromatic crossing of color j . Right: v positive bichromatic crossing of colors (j, k) .

To determine $X - YZ^{-1}Y^*$, let us fix two regions a and b . Note that

$$(YZ^{-1}Y^*)_{a,b} = \sum_v Y_{a,v} Z_{v,v}^{-1} \bar{Y}_{b,v},$$

and that it is only possible for both $Y_{a,v}$ and $Y_{b,v}$ to be nonzero if the regions a and b are both adjacent to the crossing v . Therefore, the matrix $YZ^{-1}Y^*$ is a sum over crossings, where the contribution at each crossing is a matrix that is zero everywhere except in the 4×4 minor corresponding to the four adjacent regions of the crossing. The same is then true for $X - YZ^{-1}Y^*$. For a bichromatic crossing v , there is no column of Y that corresponds to v , so this 4×4 minor is nothing but the nonzero 4×4 minor of A_v . For a monochromatic crossing v , the 4×4 minor of $X - YZ^{-1}Y^*$ is obtained by performing the corresponding matrix operations to the 5×5 minor of A_v . The computation is similar to the single variable case; see [16] for more details. The explicit values for these local contributions to $X - YZ^{-1}Y^*$ are given in Figure 9. Since the minor for a negative crossing turns out to be the negative of the minor for a positive one, we only provide these minors in the case of positive crossings.

We need to perform one last change of basis, which we now describe. If the sublink L_i winds around the region a a total of α_i times, then multiply the basis element corresponding to a with $\prod_{i=1}^{\mu} (-\omega_i^{-1/2})^{\alpha_i}$. This change of basis alters the matrices in Figure 9 in the following way. If v is a monochromatic crossing of color j , then L_j winds around b once more than it does around a and c , and it winds around d once fewer. Thus the rows corresponding to b and d are multiplied by $-\omega_j^{-1/2}$ and $-\omega_j^{1/2}$ respectively, and the columns are multiplied by the conjugates $-\omega_j^{1/2}$ and $-\omega_j^{-1/2}$. If v is a bichromatic crossing of colors (j, k) , then L_j winds once more around a and b than it does around c and d , and L_k winds once more around b and c than it does around a and d . Thus we multiply the row for a by $-\omega_j^{-1/2}$, the row for c by $-\omega_k^{-1/2}$, and the row for b by $\omega_j^{-1/2} \omega_k^{-1/2}$, and we multiply the corresponding columns by the conjugates.

Remarkably, the sum of local contributions to $X - YZ^{-1}Y^*$ from Figure 9 can now be written in terms of the single matrix $\tau_v(\omega)$, the evaluation of $\tau_v(x)$ at $x_j = \text{Re}(\omega_j^{1/2})$ and $x_{jk} = \text{Re}(\omega_j^{1/2} \omega_k^{1/2})$, in both

the monochromatic and bichromatic cases. Indeed, for a monochromatic crossing v , it coincides with $(\text{sgn } v)\tau_v(\omega)$, while for a bichromatic crossing, it yields

$$4 \text{sgn } v \sqrt{1 - x_{j_v}^2} \sqrt{1 - x_{k_v}^2} \tau_v(\omega).$$

The result of the matrix $X - YZ^{-1}Y^*$ after this change of basis thus gives

$$\begin{aligned} (12) \quad \sum_{v \text{ monochr}} \left(\prod_{i \neq j_v} |s_i|^2 \right) \text{sgn } v \tau_v(\omega) + \sum_{v \text{ bichr}} \left(\prod_{i \neq j_v, k_v} |s_i|^2 \right) 4 \text{sgn } v \sqrt{1 - x_{j_v}^2} \sqrt{1 - x_{k_v}^2} \tau_v(\omega) \\ = \frac{1}{4} \left(\prod_{i=1}^{\mu} |s_i|^2 \right) \sum_v \frac{\text{sgn } v}{\sqrt{1 - x_{j_v}^2} \sqrt{1 - x_{k_v}^2}} \tau_v(\omega) = \frac{1}{4} \left(\prod_{i=1}^{\mu} |s_i|^2 \right) \tilde{\tau}_D(\omega). \end{aligned}$$

The positive constant $\frac{1}{4} \prod_{i=1}^{\mu} |s_i|^2$ affects neither the signature nor the nullity, so we have

$$2\sigma_L(\omega) = \sigma(X - YZ^{-1}Y^*) + \sigma(Z^{-1}) = \sigma(\tilde{\tau}_D(\omega)) - w_m(D),$$

$$2\eta_L(\omega) = \eta(X - YZ^{-1}Y^*) + \eta(Z^{-1}) = \eta(\tilde{\tau}_D(\omega)). \quad \square$$

Note 3.2 In the manipulations of matrices throughout this proof, we never used the fact that the ω_j are complex numbers (except, of course, when computing signatures): the only property needed is that $\omega_j \bar{\omega}_j = 1$. Therefore, everything works equally well if we consider the $\omega_j^{1/2}$ as *formal variables*, and set $\bar{\omega}_j^{1/2} := \omega_j^{-1/2}$, $x_j = \text{Re}(\omega_j^{1/2}) := \frac{1}{2}(\omega_j^{1/2} + \omega_j^{-1/2})$, $\sqrt{1 - x_j^2} = \text{Im}(\omega_j^{1/2}) := \frac{1}{2i}(\omega_j^{1/2} - \omega_j^{-1/2})$.

3.2 The Conway function

We now discuss how to compute the Conway function of a colored link from the matrix $\tilde{\tau}_D(x)$ and prove the second point of Theorem 1.3, which we now restate for convenience.

Proposition 3.3 *If D is a connected μ -colored diagram for a μ -colored link L , we have the equality*

$$\nabla_L^2(t_1, \dots, t_\mu) = \frac{1}{(t_1 - t_1^{-1})^2} \left(\prod_v (-\text{sgn } v) \left(\frac{1}{2}(t_j - t_j^{-1}) \right) \left(\frac{1}{2}(t_k - t_k^{-1}) \right) \right) \cdot \det \tilde{\tau}_D(t^2),$$

where the product is over all crossings of D , the indices j, k are the (possibly identical) colors of the two strands crossing at v , and $\tau_D(t^2)$ stands for the evaluation of $\tau_D(x)$ at

$$x_j = \frac{1}{2}(t_j + t_j^{-1}), \quad x_{jk} = \frac{1}{2}(t_j t_k + t_j^{-1} t_k^{-1}).$$

Our starting point is (5), which expresses the Conway function ∇_L in terms of the matrix A_S associated to a connected C-complex S for L ; recall (4). If $H(\omega)$ denotes the matrix defined in (2), which is used for computing the multivariable signature, and we consider $\omega_i^{-1/2} =: t_i$ as a *formal variable*, we have

$$\begin{aligned} (13) \quad H(t^{-2}) := H(t_1^{-2}, \dots, t_\mu^{-2}) &= \sum_{\varepsilon \in \{\pm 1\}^\mu} \left(\prod_{i=1}^{\mu} (1 - t_i^{2\varepsilon_i}) \right) A^\varepsilon = \sum_{\varepsilon \in \{\pm 1\}^\mu} \left(\prod_{i=1}^{\mu} \varepsilon_i t_i^{\varepsilon_i} \varepsilon_i (t_i^{-\varepsilon_i} - t_i^{\varepsilon_i}) \right) A^\varepsilon \\ &= \left(\prod_{i=1}^{\mu} -(t_i - t_i^{-1}) \right) \sum_{\varepsilon \in \{\pm 1\}^\mu} \left(\prod_{i=1}^{\mu} \varepsilon_i t_i^{\varepsilon_i} \right) A^\varepsilon = (-1)^\mu \left(\prod_{i=1}^{\mu} (t_i - t_i^{-1}) \right) A_S. \end{aligned}$$

Hence, the Conway function can in fact be computed from the matrix H .

In order to prove Proposition 3.3, we adopt the same strategy as in the computation of the signature: starting from a *connected* diagram D , we use the C-complex S for $L \#_1 rL$ constructed in the previous section to compute the Conway function of $L \#_1 rL$, and conclude by applying well-known formulas relating the Conway function of a connected sum to the Conway functions of the summands. By construction, requiring D to be connected precisely means that S is connected.

Let $D = D_1 \cup \dots \cup D_\mu$ be a connected, μ -colored diagram of a μ -colored link L and let $S = S_1 \cup \dots \cup S_\mu$ be the C-complex for $L \#_1 rL$ defined in the proof of Proposition 3.1. As before, the notation $\#_1$ stands for the connected sum performed along a component of color 1. Let n_m and n_b denote the number of monochromatic and bichromatic crossings of D , respectively, and $n = n_m + n_b$ be the total number of crossings. Similarly, let $n_{m,i}$ and $n_{b,i}$ denote respectively the number of monochromatic and bichromatic crossings of D without the color i . Finally, recall that $\text{sgn } S$ denotes the product of the signs of the clasps of S (see Figure 4).

Lemma 3.4 *With the notations above, the C-complex S satisfies:*

- (i) $\text{sgn } S = \prod_{v \text{ bichr}} \text{sgn } v$, where the product is taken over all bichromatic crossings.
- (ii) Its first Betti number is equal to $b_1(S) = n + n_m$ and is even.
- (iii) $\chi(S \setminus S_1) = -n_{b,1} - 2n_{m,1}$ and $\chi(S \setminus S_i) = 1 - n_{b,i} - 2n_{m,i}$ for all $i \neq 1$.

Proof The first equality is clear by construction, since S has one clasp for each bichromatic crossing of D , and the sign of the clasp is equal to the sign of the corresponding crossing. To check the second point, let r denote the number of regions of D . By construction, we have $b_1(S) = (r - 2) + n_m$, while an Euler characteristic computation yields the equality $r - 2 = n$. Since n_b is always even, it follows that $b_1(S) = n + n_m = n_b + 2n_m$ is also even. As for the third point, one just needs to notice that $S \setminus S_i$ deformation retracts onto a graph Γ_i constructed from (the planar projection of) the diagram $D \setminus D_i$ by adding one loop to each monochromatic crossing and, if $i \neq 1$, by removing one edge of color 1 (which corresponds to performing the connected sum). The number of vertices of Γ_i minus the number of its edges yields the result. \square

To shorten our formulas, we use the notation $s_b := \prod_{v \text{ bichr}} \text{sgn } v$ and $s_m := \prod_{v \text{ monochr}} \text{sgn } v$, where the product is taken respectively over all bichromatic and monochromatic crossings of D . We are now ready to prove Proposition 3.3.

Proof of Proposition 3.3 In what follows, we always evaluate H at $\omega_i = t_i^{-2}$, considered as formal variables, and rely on Note 3.2 to use the computations from the proof of Proposition 3.1 in this formal setting. Recall that, by (11) and the ensuing discussion, there exists a matrix M' such that

$$M' H(\omega) M'^* = \tilde{\tau}'_D(\omega) \oplus Z^{-1},$$

where the matrix

$$Z = \left(\prod_{i=1}^{\mu} (1 - \omega_i)(1 - \omega_i^{-1}) \right) \text{diag}(-\text{sgn } v)$$

is indexed by the monochromatic crossings of D , and $\det M' = \det M'^* = \det Z^{-1}$ — in the notations from the proof of Proposition 3.1, $\tilde{\tau}'_D(\omega)$ is the matrix $X - YZ^{-1}Y^*$ after the final change of basis, as in (12). Therefore,

$$\det H(\omega) = \det Z \det \tilde{\tau}'_D(\omega) = (-1)^{n_m} s_m \left(\prod_{i=1}^{\mu} (1 - \omega_i)(1 - \omega_i^{-1}) \right)^{n_m} \det \tilde{\tau}'_D(\omega).$$

Evaluating at $\omega_i = t_i^{-2}$, and using the equality $(1 - t_i^2)(1 - t_i^{-2}) = -(t_i - t_i^{-1})^2$, we obtain

$$(14) \quad \det H(t^{-2}) = (-1)^{n_m + \mu n_m} s_m \left(\prod_{i=1}^{\mu} (t_i - t_i^{-1})^{2n_m} \right) \det \tilde{\tau}'_D(t^2).$$

Furthermore, since $\tilde{\tau}'_D$ is a matrix of size n and (12) yields

$$\tilde{\tau}'_D(\omega) = \frac{1}{4} \left(\prod_{i=1}^{\mu} (1 - \omega_i)(1 - \omega_i^{-1}) \right) \tilde{\tau}_D(\omega),$$

we have

$$(15) \quad \det \tilde{\tau}'_D(t^2) = (-1)^{\mu n} \left(\prod_{i=1}^{\mu} (t_i - t_i^{-1})^{2n} \right) \det \left(\frac{1}{4} \tilde{\tau}_D(t^2) \right).$$

Putting everything together, and writing t for (t_1, \dots, t_{μ}) , we obtain

$$\begin{aligned} & \nabla_L^2(t) \\ &= \nabla_L(t) \nabla_{rL}(t) = \frac{1}{t_1 - t_1^{-1}} \nabla_{L\#_1 rL}(t) \\ &\stackrel{(5)}{=} \frac{1}{t_1 - t_1^{-1}} (-1)^{b_1(S)} (\text{sgn } S) \left(\prod_{i=1}^{\mu} (t_i - t_i^{-1})^{\chi(S \setminus S_i) - 1} \right) \det A_S \\ &\stackrel{(13)}{=} \frac{s_b}{t_1 - t_1^{-1}} \left(\prod_{i=1}^{\mu} (t_i - t_i^{-1})^{\chi(S \setminus S_i) - 1} \right) (-1)^{\mu b_1(S)} \left(\prod_{i=1}^{\mu} (t_i - t_i^{-1})^{-b_1(S)} \right) \det H(t^{-2}) \\ &\stackrel{(14)}{=} \frac{s_b}{t_1 - t_1^{-1}} \left(\prod_{i=1}^{\mu} (t_i - t_i^{-1})^{\chi(S \setminus S_i) - 1 - b_1(S)} \right) (-1)^{n_m + \mu n_m} s_m \left(\prod_{i=1}^{\mu} (t_i - t_i^{-1})^{2n_m} \right) \det \tilde{\tau}'_D(t^2) \\ &\stackrel{(15)}{=} \frac{(-1)^{n_m + \mu n_m} s_b s_m}{t_1 - t_1^{-1}} \left(\prod_{i=1}^{\mu} (t_i - t_i^{-1})^{\chi(S \setminus S_i) - 1 - b_1(S) + 2n_m} \right) (-1)^{\mu n} \left(\prod_{i=1}^{\mu} (t_i - t_i^{-1})^{2n} \right) \det \left(\frac{1}{4} \tilde{\tau}_D(t^2) \right) \\ &= \frac{(-1)^{n_m}}{(t_1 - t_1^{-1})^2} \cdot \frac{s_b s_m}{4^n} \left(\prod_{i=1}^{\mu} (t_i - t_i^{-1})^{-n_{b,i} - 2n_{m,i} + n + n_m} \right) \det \tilde{\tau}_D(t^2), \end{aligned}$$

where in the first line we used Corollary 2 and Proposition 5 of [2]. The following equalities derive, as indicated, from (5), (13), (14) and (15), together with the first point of Lemma 3.4 in the third line (with (13)), the second point in the fourth line (with (14)), and the second and third points in the last line.

To conclude, we note that the exponent $-n_{b,i} - 2n_{m,i} + n + n_m$ appearing in the last line is equal to the number of bichromatic crossings involving a strand of color i plus twice the number of monochromatic

crossings of color i . Therefore,

$$\frac{1}{4^n} (s_b s_m) \prod_{i=1}^{\mu} (t_i - t_i^{-1})^{-n_{b,i} - 2n_{m,i} + n + n_m} = \prod_v (\operatorname{sgn} v) \left(\frac{1}{2}(t_j - t_j^{-1})\right) \left(\frac{1}{2}(t_k - t_k^{-1})\right),$$

where the product on the right-hand side is over all crossings of D and the indices j, k are the two (possibly identical) colors of strands crossing at v . The proposition now follows from observing that $(-1)^{n_m} = (-1)^n$ since $n = n_m + n_b$ and n_b is even. \square

3.3 The multivariate Kauffman model

Having finished the proof of Theorem 1.3, we now turn our attention to Corollary 1.5.

Starting from a *connected* diagram D of a μ -colored link, let K_D (or simply K) be the matrix defined by the labels in Figure 3, and \tilde{K} be the square matrix obtained from K by removing two columns corresponding to two adjacent regions of D separated by a strand of color 1. Corollary 1.5 is a direct consequence of Proposition 3.3 together with the following lemma.

Lemma 3.5 *Let $S = (S_{v,v})$ be the diagonal matrix indexed by the crossings of D with coefficients*

$$S_{v,v} = \frac{-4 \operatorname{sgn} v}{(t_j - t_j^{-1})(t_k - t_k^{-1})},$$

where j and k are the colors of the two strands meeting at v . Then, we have

$$\tau_D(t^2) = K^T S K.$$

We start by proving Corollary 1.5, before addressing the proof of Lemma 3.5.

Proof of Corollary 1.5 By Lemma 3.5, we have $\tilde{\tau}_D(t^2) = \tilde{K}^T S \tilde{K}$, yielding the equality

$$(\det \tilde{K})^2 = \det S^{-1} \det \tilde{\tau}_D(t^2).$$

Since

$$\det S^{-1} = \prod_v (-\operatorname{sgn} v) \left(\frac{1}{2}(t_j - t_j^{-1})\right) \left(\frac{1}{2}(t_k - t_k^{-1})\right),$$

Proposition 3.3 implies that $(\det \tilde{K})^2 = (t_1 - t_1^{-1})^2 \nabla_L^2(t_1, \dots, t_\mu)$, and Corollary 1.5 follows. \square

Proof of Lemma 3.5 Recall that $K = (K_{v,f})$ is a matrix with rows indexed by the crossings of D and columns indexed by the regions of D . Let us fix two regions f and g of D . By definition, the corresponding coefficient of $K^T S K$ is

$$(16) \quad (K^T S K)_{f,g} = \sum_v \frac{-4 \operatorname{sgn} v}{(t_j - t_j^{-1})(t_k - t_k^{-1})} K_{v,f} K_{v,g},$$

while the corresponding coefficient of $\tau_D(t^2)$ is

$$(17) \quad (\tau_D(t^2))_{f,g} = \sum_v \frac{-4 \operatorname{sgn} v}{(t_j - t_j^{-1})(t_k - t_k^{-1})} (\tau_v(t^2))_{f,g}.$$

In both cases, the sum is over all crossings of D (and j, k denote the colors of the strands crossing at v), but the only nonzero contributions come from the crossings adjacent to both f and g .

Comparing the labels of Figure 2 evaluated at $x_j = \frac{1}{2}(t_j + t_j^{-1})$ and $x_{jk} = \frac{1}{2}(t_j t_k + t_j^{-1} t_k^{-1})$ with the labels of Figure 3, one notices an interesting relation. To state it precisely, let $\mathbb{Q}(t)$ denote the field of fractions of $\mathbb{Z}[t_1^{\pm 1}, \dots, t_\mu^{\pm 1}]$, and let $\varphi: \mathbb{Q}(t) \rightarrow \mathbb{Q}(t)$ be the involution induced by $t_i \mapsto t_i^{-1}$ for all i . We claim that the following equality holds:

$$(18) \quad (\tau_v(t^2))_{f,g} = \frac{1}{2}(K_{v,f} K_{v,g} + \varphi(K_{v,f} K_{v,g})).$$

The proof of this claim is divided into three cases, depending on the relative positions of the regions f and g . Let us first assume that f and g are two different regions of the same checkerboard color. In such a case, we have $K_{v,f} K_{v,g} = 1 = (\tau_v(t^2))_{f,g}$ for each crossing v incident to both f and g , so (18) holds. Let us now assume that f and g are regions with different checkerboard colors, meeting at a crossing v with strands of colors j and k . If f and g are adjacent to the strand of color j (resp. k), we get $K_{v,f} K_{v,g} = t_k^{\pm 1}$ (resp. $t_j^{\pm 1}$). Since the coefficient of $\tau_v(t^2)$ is $x_k = \frac{1}{2}(t_k + t_k^{-1})$ (resp. $x_j = \frac{1}{2}(t_j + t_j^{-1})$), (18) holds in this case as well. Finally, let us assume that $f = g$. For a crossing v incident to f , we get either $K_{v,f}^2 = (t_j t_k)^{\pm 1}$ or $K_{v,f}^2 = (t_j^{-1} t_k)^{\pm 1}$, depending on the position of f around v . Similarly, the corresponding coefficient of $\tau_v(t^2)$ is either $x_{jk} = \frac{1}{2}(t_j t_k + t_j^{-1} t_k^{-1})$ or $2x_j x_k - x_{jk} = \frac{1}{2}(t_j t_k^{-1} + t_j^{-1} t_k)$, respectively. This concludes the proof of (18).

The equations (16), (17) and (18) immediately imply the equality

$$\tau_D(t^2) = \frac{1}{2}(K^T S K + \varphi(K^T S K)),$$

where φ is applied to matrices coefficientwise. To conclude the proof of Lemma 3.5, it remains to check that $\varphi(K^T S K) = K^T S K$. This fact being surprisingly technical, we make it the object of a final separate lemma. □

Lemma 3.6 *Let $\mathbb{Q}(t)$ denote the field of fractions of $\mathbb{Z}[t_1^{\pm 1}, \dots, t_\mu^{\pm 1}]$, and let $\varphi: \mathbb{Q}(t) \rightarrow \mathbb{Q}(t)$ be the involution induced by $t_i \mapsto t_i^{-1}$ for all i . Then, we have the equality $\varphi(K^T S K) = K^T S K$.*

Proof We have to show that, for any two regions f and g of D , the coefficient

$$(K^T S K)_{f,g} = \sum_v \frac{-4 \operatorname{sgn} v}{(t_j - t_j^{-1})(t_k - t_k^{-1})} K_{v,f} K_{v,g}$$

is invariant under φ , where the sum is taken over all crossings adjacent to both f and g . We will consider several cases, according to the relative positions of f and g with respect to the crossings.

First of all, if f and g are two regions of the same checkerboard color, each common crossing v contributes a term $-4 \operatorname{sgn} v / ((t_j - t_j^{-1})(t_k - t_k^{-1}))$ to the coefficient $(K^T S K)_{a,b}$. Since all these terms are invariant under φ , this case is checked.



Figure 10: The conventions in the proof of Lemma 3.6.

Next, suppose that f and g have different checkerboard colors. Each edge of D adjacent to both regions gives two contributions to the sum, one for each crossing adjacent to the edge. So, let us consider a common edge with endpoints v and v' , and suppose without loss of generality that the colors and orientations of the strands are as in Figure 10 (left). The two contributions sum up to

$$\frac{-4st_j^{-s}}{(t_i - t_i^{-1})(t_j - t_j^{-1})} + \frac{-4s't_k^{s'}}{(t_i - t_i^{-1})(t_k - t_k^{-1})},$$

where $s = \text{sgn } v$ and $s' = \text{sgn } v'$. Proving that the term displayed above is invariant under φ is clearly equivalent to showing that

$$G := st_j^{-s}(t_k - t_k^{-1}) + s't_k^{s'}(t_j - t_j^{-1})$$

satisfies $\varphi(G) = -G$. Expanding the products and denoting by χ the characteristic function, one checks that G is equal to

$$(t_j t_k - t_j^{-1} t_k^{-1})(\chi_{s'=1} - \chi_{s=-1}) + (t_j t_k^{-1} - t_j^{-1} t_k)(\chi_{s=-1} - \chi_{s'=1}),$$

which is clearly antisymmetric, thus finishing this case.

Finally, let us consider the diagonal coefficient corresponding to a region f . Suppose that, when moving around the boundary of f counterclockwise, one encounters n crossings v_1, \dots, v_n of respective signs s_1, \dots, s_n . (It can happen that f abuts the same crossing from two sides, but since the corresponding labels are added, our computations remain valid in this case.) Let us also number the edges of the boundary from 1 to n as in Figure 10 (right). To each edge, we assign a sign $\varepsilon_i \in \{\pm 1\}$, where $\varepsilon_i = 1$ if the edge i is oriented coherently with the counterclockwise orientation of the boundary of f , and $\varepsilon_i = -1$ otherwise. Without loss of generality, we can assume that all the edges have different colors, that we also denote by $1, \dots, n$; in the general case, if two colors coincide, one simply needs to identify the corresponding variables in the following computations, a transformation which does not affect the symmetry.

With these notations and the help of Figure 3, one computes

$$(K^T SK)_{f,f} = \sum_{i=1}^n \frac{-4s_i(t_i^{\varepsilon_{i+1}} t_{i+1}^{-\varepsilon_i})^{s_i}}{(t_i - t_i^{-1})(t_{i+1} - t_{i+1}^{-1})}.$$

As before, proving that this coefficient is invariant under φ is equivalent to showing that

$$G := \prod_{j=1}^n (t_j - t_j^{-1}) \sum_{i=1}^n \frac{s_i (t_i^{\varepsilon_{i+1}} t_{i+1}^{-\varepsilon_i})^{s_i}}{(t_i - t_i^{-1})(t_{i+1} - t_{i+1}^{-1})}$$

satisfies $\varphi(G) = (-1)^n G$. Expanding as a sum of monomials, we obtain

$$\begin{aligned} G &= \sum_{i=1}^n \left(\prod_{j \neq i, i+1} (t_j - t_j^{-1}) \right) s_i (t_i^{\varepsilon_{i+1}} t_{i+1}^{-\varepsilon_i})^{s_i} = \sum_{i=1}^n \sum_{\alpha \in \{\pm 1\}^{n-2}} \left(\prod_{j \neq i, i+1} \alpha_j t_j^{\alpha_j} \right) s_i (t_i^{\varepsilon_{i+1}} t_{i+1}^{-\varepsilon_i})^{s_i} \\ &= \sum_{\beta \in \{\pm 1\}^n} c_\beta t_1^{\beta_1} \cdots t_n^{\beta_n} \end{aligned}$$

for some coefficient c_β . To compute these coefficients explicitly, let us define for each $\beta \in \{\pm 1\}^n$ the (possibly empty) set of indices $I_\beta = \{i \in \{1, \dots, n\} \mid \beta_i = \varepsilon_{i+1} s_i, \beta_{i+1} = -\varepsilon_i s_i\}$. We then have

$$c_\beta = \sum_{i \in I_\beta} \beta_1 \cdots \beta_{i-1} s_i \beta_i \beta_{i+1} \cdots \beta_n = \sum_{i \in I_\beta} s_i \beta_i \beta_{i+1} (\beta_1 \cdots \beta_n) = \beta_1 \cdots \beta_n \sum_{i \in I_\beta} s_i \beta_i \beta_{i+1} = \beta_1 \cdots \beta_n d_\beta,$$

with $d_\beta = \sum_{i \in I_\beta} s_i \beta_i \beta_{i+1}$. The desired equality $\varphi(G) = (-1)^n G$ is equivalent to $c_{-\beta} = (-1)^n c_\beta$ for all $\beta \in \{\pm 1\}^n$, which in turns is equivalent to $d_{-\beta} = d_\beta$.

Therefore, we are left with the proof of the equality $d_{-\beta} = d_\beta$ for all $\beta \in \{\pm 1\}^n$. Given any such β and any index $i \in \{1, \dots, n\}$, define $\tilde{\beta}$ by $\tilde{\beta}_i = -\beta_i$ and $\tilde{\beta}_j = \beta_j$ for $j \neq i$. A straightforward but slightly cumbersome computation yields

$$d_\beta - d_{\tilde{\beta}} = \begin{cases} -\varepsilon_i \beta_i & \text{if } (\beta_{i-1}, \beta_{i+1}) = (-\varepsilon_i s_{i-1}, -\varepsilon_i s_i), \\ \varepsilon_i \beta_i & \text{if } (\beta_{i-1}, \beta_{i+1}) = (\varepsilon_i s_{i-1}, \varepsilon_i s_i), \\ 0 & \text{otherwise.} \end{cases}$$

This expression is invariant if we replace β by $-\beta$. It thus follows that, for any two $\beta, \beta' \in \{\pm 1\}^n$, we have $d_\beta - d_{\beta'} = d_{-\beta} - d_{-\beta'}$. To prove the equality $d_{-\beta} = d_\beta$ for all β , we therefore only need to check it for a single β . Taking $\beta = (1, \dots, 1)$, we get

$$d_\beta - d_{-\beta} = \sum_{i: (\varepsilon_i, \varepsilon_{i+1}) = (-s_i, s_i)} s_i - \sum_{i: (\varepsilon_i, \varepsilon_{i+1}) = (s_i, -s_i)} s_i = \sum_{i: \varepsilon_i \neq \varepsilon_{i+1}} \varepsilon_{i+1} = 0,$$

since there is an even number of crossings at which ε_i changes sign, going from 1 to -1 in exactly half of the cases and from -1 to 1 in the others. □

3.4 The Alexander module

We conclude this article with a slightly informal discussion on yet another abelian link invariant, namely the Alexander module (recall its definition from Section 2.3).

The question we address is whether it is possible to obtain a presentation of (the square of) the Alexander module \mathcal{A}_L of a μ -colored link L from the matrix $\tilde{\tau}_D(x)$ associated to a colored diagram D for L . As we will see, the answer is positive in the case $\mu = 1$, but not in general.

First, recall that \mathcal{A}_L does not admit a square presentation matrix over $\Lambda = \mathbb{Z}[t_1^{\pm 1}, \dots, t_\mu^{\pm 1}]$ if $\Delta_L \neq 0$ and $\mu \geq 4$ [9]. For this reason alone, there is no hope of answering the above question positively in general. However, the module \mathcal{A}_L does admit a square presentation matrix over the localized ring

$$\Lambda_S := \mathbb{Z}[t_1^{\pm 1}, \dots, t_\mu^{\pm 1}, (t_1 - 1)^{-1}, \dots, (t_\mu - 1)^{-1}].$$

By Corollary 3.6 of [4], the generalized Seifert matrices can be used to compute such a square presentation matrix. Therefore, it is natural to hope that the strategy developed in this work could be applied to this invariant as well. However, since the change of variables $2x_j = t_j^{1/2} + t_j^{-1/2}$ makes use of fractional powers of the variables, we will need to work over the slightly larger ring

$$\Lambda'_S := \mathbb{Z}[t_1^{\pm 1/2}, \dots, t_\mu^{\pm 1/2}, (t_1 - 1)^{-1}, \dots, (t_\mu - 1)^{-1}].$$

In the case $\mu = 1$, this program can be carried out, yielding the following result. Let D be a connected diagram for an oriented link L . As one easily checks, the coefficients of the matrix $\tau_D(x)$ are polynomials in $2x =: y$. Let \mathcal{M}_D denote the $\mathbb{Z}[y]$ -module presented by the matrix $\tilde{\tau}_D(y)$. Then, we have an isomorphism of Λ'_S -modules

$$\mathcal{M}_D \otimes_{\mathbb{Z}[y]} \Lambda'_S \simeq \mathcal{A}_L^{\oplus 2} \otimes_{\Lambda} \Lambda'_S,$$

where $\Lambda'_S = \mathbb{Z}[t^{\pm 1/2}, (t - 1)^{-1}]$ is a $\mathbb{Z}[y]$ -module via the ring homomorphism $\mathbb{Z}[y] \rightarrow \Lambda'_S$ mapping y to $t^{1/2} + t^{-1/2}$, and a Λ -module via the natural inclusion $\Lambda \rightarrow \Lambda'_S$. Less formally, one can say that the matrix $\tilde{\tau}_D(y)$ is a presentation matrix of $\mathcal{A}_L^{\oplus 2}$ over Λ'_S via the substitution $y = t^{1/2} + t^{-1/2}$. If $L = K$ is a knot, then the multiplication by $(t - 1)$ is invertible in \mathcal{A}_K . As a consequence, the matrix $\tilde{\tau}_D(y)$ presents $\mathcal{A}_K^{\oplus 2}$ over the ring $\mathbb{Z}[t^{\pm 1/2}]$.

Unfortunately, these results do not carry over to the case $\mu > 1$. Indeed, let D be a μ -colored diagram for a μ -colored link L , and assume that each pair of colors meet in D . Then, using Corollary 3.6 of [4], it is possible to prove that the matrix $\tilde{\tau}_D(x)$ presents the Alexander module of $L \#_1 rL$ over the ring

$$\mathbb{Z}[\frac{1}{2}, t_1^{\pm 1/2}, \dots, t_\mu^{\pm 1/2}, (t_1 - 1)^{-1}, \dots, (t_\mu - 1)^{-1}],$$

under the substitutions $x_j = \frac{1}{2}(t_j + t_j^{-1})$ and $x_{jk} = \frac{1}{2}(t_j t_k + t_j^{-1} t_k^{-1})$. However, the isomorphism

$$\mathcal{A}_{L\#_1 L'} \simeq \mathcal{A}_L \oplus \mathcal{A}_{L'}$$

that we used in the case $\mu = 1$ is no longer valid in general for $\mu > 1$. In other words, the additivity under connected sum enjoyed by the other abelian invariants considered in this work does not extend to the Alexander module in general.

References

- [1] **J W Alexander**, *Topological invariants of knots and links*, Trans. Amer. Math. Soc. 30 (1928) 275–306 MR
- [2] **D Cimasoni**, *A geometric construction of the Conway potential function*, Comment. Math. Helv. 79 (2004) 124–146 MR

- [3] **D Cimasoni, L Ferretti**, *On the Kashaev signature conjecture*, *Fund. Math.* 266 (2024) 275–287 MR
- [4] **D Cimasoni, V Florens**, *Generalized Seifert surfaces and signatures of colored links*, *Trans. Amer. Math. Soc.* 360 (2008) 1223–1264 MR
- [5] **A Conway**, *The Levine–Tristram signature: a survey*, from “2019–20 MATRIX annals” (DR Wood, J de Gier, CE Praeger, T Tao, editors), *MATRIX Book Ser. 4*, Springer, Cham (2021) 31–56 MR
- [6] **A Conway, M Nagel, E Toffoli**, *Multivariable signatures, genus bounds, and 0.5-solvable cobordisms*, *Michigan Math. J.* 69 (2020) 381–427 MR
- [7] **JH Conway**, *An enumeration of knots and links, and some of their algebraic properties*, from “Computational Problems in Abstract Algebra” (J Leech, editor), Pergamon (1970) 329–358 MR
- [8] **D Cooper**, *The universal abelian cover of a link*, from “Low-dimensional topology” (R Brown, TL Thickstun, editors), *London Math. Soc. Lecture Note Ser. 48*, Cambridge Univ. Press (1982) 51–66 MR
- [9] **RH Crowell, D Strauss**, *On the elementary ideals of link modules*, *Trans. Amer. Math. Soc.* 142 (1969) 93–109 MR
- [10] **CW Davis, T Martin, C Otto**, *Moves relating C -complexes: a correction to Cimasoni’s “A geometric construction of the Conway potential function”*, *Topology Appl.* 302 (2021) art. id. 107799 MR
- [11] **S Friedl, C Kausik, JP Quintanilha**, *An algorithm to calculate generalized Seifert matrices*, *J. Knot Theory Ramifications* 31 (2022) art. id. 2250068 MR
- [12] **R Hartley**, *The Conway potential function for links*, *Comment. Math. Helv.* 58 (1983) 365–378 MR
- [13] **R Kashaev**, *On symmetric matrices associated with oriented link diagrams*, from “Topology and geometry — a collection of essays dedicated to Vladimir G Turaev” (A Papadopoulos, editor), *IRMA Lect. Math. Theor. Phys.* 33, Eur. Math. Soc., Zürich (2021) 131–145 MR
- [14] **LH Kauffman**, *The Conway polynomial*, *Topology* 20 (1981) 101–108 MR
- [15] **LH Kauffman**, *Formal knot theory*, *Mathematical Notes* 30, Princeton Univ. Press (1983) MR
- [16] **J Liu**, *A proof of the Kashaev signature conjecture*, preprint (2023) arXiv 2311.01923
- [17] **K Murasugi**, *On the signature of links*, *Topology* 9 (1970) 283–298 MR
- [18] **M Sato**, *On the Conway potential function introduced by Kauffman*, preprint (2011) arXiv 1103.2449
- [19] **CB Zibrowius**, *On a Heegaard Floer theory for tangles*, PhD thesis, University of Cambridge (2017) Available at <https://doi.org/10.17863/CAM.8706>
- [20] **CB Zibrowius**, *Kauffman states and Heegaard diagrams for tangles*, *Algebr. Geom. Topol.* 19 (2019) 2233–2282 MR

Section de mathématiques, Université de Genève
Genève, Switzerland

Section de mathématiques, Université de Genève
Genève, Switzerland

Department of Mathematics, University of Toronto
Toronto, ON, Canada

david.cimasoni@unige.ch, livio.ferretti@unige.ch, jessliu@math.toronto.edu

Received: 27 May 2024 Revised: 4 October 2024

ALGEBRAIC & GEOMETRIC TOPOLOGY

msp.org/agt

EDITORS

PRINCIPAL ACADEMIC EDITORS

John Etnyre
etnyre@math.gatech.edu
Georgia Institute of Technology

Kathryn Hess
kathryn.hess@epfl.ch
École Polytechnique Fédérale de Lausanne

BOARD OF EDITORS

Julie Bergner	University of Virginia jeb2md@eservices.virginia.edu	Thomas Koberda	University of Virginia thomas.koberda@virginia.edu
Steven Boyer	Université du Québec à Montréal cohf@math.rochester.edu	Markus Land	LMU München markus.land@math.lmu.de
Tara E Brendle	University of Glasgow tara.brendle@glasgow.ac.uk	Christine Lescop	Université Joseph Fourier lescop@ujf-grenoble.fr
Indira Chatterji	CNRS & Univ. Côte d'Azur (Nice) indra.chatterji@math.cnrs.fr	Norihiko Minami	Yamato University minami.norihiko@yamato-u.ac.jp
Octav Cornea	Université de Montreal cornea@dms.umontreal.ca	Andrés Navas	Universidad de Santiago de Chile andres.navas@usach.cl
Alexander Dranishnikov	University of Florida dranish@math.ufl.edu	Jessica S Purcell	Monash University jessica.purcell@monash.edu
Tobias Ekholm	Uppsala University, Sweden tobias.ekholm@math.uu.se	Birgit Richter	Universität Hamburg birgit.richter@uni-hamburg.de
Mario Eudave-Muñoz	Univ. Nacional Autónoma de México mario@matem.unam.mx	Jérôme Scherer	École Polytech. Féd. de Lausanne jerome.scherer@epfl.ch
David Futер	Temple University dfuter@temple.edu	Vesna Stojanoska	Univ. of Illinois at Urbana-Champaign vesna@illinois.edu
John Greenlees	University of Warwick john.greenlees@warwick.ac.uk	Zoltán Szabó	Princeton University szabo@math.princeton.edu
Matthew Hedden	Michigan State University mhedden@math.msu.edu	Maggy Tomova	University of Iowa maggy-tomova@uiowa.edu
Kristen Hendricks	Rutgers University kristen.hendricks@rutgers.edu	Daniel T Wise	McGill University, Canada daniel.wise@mcgill.ca
Hans-Werner Henn	Université Louis Pasteur henn@math.u-strasbg.fr	Lior Yanovski	Hebrew University of Jerusalem lior.yanovski@gmail.com
Daniel Isaksen	Wayne State University isaksen@math.wayne.edu		


See inside back cover or msp.org/agt for submission instructions.

The subscription price for 2025 is US \$760/year for the electronic version, and \$1110/year (+\$75, if shipping outside the US) for print and electronic. Subscriptions, requests for back issues and changes of subscriber address should be sent to MSP. Algebraic & Geometric Topology is indexed by Mathematical Reviews, Zentralblatt MATH, Current Mathematical Publications and the Science Citation Index.

Algebraic & Geometric Topology (ISSN 1472-2747 printed, 1472-2739 electronic) is published 9 times per year and continuously online, by Mathematical Sciences Publishers, 2000 Allston Way # 59, Berkeley, CA 94701-4004. Periodical rate postage paid at Oakland, CA 94615-9651, and additional mailing offices. POSTMASTER: send address changes to Mathematical Sciences Publishers, 2000 Allston Way # 59, Berkeley, CA 94701-4004.

AGT peer review and production are managed by EditFlow[®] from MSP.

PUBLISHED BY

 **mathematical sciences publishers**
nonprofit scientific publishing

<https://msp.org/>

© 2025 Mathematical Sciences Publishers

ALGEBRAIC & GEOMETRIC TOPOLOGY

Volume 25 Issue 8 (pages 4437–5174) 2025

Hierarchies for relatively hyperbolic virtually special groups	4437
EDUARD EINSTEIN	
Intersection norms on surfaces and Birkhoff sections for geodesic flows	4499
MARCOS COSSARINI and PIERRE DEHORNOY	
Thin knots and the cabling conjecture	4547
ROBERT DEYESO III	
Linear linkless embeddings: proof of a conjecture by Sachs	4585
LYNN STANFIELD	
Constructing rational homology 3-spheres that bound rational homology 4-balls	4599
LISA LOKTEVA	
Homological stability for the ribbon Higman–Thompson groups	4633
RACHEL SKIPPER and XIAOLEI WU	
A group-theoretic framework for low-dimensional topology, or: how not to study low-dimensional topology?	4667
SARAH BLACKWELL, ROBION KIRBY, MICHAEL KLUG, VINCENT LONGO and BENJAMIN RUPPIK	
Classification of genus-two surfaces in S^3	4719
FILIPPO BARONI	
Meromorphic projective structures: signed spaces, grafting and monodromy	4787
SPANDAN GHOSH and SUBHOJOY GUPTA	
A new twist on modular links from an old perspective	4827
KHANH LE	
Flat fully augmented links are determined by their complements	4839
CHRISTIAN MILLICHAP and ROLLAND TRAPP	
BNSR-invariants of surface Houghton groups	4897
NOAH TORGERSON and JEREMY WEST	
Topological symmetry groups of the generalized Petersen graphs	4921
ANGELYNN ÁLVAREZ, ERICA FLAPAN, MARK HUNNELL, JOHN HUTCHENS, EMILLE LAWRENCE, PAUL LEWIS, CANDICE PRICE and RUTH VANDERPOOL	
Crushing surfaces of positive genus	4949
BENJAMIN A BURTON, THIAGO DE PAIVA, ALEXANDER HE and CONNIE ON YU HUI	
Annular links from Thompson’s group T	5013
LOUISA LILES	
Realizing pairs of multicurves as cylinders on translation surfaces	5031
JULIET AYGUN, JANET BARKDOLL, AARON CALDERON, JENAVIE LORMAN and THEODORE SANDSTROM	
Involutive Khovanov homology and equivariant knots	5059
TAKETO SANO	
A diagrammatic computation of abelian link invariants	5113
DAVID CIMASONI, LIVIO FERRETTI and JESSICA LIU	
Equivariant double-slice genus, stabilization, and equivariant stabilization	5137
MALCOLM GABBARD	
Coarse and bi-Lipschitz embeddability of subspaces of the Gromov–Hausdorff space into Hilbert spaces	5153
NICOLÒ ZAVA	