

*Pacific
Journal of
Mathematics*

KNOTTING TRIVIAL KNOTS AND RESULTING KNOT TYPES

KIMHIKO MOTEGI

Volume 161 No. 2

December 1993

KNOTTING TRIVIAL KNOTS AND RESULTING KNOT TYPES

KIMHIKO MOTEGI

Let (V, K) be a pattern (i.e. V is a standardly embedded solid torus in oriented S^3 and K is a knot in V) and f an orientation preserving embedding from V into S^3 such that $f(V)$ is knotted.

In this paper answers to the following questions will be given depending upon whether the winding number of K_2 in V is zero or not.

(1) Suppose that K_1 is unknotted and K_2 is knotted in S^3 . Can $f(K_1)$ be ambient isotopic to $f(K_2)$ in S^3 for some embedding $f: V \hookrightarrow S^3$?

(2) Suppose that K_1 and K_2 are both unknotted in S^3 . How are (V, K_1) and (V, K_2) related if $f(K_1)$ is ambient isotopic to $f(K_2)$ in S^3 for some embedding $f: V \hookrightarrow S^3$?

1. Introduction. Let K be a knot in S^3 , which is contained in a standardly embedded solid torus V ($\subset S^3$). Assume that K is not contained in a 3-ball in V . Let f be an orientation preserving embedding from V into S^3 such that $f(C)$ is knotted in S^3 , here C denotes a core of V . Then we get a new knot $f(K)$ in S^3 called a satellite knot with a companion knot $f(C)$. The knot K is called a preimage knot and we call the pair (V, K) a pattern (see Figure 1 on the next page).

Throughout this paper for an embedding f from V into S^3 , we assume that it is orientation preserving and $f(C)$ is knotted in S^3 .

We concern ourselves with the following questions.

(1) Suppose that K_1 is unknotted and K_2 is knotted in S^3 . Can $f(K_1)$ be ambient isotopic to $f(K_2)$ in S^3 for some embedding $f: V \hookrightarrow S^3$?

(2) Suppose that K_1 and K_2 are both unknotted in S^3 . How are (V, K_1) and (V, K_2) related if $f(K_1)$ is ambient isotopic to $f(K_2)$ in S^3 for some embedding $f: V \hookrightarrow S^3$?

For two knots K_1 and K_2 , we write $K_1 \cong K_2$ provided that there exists an orientation preserving self-homeomorphism of S^3 carrying K_1 to K_2 (or equivalently, K_1 and K_2 are ambient isotopic in S^3). For two patterns (V, K_1) and (V, K_2) , if there exists an orientation preserving self-homeomorphism h of V sending *longitude* to

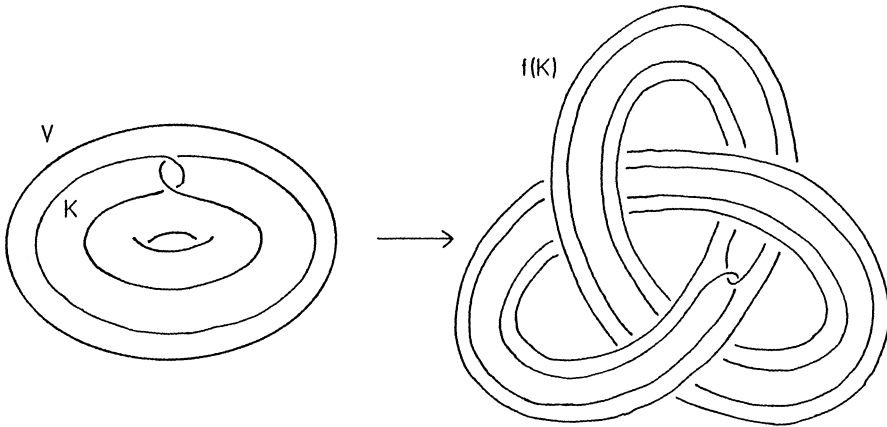


FIGURE 1

\pm longitude which satisfies $h(K_1) = K_2$, then we write $(V, K_1) \sim (V, K_2)$. In addition if the homeomorphism h sends longitude to longitude, then we write $(V, K_1) \cong (V, K_2)$. It is known that $(V, K_1) \cong (V, K_2)$ if and only if K_1 and K_2 are ambient isotopic in V . Throughout this paper longitude means preferred longitude.

The wrapping number of K in V —the minimal geometric intersection number of K with a meridian disk in V —is denoted by $\text{wrap}_V(K)$, and the winding number of K in V —the algebraic intersection number of K with a meridian disk in V —is denoted by $\text{wind}_V(K)$. (We may assume $\text{wind}_V(K) \geq 0$ by considering an appropriate orientation of K .)

Now our main result is stated as follows.

THEOREM 1.1. *Let (V, K_i) ($i = 1, 2$) be a pattern. Suppose that K_1 is unknotted in S^3 and $\text{wind}_V(K_2) \neq 0$. If $f(K_1) \cong f(K_2)$ in S^3 for some embedding f from V into S^3 , then $(V, K_1) \sim (V, K_2)$ holds.*

REMARK 1.2. (1) In this theorem the condition $\text{wind}_V(K_2) \neq 0$ is essential. The example below (Figure 2) demonstrates the necessity of such a condition.

In this example K_1 is unknotted in S^3 and K_2 is knotted (and hence $(V, K_1) \not\sim (V, K_2)$), but $\text{wind}_V(K_2) = 0$. From them, we can obtain the same knot $f(K_1) \cong f(K_2)$.

The modification to recognize that $f(K_1) \cong f(K_2)$ is given by Figure 3.

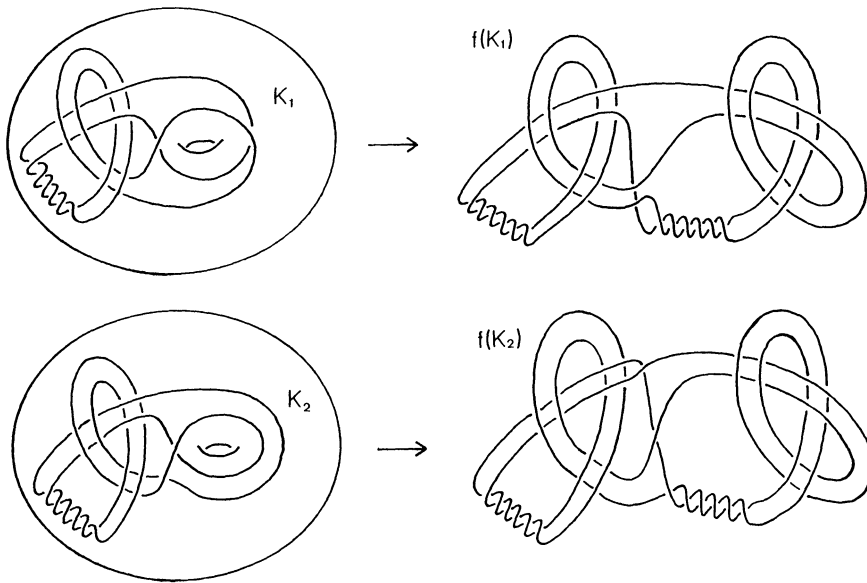


FIGURE 2

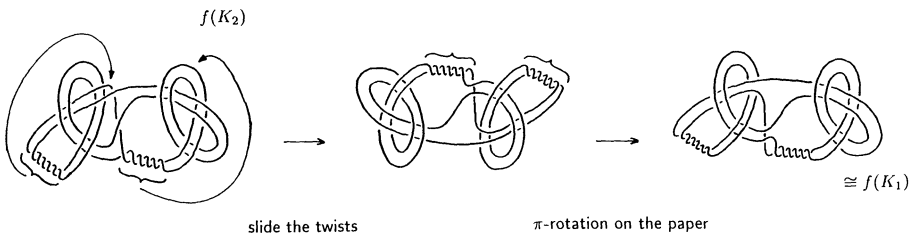


FIGURE 3

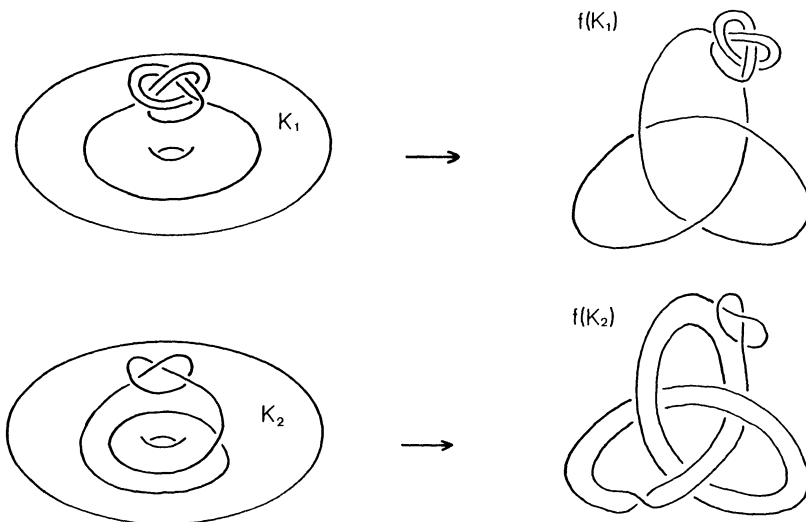


FIGURE 4

(2) If K_1 is knotted, even when $\text{wind}_V(K_2) \neq 0$, it is easy to construct the example such that $(V, K_1) \not\sim (V, K_2)$ but $f(K_1) \cong f(K_2)$ in S^3 (see Figure 4).

As consequences of the Theorem 1.1, we have Corollary 2.6 and Theorem 3.1. By these results together with Remark 1.2 and Theorem 3.3, we can answer the above questions depending upon whether $\text{wind}_V(K_2) = 0$ or not.

Throughout this paper $N(X)$, ∂X and $\text{int } X$ denote the tubular neighborhood of X , the boundary of X and the interior of X respectively.

2. Isotopy between satellite knots and equivalence of patterns. To prove Theorem 1.1 we prepare some lemmas and give a necessary condition for a pattern (V, K) so that K is unknotted in S^3 .

The next lemma is well known and we omit the proof here (see [7]).

LEMMA 2.1. *Let W be a knotted solid torus in S^3 and K a knot in W with $\text{wrap}_W(K) \neq 0$. Then K is knotted in S^3 .*

Consider a nontrivial knot exterior E (i.e. E is homeomorphic to $S^3 - \text{int } N(k)$ for some nontrivial knot k in S^3) embedded in V . Since ∂E is compressible in $V - \text{int } N(K)$, otherwise $V = (V - \text{int } E) \cup E$ has an incompressible torus ∂E , there exists an embedded disk D in $V - \text{int } E$ such that ∂D is essential in $\partial(V - \text{int } E) = \partial E$. Thus D is a meridian disk for the solid torus $W = S^3 - \text{int } E$ and is contained in V . We call the disk D a meridian disk for E in V . The following lemma is a straightforward consequence of Lemma 2.1.

LEMMA 2.2. *Let (V, K) be a pattern such that K is unknotted in S^3 and E a nontrivial knot exterior embedded in $V - K$. Then the algebraic intersection number of K and a meridian disk for E in V is zero (see Figure 5).*

Now we shall prove Theorem 1.1.

Proof of Theorem 1.1. Suppose that $f(K_1) \cong f(K_2)$ in S^3 for two patterns (V, K_1) and (V, K_2) . Then there is an orientation preserving homeomorphism h of S^3 carrying $f(K_1)$ to $f(K_2)$. It suffices to show that by an isotopy of S^3 which leaves $f(K_2) = h(f(K_1))$ fixed, we can modify the homeomorphism h so that $h(S^3 - \text{int } f(V)) = S^3 - \text{int } f(V)$. To do this we need the next lemma, which was proved by H. Schubert in [8], but since we rely heavily on this theorem, we give a proof here using torus decompositions.

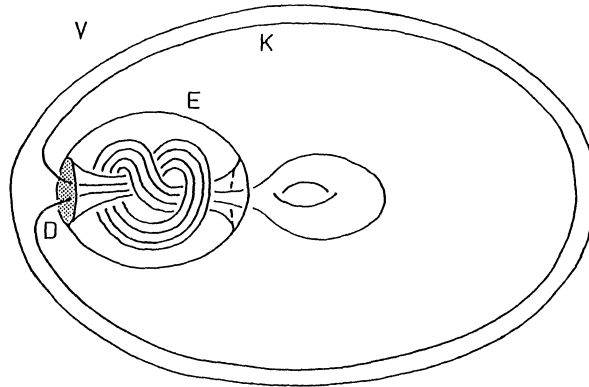


FIGURE 5

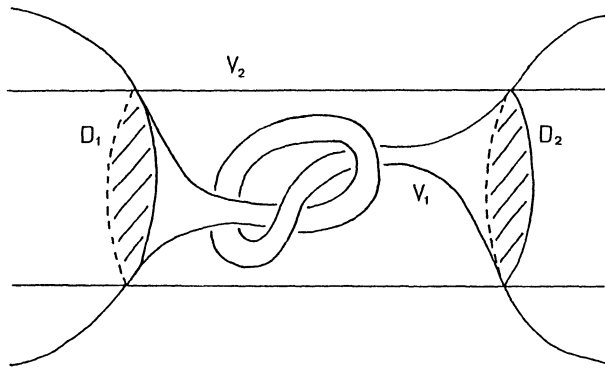


FIGURE 6

LEMMA 2.3 ([8]). Let V_i ($i = 1, 2$) be a knotted solid torus in S^3 which contains a knot K with $\text{wrap}_{V_i}(K) \neq 0$. Then by an ambient isotopy of S^3 which leaves K fixed, V_2 can be deformed so that one of the following holds.

- (1) $\partial V_1 \cap \partial V_2 = \emptyset$
- (2) there exist meridian disks D_1 and D_2 of both V_1 and V_2 such that the closure of one component of $V_1 - \bigcup_{i=1}^2 D_i$ is a knotted 3-ball in the closure of some component of $V_2 - \bigcup_{i=1}^2 D_i$ (see Figure 6).

Proof of Lemma 2.3. If $V_i - \text{int } N(K)$ is homeomorphic to $S^1 \times S^1 \times I$ for $i = 1$ or 2 , then K is a core of V_i and we can deform V_2 so that (1) in Lemma 2.3 holds. Now we assume that $V_i - \text{int } N(K)$ is not homeomorphic to $S^1 \times S^1 \times I$ for $i = 1, 2$. Consider the torus decomposition of $S^3 - \text{int } V_i$ and $V_i - \text{int } N(K)$ ($i = 1, 2$) in the sense of Jaco-Shalen [4] and Johannson [5]. Then each piece is Seifert fibred or admits a complete hyperbolic structure of finite volume in its interior by Thurston's uniformization theorem [6]. Moreover, by

Theorem VI 3.4 in [4], the Seifert part is one of torus knot spaces, cable spaces and composing spaces. Let M_i be the piece in $S^3 - \text{int } V_i$ which contains $\partial V_i (= \partial(S^3 - \text{int } V_i))$ and N_i the piece in $V_i - \text{int } N(K)$ which contains ∂V_i . We divide into two cases depending upon whether one of ∂V_i ($i = 1, 2$) belongs to the minimal family of tori J_i defining a torus decomposition of $S^3 - \text{int } N(K) = (S^3 - \text{int } V_i) \cup (V_i - \text{int } N(K))$ or not.

Case (A). At least one of ∂V_i ($i = 1, 2$) belongs to J_i ($i = 1, 2$).

In this case, by the uniqueness of the torus decomposition we can deform ∂V_2 so that $\partial V_1 \cap \partial V_2 = \emptyset$ or $\partial V_1 = \partial V_2$. If $\partial V_1 = \partial V_2$, then isotoping ∂V_2 slightly off ∂V_1 in the normal direction so that $\partial V_1 \cap \partial V_2 = \emptyset$. Thus (1) in Lemma 2.3 does hold.

Case (B). ∂V_i ($i = 1, 2$) does not belong to J_i .

Then it turns out that $M_i \cup N_i$ is a composing space in $S^3 - \text{int } N(K) = (S^3 - \text{int } V_i) \cup (V_i - \text{int } N(K))$. By the uniqueness of the torus decomposition, we can isotope $M_2 \cup N_2$ so that $M_2 \cup N_2$ is one of decomposing pieces defined by J_1 . (Notationally we do not distinguish the original $M_2 \cup N_2$ and isotoped $M_2 \cup N_2$.) If $M_2 \cup N_2 \neq M_1 \cup N_1$, then (1) in Lemma 2.3 holds. Now suppose that $M_2 \cup N_2 = M_1 \cup N_1$. We note that ∂V_1 is a saturated torus (i.e. a union of fibres) in the composing space $M_1 \cup N_1$. Since a Seifert fibration of the composing space $M_1 \cup N_1$ is unique up to isotopy, we may modify ∂V_2 so that it is also saturated. Consider the orbit manifold of $M_1 \cup N_1$, which is a disk with holes. The image of ∂V_i in this orbit manifold is an essential circle C_i . If we can modify C_2 so that $C_1 \cap C_2 = \emptyset$, then we can also modify ∂V_2 so that $\partial V_1 \cap \partial V_2 = \emptyset$ and (1) in Lemma 2.3 holds. Assume we can not isotope C_2 so that $C_1 \cap C_2 = \emptyset$. Then isotope C_2 so that the number of points of $C_1 \cap C_2$ is minimal. Let T be the component of $\partial(M_1 \cup N_1)$ separating $\partial N(K)$ and $M_1 \cup N_1$. In S^3 , T bounds a solid torus W containing K , whose meridian coincides with the regular fibre of $M_1 \cup N_1$. In the orbit manifold we can find arcs A_1 and A_2 joining a point in $C_1 \cap C_2$ and the boundary circle C which is the image of T (see Figure 7 (1)).

These arcs A_1 and A_2 are corresponding to saturated annuli \tilde{A}_1 and \tilde{A}_2 . From \tilde{A}_j and meridian disk \tilde{D}_j of W , we can construct a meridian disk $\tilde{A}_j \cup \tilde{D}_j$ of both V_1 and V_2 . Finally consider the boundary circle C' of the orbit manifold depicted in Figure 7 (1), which corresponds to the torus boundary T' . Since T' bounds a

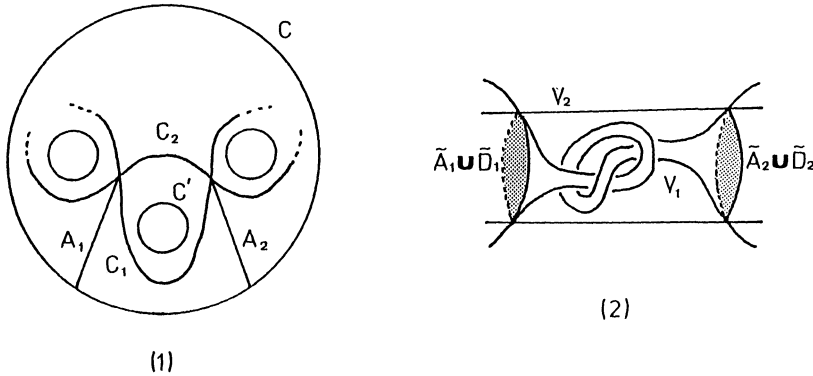


FIGURE 7

nontrivial knot exterior in $V_2 - \text{int } V_1$ (see Figure 7 (2)), we get just a situation for (2) in Lemma 2.3, and this completes the proof. \square

Let us study the relationship between two solid tori $h(f(V))$ and $f(V)$ using Lemma 2.3. By an ambient isotopy of S^3 which leaves $f(K_2) = h(f(K_1))$ fixed we can deform $h(f(V))$ into the position such that either $\partial h(f(V)) \cap \partial f(V) = \emptyset$ or there exist meridian disks D_1 and D_2 of both $f(V)$ and $h(f(V))$ such that one component of the closure of $f(V) - \bigcup_{i=1}^2 D_i$ is a knotted 3-ball in some component of the closure of $h(f(V)) - \bigcup_{i=1}^2 D_i$.

LEMMA 2.4. *We can deform $h(f(V))$ into the position such that $\partial h(f(V)) \cap \partial f(V) = \emptyset$.*

Proof of Lemma 2.4. If not, the second situation in the above occurs. Then we get a solid torus $W' (\supset h(f(K_1)) = f(K_2))$ in $\text{int } h(f(V))$, whose core $C_{W'}$ satisfies $\text{wrap}_{h(f(V))}(C_{W'}) = 1$ and is not a core of $h(f(V))$. It follows that the solid torus V also contains a knotted solid torus $W (\supset K_1)$ in its interior such that $\text{wrap}_V(C_W) = 1$ for the core C_W of W . Since $\text{wrap}_W(K_1) \neq 0$, K_1 cannot be unknotted in S^3 by Lemma 2.1 and this contradicts the assumption. Hence we can deform $h(f(V))$ so that $\partial h(f(V)) \cap \partial f(V) = \emptyset$. \square

Now we have following three possibilities.

- (1) $h(S^3 - \text{int } f(V)) \subset \text{int}(S^3 - \text{int } f(V))$
- (2) $\text{int } h(S^3 - \text{int } f(V)) \supset S^3 - \text{int } f(V)$
- (3) $h(S^3 - \text{int } f(V)) \subset \text{int } f(V)$

In (1) (or (2), resp.), assume $(S^3 - \text{int } f(V)) - \text{int}(h(S^3 - \text{int } f(V)))$ (or $h(S^3 - \text{int } f(V)) - \text{int}(S^3 - \text{int } f(V))$, resp.) is homeomorphic

to $S^1 \times S^1 \times I$. Then by an isotopy which leaves $f(K_2)$ fixed, we may modify h so that $h(S^3 - \text{int } f(V)) = S^3 - \text{int } f(V)$ and also $h(f(V)) = f(V)$ with $h(f(K_1)) = f(K_2)$. For homological reasons, $h(\text{longitude}) = \pm \text{longitude}$. Hence $f^{-1} \circ h \circ f : V \rightarrow V$ is an orientation preserving homeomorphism carrying K_1 to K_2 and longitude to $\pm \text{longitude}$. So we get $(V, K_1) \sim (V, K_2)$.

Let us consider the case where $h(S^3 - \text{int } f(V)) \subset \text{int}(S^3 - \text{int } f(V))$ and $(S^3 - \text{int } f(V)) - \text{int}(h(S^3 - \text{int } f(V)))$ is not homeomorphic to $S^1 \times S^1 \times I$. Then using the homeomorphism $h|_{S^3 - \text{int } f(V)}$ from $S^3 - \text{int } f(V)$ to $h(S^3 - \text{int } f(V))$, we get mutually nonparallel incompressible tori $\{h^n(\partial f(V))\}$ in $S^3 - \text{int } f(V)$ for any positive integer n . This contradicts Haken's finiteness theorem. The similar argument can be applied in the case where $\text{int } h(S^3 - \text{int } f(V)) \supset S^3 - \text{int } f(V)$ and $h(S^3 - \text{int } f(V)) - \text{int}(S^3 - \text{int } f(V))$ is not homeomorphic to $S^1 \times S^1 \times I$, and again we get a contradiction.

Let us consider the case (3). The assumption implies that the nontrivial knot exterior $E = h^{-1}(S^3 - \text{int } f(V))$ is contained in $\text{int } f(V)$. Since $\text{wind}_V(K_2) \neq 0$, we have $\text{wind}_{f(V)}(f(K_2)) \neq 0$ and so we have $\text{wind}_{h^{-1}(f(V))}(h^{-1}(f(K_2))) \neq 0$. It follows that $\text{wind}_{(S^3 - \text{int } E)}(f(K_1))$ is also not zero. On the other hand since K_1 is unknotted in S^3 , by Lemma 2.2, the algebraic intersection number of K_1 and a meridian disk for the nontrivial knot exterior $f^{-1}(E)$ in V must be zero. Hence we get $\text{wind}_{(S^3 - \text{int } E)}(f(K_1)) = 0$. This is a contradiction. \square

In Theorem 1.1, if $f(C)$ is a noninvertible knot, where C is a core of V , then more precisely we have the following.

THEOREM 2.5. *Let (V, K_i) be a pattern. Suppose that K_1 is unknotted in S^3 , and $\text{wind}_V(K_2) \neq 0$. If $f(K_1) \cong f(K_2)$ in S^3 for some embedding f from V into S^3 such that $f(C)$ is noninvertible, then $(V, K_1) \cong (V, K_2)$, that is K_1 and K_2 are ambient isotopic in V .*

Proof. In the proof of Theorem 1.1, we have an orientation preserving homeomorphism h of S^3 satisfying $h(f(V)) = f(V)$ and $h(f(K_1)) = f(K_2)$. For homological reasons, $h(\text{longitude}) = \pm \text{longitude}$. In addition since $f(C)$ is noninvertible, we get $h(\text{longitude}) = \text{longitude}$ (see 3.19. Proposition in [1]). It follows that $f^{-1} \circ h \circ f : V \rightarrow V$ is an orientation preserving homeomorphism carrying K_1 to K_2 and longitude to longitude . Thus we conclude $(V, K_1) \cong (V, K_2)$. \square

As an application of Theorem 1.1, we have the following corollary.

COROLLARY 2.6. *Let (V, K_i) be a pattern. Suppose that K_1 is unknotted and K_2 is knotted in S^3 and $\text{wind}_V(K_2) \neq 0$. Then for any embedding f from V into S^3 , $f(K_1) \not\cong f(K_2)$ in S^3 .*

Proof. If $f(K_1) \cong f(K_2)$ for some embedding f from V into S^3 , then $(V, K_1) \sim (V, K_2)$ must hold by Theorem 1.1. Extending the orientation preserving homeomorphism h of V to that of S^3 , we get $K_1 \cong K_2$. This is a contradiction. \square

Concluding this section, we give the following proposition which is an implicit corollary of Soma’s sum formula for the Gromov invariants [10]. We denote the Gromov invariant of X by $\|X\|$.

PROPOSITION 2.7. *Let (V, K_i) ($i = 1, 2$) be a pattern such that $\|V - \text{int } N(K_1)\| \neq \|V - \text{int } N(K_2)\|$. Then $f(K_1) \not\cong f(K_2)$ for any embedding f from V into S^3 .*

So we see that, with no conditions on K_1 and K_2 , if $f(K_1) \cong f(K_2)$ then the Gromov invariants of their complements in V are the same.

3. Classification of satellite knots constructed from trivial knots. As a special case of Theorem 1.1, we have

THEOREM 3.1. *Let (V, K_i) be a pattern and K_i a trivial knot in S^3 ($i = 1, 2$). Suppose that $\text{wind}_V(K_1) \neq 0$ or $\text{wind}_V(K_2) \neq 0$. If $f(K_1) \cong f(K_2)$ in S^3 for some embedding f from V into S^3 , then $(V, K_1) \sim (V, K_2)$ holds.*

The winding numbers and the wrapping numbers of knots in a solid torus are elementary invariants for them. Particularly for a faithful (i.e. sending *longitude* to *longitude*) embedding $f : V \hookrightarrow S^3$, winding number of K in V has an important role for Alexander polynomial of $f(K)$, as is shown by Seifert’s formula [9] ([1]). However if K is unknotted and $f(C)$ has a trivial Alexander polynomial, then $f(K)$ has also a trivial one independent of $\text{wind}_V(K)$. Moreover when $K_1 \cong K_2$ and $\text{wind}_V(K_1) = \text{wind}_V(K_2)$, $f(K_1)$ and $f(K_2)$ have the same Alexander polynomial.

As a consequence of Theorem 3.1, we have the following result for satellite knots constructed from trivial knots.

COROLLARY 3.2. *Suppose K_i is a trivial knot contained in a standardly embedded solid torus V in S^3 ($i = 1, 2$).*

(1) *If $\text{wind}_V(K_1) \neq \text{wind}_V(K_2)$, then $f(K_1) \not\cong f(K_2)$ in S^3 for any embedding f from V into S^3 .*

(2) *When $\text{wind}_V(K_1) = \text{wind}_V(K_2) \neq 0$, if $\text{wrap}_V(K_1) \neq \text{wrap}_V(K_2)$, then $f(K_1) \not\cong f(K_2)$ in S^3 for any embedding f from V into S^3 .*

In the case $\text{wind}_V(K_1) = \text{wind}_V(K_2) = 0$, we have

THEOREM 3.3. *For any faithful embedding f from V into S^3 (i.e. f sends a longitude of V to a longitude of $f(V)$), there exist patterns (V, K_1) and (V, K_2) such that both K_1 and K_2 are unknotted in S^3 , which satisfy the following properties:*

(1) $\text{wind}_V(K_1) = \text{wind}_V(K_2) = 0$ and $(V, K_1) \not\sim (V, K_2)$.

(2) $f(K_1) \cong f(K_2)$ in S^3 .

Proof. Let us consider a 3-components Brunnian link $L = k \cup L_1 \cup L_2$ depicted in Figure 8.

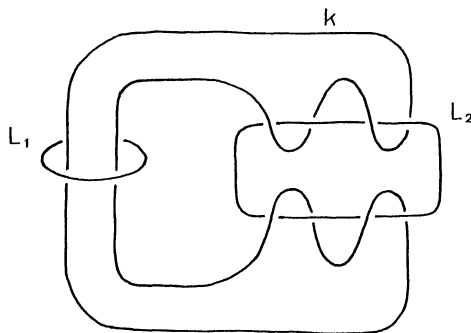


FIGURE 8

We denote the meridian-longitude pair of L_i by (m_i, l_i) ($i = 1, 2$). Let t be a knot ambient isotopic to $f(C)$, where C is a core of V , and (m, l) a meridian-longitude pair of t . To obtain the required pattern, remove a tubular neighborhood $N(L_i)$ and glue the knot exterior $E(t) = S^3 - \text{int } N(t)$ so that $m_i = l$ and $l_i = m$. Then, for $i = 1, 2$, the result $(S^3 - \text{int } N(L_i)) \cup_{\substack{m_i=l \\ l_i=m}} (S^3 - \text{int } N(t))$ is again S^3 , and we have new knots K_{3-i} and \tilde{L}_{3-i} as the images of k and L_{3-i} respectively. It is easy to see that both K_{3-i} and \tilde{L}_{3-i} are unknotted in S^3 . Thus the exterior V of \tilde{L}_{3-i} containing K_{3-i} forms a pattern (V, K_{3-i}) . In this way we get two patterns (V, K_1) and (V, K_2) . By the construction, for the faithful

embedding $f : V \hookrightarrow S^3$, $f(K_1) \cong f(K_2)$ does hold in S^3 . In fact, $f(K_1) \cong f(K_2)$ can be described as the knot obtained from k in Figure 8 by simultaneously replacing a neighborhood of a meridian disk of each of L_1 and L_2 by a tube knotted according to the given knot t .

From now on we prove $(V, K_1) \not\cong (V, K_2)$ by showing $\text{wrap}_V(K_1) \neq \text{wrap}_V(K_2)$. Clearly $\text{wrap}_V(K_1) \leq 2$ and $\text{wrap}_V(K_2) \leq 4$. Since $\text{wind}_V(K_2) = 0$, $\text{wrap}_V(K_2)$ must be even. Now we assume $\text{wrap}_V(K_2) = 2$. Then there exists a disk D_2 in

$$V = (S^3 - \text{int}N(L_1)) \cup_{\substack{m_1=l \\ l_1=m}} (S^3 - \text{int}N(t)) - \text{int}N(L_2)$$

such that $D_2 \cap K_2 = D_2 \cap k$ consists of two points and $\partial D_2 = l_2$. Extending D_2 , we may assume $\partial D_2 = L_2$. Let D_k be the disk depicted in Figure 9 (1), such that $\partial D_k = k$. We remark that $D_k \cap L_2$ consists of four points p_1, p_2, q_1, q_2 (see Figure 9 (1)).

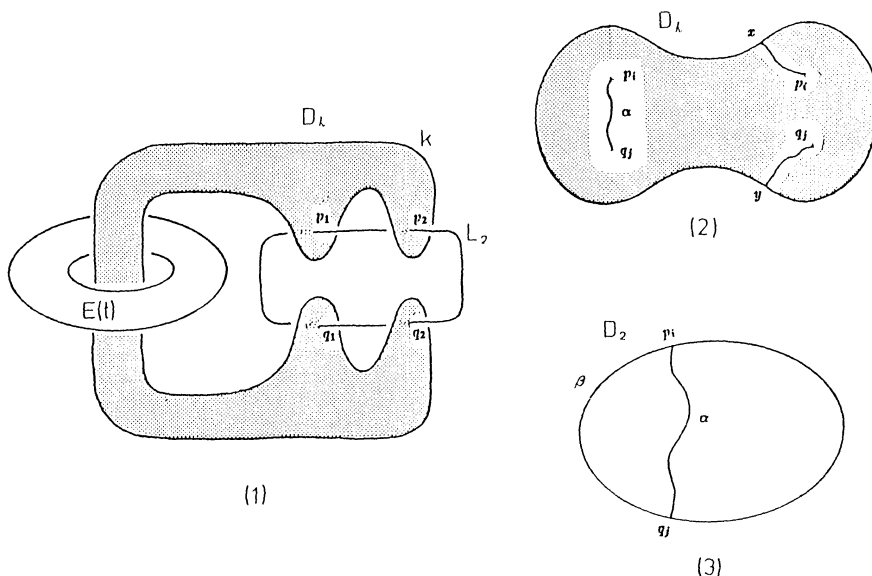


FIGURE 9

From the assumption we see that the boundary of arc components of $D_2 \cap D_k$ in D_k consists of six points p_1, p_2, q_1, q_2, x, y (see Figure 9 (2)). Considering the orientations, there exists an arc component α of $D_2 \cap D_k$ joining p_i and q_j for some i, j (see Figure 9 (2)(3)). Let β be an arc of L_2 connecting p_i and q_j , and D a disk in D_2 bounded by $\alpha \cup \beta$. Then $\alpha \cup \beta$ clearly has winding number one in the solid torus $S^3 - \text{int}N(L_1)$, which is knotted as $N(t)$ in $S^3 \supset V$.

This contradicts, via Lemma 2.1, that $\alpha \cup \beta = \partial D$. Hence we can conclude $\text{wrap}_V(K_2) \neq 2$, and applying the same argument we get also $\text{wrap}_V(K_2) \neq 0$. It follows that $\text{wrap}_V(K_2) = 4$. We see $\text{wrap}_V(K_1) = 2$ easily as follows. If $\text{wrap}_V(K_1) \neq 2$, then $\text{wrap}_V(K_1) = 0$. However this means $\text{wrap}_V(K_2) = 0$, thus $\text{wrap}_V(K_1) = 2$.

In this way we get the required patterns. \square

This result can be generalized to

COROLLARY 3.4. *For any knot K in S^3 and any faithful embedding f from V into S^3 , there exist patterns (V, K_1) and (V, K_2) such that $K_i \cong K$ in S^3 ($i = 1, 2$), which satisfy the following properties:*

- (1) $(V, K_1) \not\sim (V, K_2)$.
- (2) $f(K_1) \cong f(K_2)$ in S^3 for the embedding f from V into S^3 .

Proof. Let (V, k_1) and (V, k_2) be the patterns constructed in Theorem 3.3 depending upon the embedding f . Since k_i ($i = 1, 2$) is trivial in S^3 , we can locally replace an unknotted arc of k_i by a knotted arc (with a suitable direction) so that the resulting knot K_i represents K in S^3 . Then it follows from the choice of (V, k_1) and (V, k_2) that (V, K_1) and (V, K_2) are the required patterns. \square

Acknowledgments. I express my gratitude to Professor Tetsuo Shibuya for helpful communications and for giving an example in Remark 1.2 (1). The construction of Theorem 3.3 is due to Professor Makoto Sakuma, I want also to thank him. Finally I wish to thank the referee for useful comments.

REFERENCES

- [1] G. Burde and H. Zieschang, *Knots*, de Gruyter Studies in Math., vol. 5, Walter de Gruyter, 1985.
- [2] J. Hempel, *3-manifolds*, Ann. of Math. Stud., vol. 86, Princeton Univ. Press, Princeton, NJ, 1976.
- [3] W. Jaco, *Lectures on the three manifold topology*, CBMS Regional Conf. Ser. in Math., No. 43, Amer. Math. Soc., Providence, RI, 1980.
- [4] W. Jaco and P. Shalen, *Seifert fibered spaces in 3-manifolds*, Mem. Amer. Math. Soc., 220 (1979).
- [5] K. Johannson, *Homotopy equivalences of 3-manifolds with boundaries*, Lecture Notes in Math., vol. 761, Springer-Verlag, Berlin and New York, 1979.
- [6] J. Morgan and H. Bass, *The Smith Conjecture*, Pure Appl. Math., Academic Press, San Diego, CA, 1984.
- [7] D. Rolfsen, *Knots and links*, Mathematics Lecture Series, No. 7, Publish or Perish, Berkeley, CA, 1976.

- [8] H. Schubert, *Knoten und Vollringe*, Acta Math., **90** (1953), 131–286.
- [9] H. Seifert, *On the homology invariants of knots*, Quart. J. Math. Oxford Ser. (2), **1** (1950), 23–32.
- [10] T. Soma, *The Gromov invariant of links*, Invent. Math., **64** (1981), 445–454.

Received July 24, 1991 and in revised form September 7, 1992. This research was supported in part by Grant-in-Aid for Encouragement of Young Scientists 03740047, The Ministry of Education, Science and Culture.

DEPARTMENT OF MATHEMATICS
COLLEGE OF HUMANITIES & SCIENCES
NIHON UNIVERSITY
SAKURAJOSUI 3-25-40, SETAGAYA-KU
TOKYO 156, JAPAN

PACIFIC JOURNAL OF MATHEMATICS

Founded by

E. F. BECKENBACH (1906–1982) F. WOLF (1904–1989)

EDITORS

SUN-YUNG A. CHANG
(Managing Editor)
University of California
Los Angeles, CA 90024-1555
chang@math.ucla.edu

F. MICHAEL CHRIST
University of California
Los Angeles, CA 90024-1555
christ@math.ucla.edu

HERBERT CLEMENS
University of Utah
Salt Lake City, UT 84112
clemens@math.utah.edu

THOMAS ENRIGHT
University of California, San Diego
La Jolla, CA 92093
tenright@ucsd.edu

NICHOLAS ERCOLANI
University of Arizona
Tucson, AZ 85721
ercolani@math.arizona.edu

R. FINN
Stanford University
Stanford, CA 94305
finn@gauss.stanford.edu

VAUGHAN F. R. JONES
University of California
Berkeley, CA 94720
vfr@math.berkeley.edu

STEVEN KERCKHOFF
Stanford University
Stanford, CA 94305
spk@gauss.stanford.edu

MARTIN SCHARLEMANN
University of California
Santa Barbara, CA 93106
mgscharl@henri.ucsb.edu

HAROLD STARK
University of California, San Diego
La Jolla, CA 92093

V. S. VARADARAJAN
University of California
Los Angeles, CA 90024-1555
vsv@math.ucla.edu

SUPPORTING INSTITUTIONS

UNIVERSITY OF ARIZONA
UNIVERSITY OF BRITISH COLUMBIA
CALIFORNIA INSTITUTE OF TECHNOLOGY
UNIVERSITY OF CALIFORNIA
UNIVERSITY OF MONTANA
UNIVERSITY OF NEVADA, RENO
NEW MEXICO STATE UNIVERSITY
OREGON STATE UNIVERSITY

UNIVERSITY OF OREGON
UNIVERSITY OF SOUTHERN CALIFORNIA
STANFORD UNIVERSITY
UNIVERSITY OF HAWAII
UNIVERSITY OF UTAH
WASHINGTON STATE UNIVERSITY
UNIVERSITY OF WASHINGTON

The Supporting Institutions listed above contribute to the cost of publication of this Journal, but they are not owners or publishers and have no responsibility for its content or policies.

Mathematical papers intended for publication in the *Pacific Journal of Mathematics* should be in typed form or offset-reproduced (not dittoed), double spaced with large margins. Please do not use built up fractions in the text of the manuscript. However, you may use them in the displayed equations. Underline Greek letters in red, German in green, and script in blue. The first paragraph must be capable of being used separately as a synopsis of the entire paper. In particular it should contain no bibliographic references. Please propose a heading for the odd numbered pages of less than 35 characters. Manuscripts, in triplicate, may be sent to any one of the editors. Please classify according to the 1991 *Mathematics Subject Classification* scheme which can be found in the December index volumes of *Mathematical Reviews*. Supply name and address of author to whom proofs should be sent. All other communications should be addressed to the managing editor, or Julie Honig, University of California, Los Angeles, California 90024-1555.

There are page-charges associated with articles appearing in the Pacific Journal of Mathematics. These charges are expected to be paid by the author's University, Government Agency or Company. If the author or authors do not have access to such Institutional support these charges are waived. Single authors will receive 75 free reprints; joint authors will receive a total of 100 free reprints. Additional copies may be obtained at cost in multiples of 50.

The *Pacific Journal of Mathematics* (ISSN 0030-8730) is published monthly except for July and August. Regular subscription rate: \$200.00 a year (10 issues). Special rate: \$100.00 a year to individual members of supporting institutions.

Subscriptions, orders for numbers issued in the last three calendar years, and changes of address should be sent to Pacific Journal of Mathematics, P.O. Box 969, Carmel Valley, CA 93924, U.S.A. Old back numbers obtainable from Kraus Periodicals Co., Route 100, Millwood, NY 10546.

The Pacific Journal of Mathematics at P.O. Box 969, Carmel Valley, CA 93924 (ISSN 0030-8730) is published monthly except for July and August. Second-class postage paid at Carmel Valley, California 93924, and additional mailing offices. Postmaster: send address changes to Pacific Journal of Mathematics, P.O. Box 969, Carmel Valley, CA 93924.

PUBLISHED BY PACIFIC JOURNAL OF MATHEMATICS, A NON-PROFIT CORPORATION

This publication was typeset using $\mathcal{A}\mathcal{M}\mathcal{S}\text{-}\mathcal{T}\mathcal{E}\mathcal{X}$,
the American Mathematical Society's $\mathcal{T}\mathcal{E}\mathcal{X}$ macro system.

Copyright © 1993 by Pacific Journal of Mathematics

PACIFIC JOURNAL OF MATHEMATICS

Volume 161 No. 2 December 1993

On the method of constructing irreducible finite index subfactors of Popa	201
FLORIN PETRE BOCA	
Brownian motion and the heat semigroup on the path space of a compact Lie group	233
JAY BARRY EPPERSON and TERRY M. LOHRENZ	
Horizontal path spaces and Carnot-Carathéodory metrics	255
ZHONG GE	
Biholomorphic convex mappings of ball in \mathbb{C}^n	287
SHENG GONG, SHI KUN WANG and QI HUANG YU	
The Temperley-Lieb algebra at roots of unity	307
FREDERICK MICHAEL GOODMAN and HANS WENZL	
Jordan analogs of the Burnside and Jacobson density theorems	335
LUZIUS GRÜNENFELDER, M. OLMLADIČ and HEYDAR RADJAVI	
Elliptic representations for $\mathrm{Sp}(2n)$ and $\mathrm{SO}(n)$	347
REBECCA A. HERB	
Reflexivity of subnormal operators	359
JOHN MCCARTHY	
Knotting trivial knots and resulting knot types	371
KIMIHICO MOTEGI	
Commutativity of selfadjoint operators	385
MITSURU UCHIYAMA	
Correction to: "One-dimensional Nash groups"	393
JAMES JOSEPH MADDEN	



0030-8730(1993)161:2;1-L