

*Pacific
Journal of
Mathematics*

**A CLASS OF INCOMPLETE NON-POSITIVELY CURVED
MANIFOLDS**

BRIAN BOWDITCH

Volume 172 No. 1

January 1996

A CLASS OF INCOMPLETE NON-POSITIVELY CURVED MANIFOLDS

B.H. BOWDITCH

In this paper, we describe a class of simply connected non-positively curved riemannian manifolds which satisfy some curvature constraints. Such manifolds have many of the properties of (complete) Hadamard manifolds, such as geodesic convexity and the existence of an ideal boundary.

1. Introduction.

The geometry of Hadamard (complete, simply-connected, non-positively curved riemannian) manifolds has been intensively studied for some time. A general account of the basic theory can be found in [BaGS]. However, there are interesting examples of non-positively curved manifolds which fail to be complete, while retaining many of the geometric properties of Hadamard manifolds. The best known is the Weil-Peterssen metric on Teichmüller space. This is negatively curved [Ah, Tro] and incomplete [W1], yet it admits an exhaustion by compact convex sets, and is thus geodesically convex [W2]. We describe some further examples in Chapter 2. Also, incomplete non-positively curved metrics have been used to construct interesting examples of complete non-positively curved manifolds by modifying the metric in a neighbourhood of the ends (see for example [Abs]).

These examples suggest that certain incomplete metrics may be of some interest in their own right. In this paper we restrict attention to metrics satisfying certain curvature constraints, and show that they behave, in many respects, like complete manifolds. We shall assume in particular that the curvature “blows up” along any path of finite length that leaves every compact set.

Let us first summarise a few properties of (complete) Hadamard manifolds. Firstly, the exponential map based at any point gives a diffeomorphism of \mathbb{R}^n onto X . Moreover, there is a natural compactification, X_C , of X into a topological ball, formed by adjoining the *ideal sphere*, $X_I = X_C \setminus X$. A point of X_I may be thought of as an equivalence class of geodesic rays, where two rays are equivalent if they remain a bounded distance apart.

If, in addition, we assume that X has strictly negative curvature bounded away from 0, then it follows that X is a “visibility manifold”, i.e. any two points of X_I may be joined by a bi-infinite geodesic [EO].

If we go further, and impose another curvature bound away from $-\infty$ (so that X has “pinched curvature”), then much more can be said about the geometry of X . For example, we have Anderson’s result [An] that if $Q \subseteq X_C$ is any closed subset, and $\text{hull}(Q) \subseteq X_C$ is the closed convex hull of Q , then $X_I \cap \text{hull}(Q) = X_I \cap Q$. For further results about convex sets, see [Bo].

To generalise to incomplete (i.e. not necessarily complete) manifolds, let us assume that:

- (A) X is a Riemannian manifold such that
- (A1) X has non-positive curvature, and
- (A2) X is simply connected.

We write d for the path-metric on X , and write (\bar{X}, d) for the metric completion of (X, d) . Given $x \in X$, write $\kappa(x)$ for the maximal sectional curvature of any tangent 2-plane at X .

Suppose we assume, in addition to (A), that:

- (B) For all $a \in \bar{X} \setminus X$, there is some $K > 0$ and a neighbourhood U of a in \bar{X} such that for all $x \in X \cap U$, we have $\kappa(x) \leq -1/K^2 d(x, a)^2$;

then, we claim that:

- (1) X is geodesically convex. In fact, any two points $x, y \in \bar{X}$ may be joined by a geodesic segment $[x, y] \subseteq X \cup \{x, y\}$. Moreover, $[x, y]$ is, up to reparameterisation, uniquely length-minimising among all rectifiable paths in \bar{X} .
- (2) The completion \bar{X} is a CAT(0) space (as explained in Section 3.5).
- (3) There is a natural compactification X_C of X so that X_C is homeomorphic to a closed ball, with X as its interior.
- (4) There is a natural continuous injection $\iota : \bar{X} \rightarrow X_C$ from \bar{X} in the metric topology to X_C in its topology as a ball.
- (5) Suppose $(x, y) \in (X_C \times X_C) \setminus (X_I^\infty \times X_I^\infty)$ where $X_I^\infty = X_C \setminus \iota(\bar{X})$. Then, x and y may be joined by a unique geodesic $[x, y] \subseteq X \cup \{x, y\}$, (where $[x, x] = \{x\}$). Moreover, $[x, y]$ is closed in X_C .
- (6) The map $[(x, y) \mapsto [x, y]] : (X_C \times X_C) \setminus (X_I^\infty \times X_I^\infty) \rightarrow \mathcal{C}(X_C)$ is continuous, where $\mathcal{C}(X_C)$ is the set of all closed subsets of X_C in the Hausdorff topology (Section 5.2).

Suppose, in addition to (A) and (B), that X satisfies:

- (C) There exist $p_0 \in X$ and $L_0, R_0 > 0$, such that if $x \in X$ with $d(x, p_0) \geq R_0$, then $\kappa(x) \leq -1/L_0^2 d(x, p_0)^2$; then it follows also that:
 - (5') If $(x, y) \in X_C \times X_C$, then x and y may be joined by a unique geodesic $[x, y] \subseteq X \cup \{x, y\}$.
 - (6') The map $[(x, y) \mapsto [x, y]] : X_C \times X_C \rightarrow \mathcal{C}(X_C)$ is continuous.

More precise statements of these results will be given later. They will all be proven in this paper: (1) Proposition 3.5.3. (2) Proposition 3.5.1, (3) Proposition 4.5.2, (4) Proposition 4.3.4, (5) Lemma 4.1.4, Lemma 5.3.1, (6) Proposition 5.3.4, (5') Lemma 6.2.1, Proposition 6.2.3, (6') Proposition 6.3.2.

If one adds additional hypotheses, such as pointwise pinching of curvature, then we have variations of Anderson's construction which enable us to construct convex sets in X . Thus, for example, with appropriate hypotheses, we can deduce that X has an exhaustion by compact convex sets. There is also the possibility of generalising some of the results of [Bo] to such spaces, though we shall not get involved with that here. Indeed we suspect that this programme could be carried further, and that, for example, many analytic results could be carried over to such spaces.

Note that in the complete case, pinched negative curvature is the same as pointwise negative curvature together with bounded geometry. "Bounded geometry" means that, for any fixed $r > 0$, the set of metric balls $\{N(x, r) \mid x \in X\}$ (defined up to isometry) all lie in a compact set in the C^2 -topology. There is an analogous statement in the incomplete case. In this case, if X is negatively curved, properties (B) and (C) and pointwise pinching of curvature are all implied by a single hypothesis of "bounded geometry up to scale". To explain what we mean, let B be the closed unit ball in \mathbb{R}^n , with a standard orthonormal frame, F_0 , at the origin, o . Let \mathcal{S} be the space of smooth Riemannian metrics on B , with strictly negative curvature and with smooth boundary, ∂B , such that the frame F_0 is orthonormal in each metric, and such that ∂B is always the unit sphere about o . We give the space \mathcal{S} the C^2 topology. Suppose that X satisfies (A). Suppose that $x \in X$, and $\lambda > 0$ is such that the ball $N(x, \lambda)$ is compact. Given any orthonormal frame, F , at x , let $e : B \rightarrow N(x, \lambda)$ be the composition of a dilation by a factor of λ on \mathbb{R}^n with the exponential map sending F_0 to F . Thus, e is a diffeomorphism, so we can pull back the metric on X to get a metric on B . This gives us a point of \mathcal{S} . We shall say that X has *bounded geometry up to scale* if there is a compact subset, $S \subseteq \mathcal{S}$, such that for all $x \in X$, we can choose $\lambda(x) > 0$ such that $N(x, \lambda(x))$ is compact, and such that for some frame at x , the the point of \mathcal{S} constructed as above always lies in S . (Note that we are free to choose $\lambda(x)$ as small as we like. However, the sectional curvatures at the origin of metrics in S are all bounded away from 0. Thus, if $\lambda(x)$ is small, the scaling factor forces the curvature at x to be large. Similarly, if the curvature at x is small, then there must be a large compact metric ball centred on x .) We leave as an exercise the fact that this property implies properties (B) and (C).

As remarked earlier, one motive for studying incomplete manifold might

be to gain some further insight into the geometry of the Weil-Peterssen metric on the Teichmüller spaces. Wolpert [W2] shows that this is geodesically convex. As an example, he considers the case of once-punctured tori. In this case, the moduli space is a 2-dimensional Riemannian orbifold with two cone singularities (orbifold points), and a cusp singularity (with the cusp point removed), of the type obtained by spinning the graph of $f(x) = x^3, x > 0$ about the x -axis. It follows that the universal cover (i.e. Teichmüller space) in this case satisfies axioms (A) and (B) (see Chapter 2). For higher-dimensional spaces, the situation becomes more complicated. The asymptotics of the curvature tensor have been studied by Trapani [Tra]. It appears that in general property (B) fails. However, one might still hope for some modification of the hypothesis (B), for example, to take account to the directions of the tangent 2-planes along which the curvature blows up, sufficient to recover an ideal sphere analogous to Thurston's compactification.

In general, incomplete simply connected manifolds of negative curvature seem to have received little attention. Without some strong constraints on the curvature, they can behave in ways quite unlike Hadamard manifolds. For example, Hass [Ha] gives an example of a negatively curved metric on a 3-ball which contains a closed geodesic in its interior. This phenomenon is not possible in dimension 2, nor with constant curvature in any dimension. It might be interesting to explore further conditions under which this sort of behaviour would be prohibited.

2. Examples.

In this chapter we give some examples of the kind of incomplete manifolds we are considering. These particular examples have been chosen principally to illustrate the assertions made in the introduction. We begin with some manifolds satisfying properties (A) and (B).

Suppose $-\infty < a < b < \infty$, and that $f : (a, b) \rightarrow (0, \infty)$ is a smooth function. Let t be an arc-length parameter along the graph of f , $\text{graph}(f) \subseteq (a, b) \times (0, \infty)$. Given $t \in \text{graph}(f)$ write $\rho(t) \in \mathbb{R} \cup \{\infty\}$ for the length of the tangent at this point to the intercept with the x -axis. (Figure 2.) We take the sign of $\rho(t)$ to be the same as that of df/dt . We may form a surface of revolution, S , by spinning $\text{graph}(f)$ about the x -axis. Now, S has two orthogonal foliations: one by generators of S which are intrinsically geodesic, and the other by circles of curvature $c(t) = 1/\rho(t)$. We see that S has Gaussian curvature equal to

$$k(t) = -\frac{dc}{dt} - c^2 = \frac{1}{\rho^2} \left(\frac{d\rho}{dt} - 1 \right) = -\frac{1}{f} \frac{d^2 f}{dt^2}.$$

Thus, for S to non-positively curved, we need that f be convex. Such a surface, S , has two topological ends corresponding to the ends of the interval

(a, b) . We see that the end corresponding to a will be complete if and only if $a = -\infty$, or else $a > -\infty$ and $f(x) \rightarrow \infty$ as $x \rightarrow a$. We call such an end a *tube*. If we have $a > -\infty$ and $f(x) \rightarrow 0$ and $\frac{df}{dx}(x) \rightarrow 0$ as $x \rightarrow a$, then we call the end a *cuspl*. If S satisfies property (B), we see that it is necessary (but not sufficient) that either both the ends of S be tubes, or that one end be a tube, and the other be a cusp.

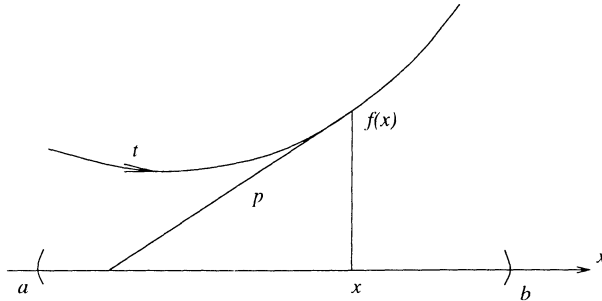


Figure 2.

As an explicit example, consider the graph of $f(x) = x^\beta$ for some $\beta > 1$, defined on the interval $(0, \infty)$. We have $-\frac{1}{f(x)} \frac{d^2 f}{dx^2}(x) = -\beta(\beta - 1)x^{-2}$. Now $x/t \rightarrow 1$ as $t \rightarrow 0$, and so the curvature of S blows up like $-1/t^2$ as we approach the cusp point at 0. We see that S satisfies (A1) and (B), and so its universal cover, $X = \tilde{S}$ satisfies (A) and (B). The metric completion \bar{X} of X is obtained by adding a single point, p , at the origin 0. Thus, under the natural inclusion $\iota : \bar{X} \rightarrow X_C$, the point p maps to an ideal point $\iota(p) \in X_I$. The remaining ideal points can be thought of as the endpoints of the geodesic generators of X , as $t \rightarrow \infty$. Thus, the set X_I^∞ of these remaining ideal points has naturally the topology of an open interval. This is compactified into the circle, X_I , by adding the point $\iota(p)$.

Suppose, more generally, that $f : (0, b) \rightarrow (0, \infty)$ is convex, and that $f(x) \rightarrow 0$ and $\frac{df}{dx}(x) \rightarrow 0$ as $x \rightarrow 0$. Then $\mu = \lim_{t \rightarrow \infty} \frac{df}{dt}(t) \in (0, 1]$ is well defined. (Thus $\mu = 1$ if $b \leq \infty$.) Let S be the surface of revolution, and $X = \tilde{S}$ the universal cover. We may coordinatise X using a radial coordinate $\theta \in \mathbb{R}$ and an arc length coordinate $t \in (0, \infty)$. In this way, S is the quotient of X by the map $[(t, \theta) \mapsto (t, \theta + 2\pi)]$. As before, X_C is formed by adjoining the arc $\{(\infty, \theta) \mid \theta \in \mathbb{R}\}$, and then taking the one-point compactification with the point 0 at the origin. Let l_θ be the geodesic generator $\{(t, \theta) \mid t \in (0, \infty)\}$ of X . The total Gauss curvature of the sector of X lying between l_{θ_1} and l_{θ_2} may be calculated as $C(\theta_0) = -\int_0^\infty (\theta_0 f) \left(\frac{1}{f} \frac{d^2 f}{dt^2} \right) dt = -\mu \theta_0$ where $\theta_0 = \theta_2 - \theta_1$. Applying Gauss-Bonnet, we find that the ideal points (∞, θ_1) and (∞, θ_2) can be joined by a bi-infinite geodesic in X if and only if $C(\theta_0) < -\pi$

i.e. if and only if $\theta_0 > \pi/\mu$. Now, $\mu \leq 1$, and so X cannot have the visibility property. Note that $\frac{d\rho}{dt} \rightarrow 1$ as $t \rightarrow \infty$, and so $k(t) = \frac{1}{\rho^2} \left(\frac{d\rho}{dt} - 1 \right) = o(1/t^2)$. Thus Property (C) fails in this case.

By giving similar consideration to the case where both ends of S are tubes, we see that no surface constructed in this way can satisfy all of properties (A), (B) and (C).

The surfaces of revolution just described are a special case of the following more general construction.

Suppose M is a Riemannian manifold, and that $I \subseteq \mathbb{R}$ is an open interval. Let $f : I \rightarrow (0, \infty)$ be a smooth function. We define a Riemannian metric on $X = M \times I$ by setting

$$ds^2 = dt^2 + f(t)^2 \sum_{i,j} g_{ij} dx^i dx^j,$$

where t is arc length in I , g_{ij} is the Riemannian metric on M with respect to the local coordinate system $(x^i)_i$, and ds is infinitesimal distance in X .

We remark that this is an example of a still more general construction of “warped products” described in the paper of Bishop and O’Neill [BiO]. In a warped product, the interval I may be replaced by any non-positively curved manifold. In the paper cited, there is a complete characterisation of when a warped product is non-positively curved.

In our special case, we can derive the relevant inequalities fairly simply as follows. Note that X has two orthogonal foliations, one by geodesics of the form $\{x\} \times I$ for $x \in M$, and the other by codimension-1 submanifolds of the form $M_t = M \times \{t\}$ for $t \in I$. Each M_t is totally umbilic, with principal curvatures equal to $c(t) = \frac{1}{f(t)} \frac{df}{dt}(t)$. In the intrinsic metric, M_t is isometric to M with the metric scaled by a factor of $f(t)$.

Write $A = \partial/\partial t$ for the vector field on X orthogonal to the M_t . Now suppose that Π is a tangent 2-plane at $(x, t) \in M \times I = X$. If Π is orthogonal to $A(x, t)$, then Π corresponds to a tangent 2-plane, Π_M at x in M . Write $S_M(\Pi_M)$ for the sectional curvature of M in Π_M . Thus, the sectional curvature, in Π , of the intrinsic metric of M_t is $S_M(\Pi_M)/f(t)^2$. Applying Gauss’s Theorema Egregium [S], we see that the sectional curvature, $S(\Pi)$, of X in Π is given by

$$S(\Pi) = \frac{1}{f^2} S_M(\Pi_M) - c^2 = \frac{1}{f^2} \left(S_M(\Pi_M) - \left(\frac{df}{dt} \right)^2 \right).$$

On the other hand, suppose that Π is a tangent 2-plane at (x, t) containing the vector $A(x, t)$. In this case the sectional curvature, $S(\Pi)$, of X in Π is

$$S(\Pi) = -\frac{dc}{dt} - c^2 = -\frac{1}{f} \frac{d^2 f}{dt^2}.$$

Now, if Y and Z are, locally, any two vector fields everywhere orthogonal to A , then a simple calculation shows that $R(A, Y, Y, Z) = 0$, where R is the Riemann curvature tensor. This symmetry implies that each sectional curvature of X at (x, t) lies between $-\frac{1}{f} \frac{d^2 f}{dt^2}$ and $\frac{1}{f^2} S_M(\Pi_M) - c^2 = \frac{1}{f^2} \left(S_M(\Pi_M) - \left(\frac{df}{dt} \right)^2 \right)$ for some tangent 2-plane Π_M at x in M . In particular, for X to be non-positively curved, it is sufficient that M be non-positively curved, and that f be convex. (For more detailed computations of this nature, see [BiO].)

Examples of this construction are the surfaces of revolution described above. In this case, we have $M = \mathbb{R}$ and f is thought of as a function of arc-length, t , along $\text{graph}(f) \equiv I$. In such a case, we must always have $\frac{df}{dt} < 1$.

With this last constraint removed, we can construct examples satisfying (A), (B) and (C). For example, with $M = I = \mathbb{R}$, and $f(t) = e^t$, we obtain the hyperbolic plane foliated by horospheres.

For another example, set $M = \mathbb{R}$, $I = (0, \infty)$ and $f(t) = t^\beta$ with $\beta > 1$. Now, the curvature $k(t)$ equals $-\frac{1}{f} \frac{d^2 f}{dt^2} = -\beta(\beta - 1)/t^2$. This case is qualitatively similar to the surface of revolution of $[x \mapsto x^\beta]$ described above, except that now, X satisfies (C), and has the visibility property.

As a third example, set $M = \mathbb{R}$, $I = (0, 1)$ and $f(t) = t^2/(1 - t)^2$. We see that $k(t) = -\frac{1}{f} \frac{d^2 f}{dt^2} = -2(2t + 1)/t^2(1 - t)^2$. Thus $-k(t)$ grows like $1/t^2$ as $t \rightarrow 0$ and like $1/(1 - t)^2$ as $t \rightarrow 1$. It follows that X satisfies (A) and (B). Since it is bounded (has finite diameter), it trivially satisfies (C). Both the completion, \bar{X} , and the compactification, X_C , of X may be identified set-theoretically as $(\mathbb{R} \times [0, 1])/\sim$, where $(x, 0) \sim (y, 0)$ for all $x, y \in \mathbb{R}$. However, the topologies are different. Thus X_C may be thought of as the one point compactification of $X \times (0, 1]$ by adding the point $0 \equiv \{(x, 0)\}/\sim$, whereas \bar{X} is noncompact—a base of neighbourhoods of 0 being given by $\{(\mathbb{R} \times [0, \epsilon])/\sim \mid \epsilon > 0\}$. Note that the natural map $\bar{X} \rightarrow X_C$ is a continuous bijection.

One can construct higher dimensional examples, for example by taking M to be euclidean n -space \mathbb{E}^n , or hyperbolic n -space \mathbb{H}^n . Note that $M = \mathbb{E}^n$, $I = \mathbb{R}$ and $f(t) = e^t$ gives us \mathbb{H}^{n+1} . So does $M = \mathbb{H}^n$, $I = \mathbb{R}$ and $f(t) = \cosh t$.

There are many variations on this theme one can explore. One can also go on to construct further examples by gluing together examples of this type.

3. Geodesic convexity.

In this chapter, we aim at establishing properties (1) and (2) for manifolds satisfying (A) and (B). The following notation is used throughout.

Suppose X is a Riemannian manifold. We write $T_x X$ for the tangent space to X at x , and TX for the total space of the tangent bundle. Given $\xi, \zeta \in T_x X$, we write $\langle \xi, \zeta \rangle$ and $|\xi| = \sqrt{\langle \xi, \xi \rangle}$ respectively for the Riemannian inner product and norm on $T_x X$. If $\xi, \zeta \neq 0$, set $\angle(\xi, \zeta) = \cos^{-1}(\langle \xi, \zeta \rangle / |\xi||\zeta|) \in [0, \pi]$ for the angle between ξ and ζ . We write d for the induced path-metric on X .

We shall use the term “geodesic” in the Riemannian sense of a curve whose first derivative is parallel. Thus, in terms of the metric d , a geodesic can be characterised as a constant-speed path, for which all sufficiently small subpaths are length-minimising.

3.1. Ruled maps. In this section we take X to be a Riemannian manifold of non-positive curvature (A1). For $x \in X$, we write $\kappa(x) \in [-\infty, 0]$ to be the maximal sectional curvature at x .

Suppose that $I = [t_0, t_1] \subseteq \mathbb{R}$ is a closed interval and $J \subseteq \mathbb{R}$ is any interval. We write $\text{int } I$ and $\text{int } J$ respectively for the interiors of I and J . Given a smooth map $\beta : I \times J \rightarrow X$, we shall denote by β_u and β^t the maps

$$\beta_u = [t \mapsto \beta(t, u)] : I \rightarrow X$$

and

$$\beta^t = [u \mapsto \beta(t, u)] : J \rightarrow X$$

where $t \in I$ and $u \in J$. Thus $\beta_u(t) = \beta^t(u) = \beta(t, u)$. We refer to paths of the form β_u and β^t respectively as *longitudes* and *transversals*. We write $\partial\beta/\partial t$ and $\partial\beta/\partial u$ respectively for $\beta_*(\partial/\partial t)$ and $\beta_*(\partial/\partial u)$. We say that β is a *ruled map* if for all $u \in J$, β_u is a geodesic. Thus $\left| \frac{\partial\beta}{\partial t}(t, u) \right| = (\text{length } \beta_u) / |t_1 - t_0|$.

Suppose that for $u \in J$, the geodesic β_u is non-constant. We see that the map $[t \mapsto \frac{\partial\beta}{\partial u}(t, u)]$ is the first variation of a geodesic along β_u . Thus, the component of $\frac{\partial\beta}{\partial u}(t, u)$ parallel to $\frac{\partial\beta}{\partial t}(t, u)$ is linear in t . Moreover, since X is non-positively curved, the Riemannian norm of the component orthogonal to $\frac{\partial\beta}{\partial t}(t, u)$ is convex (see the discussion of normalised ruled maps below). It follows that the map $[t \mapsto \left| \frac{\partial\beta}{\partial u}(t, u) \right|]$ is convex. This is also readily verified in the case where β_u is constant. Integrating, we find that the map $[t \mapsto \text{length } \beta^t] : J \rightarrow [0, \infty)$ is convex. In particular:

Lemma 3.1.1. *For all $t \in [t_0, t_1]$, we have*

$$\text{length } \beta^t \leq \max(\text{length } \beta^{t_0}, \text{length } \beta^{t_1}).$$

We shall say that a ruled map $\beta : I \times J \rightarrow X$ is *non-degenerate* if β_u is non-constant for all $u \in J$. In such a case, we say that $(t, u) \in I \times J$ is a *singular point* if β fails to be an immersion at that point, i.e. if $\frac{\partial \beta}{\partial u}(t, u)$ is some multiple of $\frac{\partial \beta}{\partial t}(t, u)$. We say that β is *non-singular* if there are no singular points in $\text{int } I \times J$. In such a case, the pull back of the Riemannian metric to $\text{int } I \times \text{int } J$ is also a Riemannian metric of non-positive curvature. In fact, the curvature at (t, u) is at most $\kappa(\beta(t, u))$. This is Synge's Inequality (see [S]). In the particular context of ruled maps, it is discussed in a paper of Aleksandrov [Alek].

By a *ruled surface*, we shall mean the image, $P = \beta(I \times J) \subseteq X$, of a ruled map $\beta : I \times J \rightarrow X$, where J is compact, and such that β is non-singular and injective on $\text{int } I \times \text{int } J$. We shall refer to the sets $\beta(I \times \{u\})$ for $u \in J$ as *generating geodesics*. We write $\kappa_P(x)$ for the intrinsic curvature of P at x . Thus $\kappa_P(x) \leq \kappa(x) \leq 0$. Of particular interest is the case where the boundary, ∂P , of P is a piecewise geodesic path. This motivates the following definition.

Definition. By a (*non-positively curved*) *n-gon* we mean a surface P , which is topologically a closed disc with boundary ∂P , together with a set $V \subseteq \partial P$ of n points, and a metric, ρ on P such that ρ restricted to the interior $\text{int } P = P \setminus \partial P$ is a non-positively curved Riemannian metric, and such that each component of $\partial P \setminus V$ is geodesic.

We shall refer to the points of V as *vertices* and the components of $\partial P \setminus V$ as *edges*. At each vertex $v \in V$, the adjacent edges meet at some well-defined angle $\theta(v) \geq 0$. Since the metric is not assumed to be Riemannian at the point v itself, it may be possible to have $\theta(v) = 0$ (if the curvature grows sufficiently fast as we approach v). In such a case, we refer to v as a *cuspidal point*. In all cases we consider, P will be convex, i.e. $\theta \leq \pi$ for all $v \in V$. Now, the Gauss-Bonnet formula tells us that

$$\sum_{v \in V} \theta(v) = (n - 2)\pi + \int_P \kappa_P(x) d\omega(x),$$

where $\kappa_P(x)$ is the curvature at $x \in P$, and $d\omega$ is the area element. Note that we must always have $n \geq 3$.

By talking about ruled surfaces, we avoid having to worry about the technical complication of dealing with singular points; although intuitively we would expect such points to work in our favour since they concentrate negative curvature. The fact that singular points do not cause any real problems has been made precise by Aleksandrov [Alek].

Another another type of restriction we shall want to place on ruled maps is the following.

We say that a non-degenerate ruled map $\beta : I \times J \rightarrow X$ is *normalised* if:

- (R1) for all $u \in J$, the longitude $\beta_u = [t \mapsto \beta(t, u)]$ is a geodesic parameterised with respect to arc-length (i.e. $\left| \frac{\partial \beta}{\partial t}(t, u) \right| = 1$ for all (t, u)); and
- (R2) for all $(t, u) \in I \times J$, we have

$$\left\langle \frac{\partial \beta}{\partial t}(t, u), \frac{\partial \beta}{\partial u}(t, u) \right\rangle = 0.$$

Thus, for a fixed u , the map $[t \mapsto \frac{\partial \beta}{\partial u}(t, u)]$ is a Jacobi field along the longitude β_u . We write $J(t) = \left| \frac{\partial \beta}{\partial u}(t, u) \right|$. From the Jacobi field equation [S], we know that, except where it vanishes, $J(t)$ is smooth in t , and that

$$\frac{d^2 J}{dt^2}(t) \geq -\kappa(\beta(t, u))J(t).$$

Suppose that $\lambda : I \rightarrow [0, \infty)$ satisfies $\lambda(t) \leq -\kappa(\beta(t, u))$ for all $t \in I = [t_0, t_1]$. The following is a simple consequence of the above differential inequality.

Proposition 3.1.2. *Suppose $f : I \rightarrow [0, \infty)$ is smooth and satisfies $\frac{d^2 f}{dt^2}(t) = \lambda(t)f(t)$ for all $t \in I$. If $f(t_0) = J(t_0)$ and $\frac{df}{dt}(t_0) \leq \frac{dJ}{dt}(t_0)$ then $f(t) \leq J(t)$ for all $t \in I$.*

Corollary 3.1.3. *Suppose $f : I \rightarrow [0, \infty)$ is smooth and satisfies $\frac{d^2 f}{dt^2}(t) = \lambda(t)f(t)$ for all $t \in I$. If $f(t_0) = J(t_0)$ and $f(t_1) = J(t_1)$, then $f(t) \leq J(t)$ for all $t \in I$.*

Of particular interest will be the case where λ has the form

$$\lambda(t) = 1/K^2(t+h)^2$$

for $t \geq 0$, and $K, h > 0$ fixed. The solutions of $\frac{d^2 f}{dt^2}(t) = \lambda(t)f(t)$ have the form $(t+h)^{1+\mu}$ and $(t+h)^{-\mu}$ where $\mu = (\sqrt{1+4K^2}) - 1 > 0$. In particular, if $f(0) = 1$ and $\frac{df}{dt}(0) = 0$ we have the solution

$$f(t) = \frac{\mu}{2\mu+1} \left(\left(1 + \frac{t}{h}\right)^{1+\mu} + \left(1 + \frac{1}{\mu}\right) \left(1 + \frac{t}{h}\right)^{-\mu} \right).$$

We shall refer to this later (Lemmas 3.4.1 and 6.1.1).

For the proof Lemma 3.4.1, we will need to describe a process of “normalising” ruled maps.

Suppose that $\alpha : I \times J \rightarrow X$ is a non-degenerate ruled map, where now $I = [v_0, v_1]$. We are looking for a subset $S \subseteq \mathbb{R} \times J$ and a map $\rho : I \times J \rightarrow S$ with the following properties:

- (N1) ρ is a smooth diffeomorphism of $I \times J$ onto S .

- (N2) For all $u \in J$, the set $S \cap (\mathbb{R} \times \{u\})$ is a closed interval of the form $[q_0(u), q_1(u)] \times \{u\}$.
- (N3) For all $u \in J$, the map $\rho|(I \times \{u\})$ sends $I \times \{u\}$ linearly onto $[q_0(u), q_1(u)] \times \{u\}$.
- (N4) The map $\beta = \alpha \circ \rho^{-1} : S \rightarrow X$ is a normalised ruled map (i.e. it satisfies properties (R1) and (R2) above.)

We see that S has the form $S = \{(t, u) \in \mathbb{R} \times J \mid q_0(u) \leq t \leq q_1(u)\}$, where $q_0, q_1 : J \rightarrow \mathbb{R}$ are smooth maps.

As before, we define longitudes, α_u, β_u , and transversals α^v, β^t , by $\alpha^v(u) = \alpha_u(v) = \alpha(v, u)$ and $\beta^t(u) = \beta_u(t) = \beta(t, u)$. For $i = 0, 1$, set $\gamma_i = \alpha^{v_i} : J \rightarrow X$, and $\sigma_i = [u \mapsto (q_i(u), u)] : J \rightarrow S$. Thus, $\gamma_i = \beta \circ \sigma_i$. We see that

$$\frac{d\gamma_i}{du}(u) = \frac{dq_i}{du}(u) \frac{\partial \beta}{\partial t}(\sigma_i(u)) + \frac{\partial \beta}{\partial u}(\sigma_i(u)),$$

and so

$$\frac{dq_i}{du}(u) = \left\langle \frac{d\gamma_i}{du}(u), \frac{\partial \beta}{\partial t}(\sigma_i(u)) \right\rangle.$$

Note that $\frac{\partial \beta}{\partial t}(\sigma_i(u))$ is the unit tangent vector $\xi_i(u) = \left(\frac{v_1 - v_0}{l(u)} \right) \frac{\partial \alpha}{\partial v}(v_i, u)$ to the geodesic α_u , where $l(u) = \text{length } \alpha_u = \text{length } \beta_u$.

Now, suppose that we are given α , and want to construct S and ρ , and hence β . We can obtain the functions q_i , up to an additive constant, by integrating the quantity $\left\langle \frac{d\gamma_i}{du}(u), \xi_i(u) \right\rangle$. Note that $\frac{d}{du}(q_1(u) - q_0(u)) = \frac{dl}{du}(u)$, and so we can arrange that $q_1(u) - q_0(u) = l(u)$ for all $u \in J$. This, then, defines the set $S \subseteq \mathbb{R} \times J$, and hence determines the map $\rho : I \times J \rightarrow S$. One verifies that the map $\beta = \alpha \circ \rho^{-1}$ satisfies properties (R1) and (R2) as required.

3.2. The space of geodesics. For the moment, we can take X to be any Riemannian manifold. Let (\bar{X}, d) be the metric completion of (X, d) . Since (X, d) is a path-metric space it follows that (\bar{X}, d) is a path-metric space. We claim that every point of $\bar{X} \setminus X$ is accessible by a smooth path of finite length:

Lemma 3.2.1. *Suppose $y \in \bar{X} \setminus X$; then there is a smooth path $\beta : [0, 1] \rightarrow \bar{X}$ so that $\beta(0) = y$, $\beta((0, 1]) \subseteq X$ and $\text{length } \beta < \infty$.*

Proof. Certainly, y is accessible by a rectifiable path of finite length in X , and we may use local convexity to approximate it by a smooth path. \square

Now, write $\text{path}(\bar{X})$ for the set of all paths from $[0, 1]$ to \bar{X} . Given $\alpha, \beta \in \text{path}(\bar{X})$, write

$$d_{sup}(\alpha, \beta) = \max\{d(\alpha(t), \beta(t)) \mid t \in [0, 1]\}.$$

Thus d_{sup} is a metric on $\text{path}(\bar{X})$. We see easily that:

Proposition 3.2.2. $(\text{path}(\bar{X}), d_{sup})$ is a complete metric space.

We write $\text{path}(X) \subseteq \text{path}(\bar{X})$ for the subspace of paths lying entirely in X .

We define the *endpoint map*

$$\pi : \text{path}(\bar{X}) \longrightarrow \bar{X} \times \bar{X}$$

by $\pi(\beta) = (\beta(0), \beta(1))$. Clearly π is continuous.

Let $\text{geod}(\bar{X}) \subseteq \text{path}(\bar{X})$ be the subspace of those $\beta \in \text{path}(\bar{X})$ such that either β is constant, or else $\beta((0, 1)) \subseteq X$ and $\beta|_{(0, 1)}$ is a constant-speed geodesic. Let

$$\text{geod}(X) = \text{geod}(\bar{X}) \cap \text{path}(X) = \text{geod}(\bar{X}) \cap \pi^{-1}(X \times X).$$

Now, let us suppose that X is non-positively curved (A1). In this case, the map $\pi : \text{geod}(X) \longrightarrow X \times X$ is a local homeomorphism:

Lemma 3.2.3. *Suppose $b \in \text{geod}(X)$. Let $\pi(b) = (x, y)$. Then, there are neighbourhoods U of x and V of y in X , and a neighbourhood W of b in $\text{geod}(X)$ such that $\pi|_W : W \longrightarrow U \times V$ is a homeomorphism.*

Proof. This follows, exactly as in the complete case, using the Jacobi field equation, and the implicit function theorem. \square

We see that, if X has dimension n , then $\text{geod}(X)$ is a $2n$ -dimensional manifold, and inherits a smooth structure from $X \times X$.

Suppose that $\gamma : J \longrightarrow \text{geod}(X)$ is a smooth path. By definition, the paths $\gamma_i = [u \mapsto \gamma(u)(i)] : J \longrightarrow X$ for $i = 0, 1$ are smooth. We write $\hat{\gamma} : [0, 1] \times J \longrightarrow X$ for the map given by $\hat{\gamma}(t, u) = \gamma(u)(t)$.

Lemma 3.2.4. *The map $\hat{\gamma}$ is smooth.*

Proof. From the implicit function theorem, exactly as in the complete case. \square

Thus, $\hat{\gamma}$ is a ruled map. Note that $\gamma_i = \hat{\gamma}^i$ according to our previous notation. Applying Lemma 3.1.1, we see that γ is a rectifiable path in $(\text{path}(\bar{X}), d_{sup})$. In fact, if $J' \subseteq J$ is any subinterval, then

$$\text{length}(\gamma|_{J'}) \leq \max(\text{length}(\gamma_0|_{J'}), \text{length}(\gamma_1|_{J'})).$$

Since $(\text{path}(\bar{X}), d_{sup})$ is complete, we have the following:

Lemma 3.2.5. *Suppose $\gamma : (0, 1] \rightarrow \text{geod}(X)$ is smooth, and $\text{length } \gamma_i < \infty$ for $i = 0, 1$. Then, γ extends (uniquely) to a map $\gamma : [0, 1] \rightarrow \text{path}(\bar{X})$.*

Suppose, in such a case, it happens that $\gamma(0)((0, 1)) \subseteq X$, so that $\gamma(0)|(0, 1)$ must be geodesic. Thus, by definition, $\gamma(0) \in \text{geod}(\bar{X})$. Our aim in the next section is to show that this is always the case if X satisfies axiom (B), and $\gamma(0)$ is non-constant.

3.3. The path-lifting property. Suppose that X is non-positively curved (A1) and satisfies:

(B) For all $a \in \bar{X} \setminus X$, there is some $K > 0$ and a neighbourhood U of a in \bar{X} such that for all $x \in X \cap U$ we have $\kappa(x) \leq -1/K^2 d(x, a)^2$.

We aim to show that $\pi : \text{geod}(X) \rightarrow X \times X$ is a covering map. A similar idea can be found in [AlexB]. This result will be based on the following path-lifting property.

Lemma 3.3.1. *Suppose $\gamma : [0, 1] \rightarrow \text{path}(\bar{X})$ with $\gamma((0, 1)) \subseteq \text{geod}(X)$, and $\gamma|(0, 1]$ smooth. For $i = 0, 1$, write γ_i for the path $[u \mapsto \gamma(u)(i)] : [0, 1] \rightarrow \bar{X}$. Suppose that for $i = 0, 1$, we have $\text{length } \gamma_i < \infty$. Then $\gamma(0) \in \text{geod}(\bar{X})$.*

Proof. By definition, any constant path lies in $\text{geod}(\bar{X})$, so we can suppose that $\gamma(0)$ is non-constant. As remarked at the end of the last section, it suffices to show that $\gamma(0)((0, 1)) \subseteq X$. Without loss of generality, we can suppose that $\gamma(u)$ is non-constant for all $u \in [0, 1]$. Define $\alpha : [0, 1]^2 \rightarrow \bar{X}$ by $\alpha(v, u) = \gamma(u)(v)$. Thus, $\alpha : [0, 1] \times (0, 1]$ is a non-degenerate ruled map. Now, the normalising procedure of Section 3.1 gives us a map $\rho : [0, 1] \times (0, 1] \rightarrow \mathbb{R} \times (0, 1]$ so that $\beta = \alpha \circ \rho^{-1} : S_0 \rightarrow X$ is a normalised ruled map, where $S_0 = \rho([0, 1] \times (0, 1]) = \{(t, u) \in \mathbb{R} \times (0, 1] \mid q_0(u) \leq t \leq q_1(u)\}$. We have $\gamma_i|(0, 1] = \beta \circ \sigma_i$ where $\sigma_i(u) = (q_i(u), u)$. Thus, for all $u \in (0, 1]$,

$$\frac{d\gamma_i}{du}(u) = \frac{dq_i}{dt}(u) \frac{\partial \beta}{\partial t}(\sigma_i(u)) + \frac{\partial \beta}{\partial u}(\sigma_i(u))$$

and so

$$\left| \frac{dq_i}{dt}(u) \right| \leq \left| \frac{d\gamma_i}{du}(u) \right|.$$

We see that $\int_0^1 \left| \frac{dq_i}{dt}(u) \right| du \leq \text{length } \gamma_i < \infty$, and so $q_i(u)$ tends to a limit, $q_i(0)$, as u tends to 0. Also, since $l(u) = \text{length } \alpha_u = q_1(u) - q_0(u)$ for all $u \in (0, 1]$, and since $\alpha_0 = \gamma(0)$ is non-constant, we see that $q_0(0) < q_1(0)$. Let $S = \{(t, u) \in \mathbb{R} \times [0, 1] \mid q_0(u) \leq t \leq q_1(u)\}$. We may extend ρ to a homeomorphism $\rho : [0, 1]^2 \rightarrow S$ mapping $[0, 1] \times \{0\}$ linearly to $[q_0(0), q_1(0)] \times \{0\}$. Thus, β extends to a map $\beta = \alpha \circ \rho^{-1} : S \rightarrow \bar{X}$. As

before, we define longitudes, β_u , and transversals, β^t , by $\beta_u(t) = \beta^t(u) = \beta(t, u)$. We want to show that $\beta_0((q_0, q_1)) = \gamma(0)((0, 1)) \subseteq X$.

Suppose, for contradiction, that there is some $t \in (q_0, q_1)$ with $\beta(t, 0) \in \bar{X} \setminus X$. For notational convenience, we shall assume that $t = 0$, i.e. that $\beta(0, 0) \in \bar{X} \setminus X$. Let $a = \beta(0, 0)$.

Let U be the neighbourhood of a in \bar{X} given by the hypothesis (B) above. We can find $t_0 > 0$ and $u_0 > 0$ such that $[-t_0, t_0] \times [0, u_0] \subseteq S$ and $\beta([-t_0, t_0] \times [0, u_0]) \subseteq U$.

Now, for all $(t, u) \in S$, we have that

$$\left| \frac{\partial \beta}{\partial u}(t, u) \right| \leq \max_{i=0,1} \left| \frac{\partial \beta}{\partial u}(\sigma_1(u)) \right| \leq \max_{i=0,1} \left| \frac{d\gamma_i}{du}(u) \right|.$$

The first inequality follows from Corollary 3.1.3 (with $\lambda \equiv 0$) and the second comes from the formula for $\frac{d\gamma_i}{du}(u)$ given above. In particular, we see that for all $t \in [-t_0, t_0]$,

$$\int_0^{u_0} \left| \frac{\partial \beta}{\partial u}(t, u) \right| du \leq \max_{i=0,1} \text{length}(\gamma_i|[0, u_0]) < \infty.$$

Given $u \in [0, u_0]$, set

$$h(u) = \int_0^u \left| \frac{\partial \beta}{\partial u}(0, w) \right| dw.$$

Thus, $h(u) = \text{length}(\beta^0|[0, u]) \geq d(a, \beta(0, u))$. Since the longitude β_u is a geodesic parameterised by arc-length, we have, for all $t \in [-t_0, t_0]$

$$d(\beta(0, u), \beta(t, u)) = |t|$$

and so

$$d(a, \beta(t, u)) \leq |t| + h(u).$$

Thus, by hypothesis (B), we have

$$\kappa(\beta(t, u)) \leq -1/K^2(|t| + h(u))^2.$$

Fix, for the moment, some $u \in (0, u_0]$. For $t \in [-t_0, t_1]$ set $J(t) = \left| \frac{\partial \beta}{\partial u}(t, u) \right|$. If $J(0) \neq 0$, then J is differentiable at 0. Suppose $\frac{dJ}{dt}(0) \geq 0$. Then, applying Proposition 3.1.2 on the interval $[0, t_0]$ and using the formula given after the Proposition, we find that

$$J(t_0) \geq \frac{\mu}{2\mu + 1} \left(1 + \frac{t_0}{h(u)} \right)^{1+\mu} J(0).$$

If, on the other hand, $\frac{dJ}{dt}(0) \leq 0$, then, by symmetry, we get the same lower bound for $J(-t_0)$. Thus, in all cases, we get that

$$J(-t_0) + J(t_0) \geq \frac{\mu}{2\mu + 1} \left(1 + \frac{t_0}{h(u)}\right)^{1+\mu} J(0).$$

Thus,

$$\begin{aligned} \infty &> \int_0^{u_0} \left| \frac{\partial \beta}{\partial u}(-t_0, u) \right| du + \int_0^{u_0} \left| \frac{\partial \beta}{\partial u}(t_0, u) \right| du \\ &\geq \frac{\mu}{2\mu + 1} \int_0^{u_0} \left(1 + \frac{t_0}{h(u)}\right)^{1+\mu} \left| \frac{\partial \beta}{\partial u}(0, u) \right| du \\ &= \frac{\mu}{2\mu + 1} \int_0^{u_0} \left(1 + \frac{t_0}{h(u)}\right)^{1+\mu} \frac{dh}{du}(u) du \\ &= \frac{\mu}{2\mu + 1} \int_0^{h(u_0)} \left(1 + \frac{t_0}{w}\right)^{1+\mu} dw \\ &= \infty. \end{aligned}$$

This contradicts the existence of $a \in \gamma(0)((0, 1)) \cap (\bar{X} \setminus X)$. Thus $\gamma(0)((0, 1)) \subseteq X$, and so $\gamma(0) \in \text{geod}(\bar{X})$ as required. \square

Corollary 3.3.2. *The map $\pi : \text{geod}(X) \rightarrow X \times X$ is a covering map.*

Proof. By Lemma 3.2.3, we know that π is a local homeomorphism. Lemmas 3.2.5 and 3.3.1 together tell us that π has the path-lifting property for smooth paths. The result follows by standard arguments. \square

3.4. Properties of geodesics. In this section we shall add the assumption (A2) that X is simply connected, i.e., altogether we are assuming that X satisfies hypotheses (A) and (B).

Now, $X \times X$ is simply connected, and so by Corollary 3.3.2, we see that each component of $\text{geod}(X)$ maps homeomorphically to $X \times X$ under π . Choose any point $x_0 \in X$, and let $\text{geod}_0(X)$ be the component of $\text{geod}(X)$ containing the constant path at x_0 . Let π_0 be the restriction of π to $\text{geod}_0(X)$ so that $\pi_0 : \text{geod}_0(X) \rightarrow X \times X$ is a homeomorphism. Given $x, y \in X$, write $[x \rightarrow y] = \pi_0^{-1}(x, y)$. We see easily that for all $x \in X$, $[x \rightarrow x]$ is the constant path at x .

Lemma 3.4.1. $\text{geod}(X) = \text{geod}_0(X)$.

Proof. Suppose, for contradiction, that $\text{geod}(X) \neq \text{geod}_0(X)$. Choose any $x \in X$. Since $\pi : \text{geod}(X) \rightarrow X \times X$ is a covering map, there is some

$\alpha \in \text{geod}(X) \setminus \text{geod}_0(X)$ with $\pi(\alpha) = (x, x)$. Thus $\alpha \neq [x \rightarrow x]$. Without loss of generality can suppose that $x \notin \alpha((0, 1))$. (Otherwise choose a smaller segment of α and reparameterise.) For each $t \in (0, 1)$, the path α meets the path $[x \rightarrow \alpha(t)]$ in $\alpha(t)$, at an angle different from 0 or π . Thus, as t ranges through $[0, 1]$, the geodesics $[x \rightarrow \alpha(t)]$ span a non-positively curved 1-gon, which is impossible by Gauss-Bonnet (Section 3.1). \square

In summary, we have shown:

Proposition 3.4.2. *Any two points of X are joined by a unique geodesic (defined on the domain $[0, 1]$). Moreover, this geodesic varies smoothly in its endpoints.*

Given $x, y \in X$, write $[x, y] \subseteq X$ for the image of $[x \rightarrow y]$. Thus $[x, x] = \{x\}$ and $[x, y] = [y, x]$.

For a fixed $x \in X$, the function ρ defined by $\rho(z) = \text{length}[x \rightarrow z]$ is smooth on $X \setminus \{x\}$. Moreover, any geodesic $[x \rightarrow y]$ is orthogonal to the level sets of ρ , and so a standard argument of Riemannian geometry shows that:

Proposition 3.4.3. *For all $x, y \in X$, the geodesic $[x \rightarrow y]$ is, up to reparameterisation, the unique length-minimising rectifiable path from x to y . (In particular, $d(x, y) = \text{length}[x \rightarrow y]$.)*

Now, given $x \in X$ and $y \in X \setminus \{x\}$, we write $\vec{x}\hat{y} = \frac{1}{d(x, y)} \frac{d\alpha}{dt}(0)$, where $\alpha = [x \rightarrow y]$. In other words, $\vec{x}\hat{y}$ is the unit tangent vector at x along $[x, y]$. If $z \in X \setminus \{x\}$, write $y\hat{x}z = \angle(\vec{x}\hat{y}, \vec{x}\hat{z})$ for the angle between $\vec{x}\hat{y}$ and $\vec{x}\hat{z}$.

Given the existence and uniqueness of geodesics, the following comparison theorems follow exactly as in the complete case. Let (\mathbb{E}^2, d') be the euclidean plane,

Proposition 3.4.4. (Angle Comparison Theorem of Aleksandrov). *Suppose $x, y, z \in X$ are distinct points. Choose $x', y', z' \in \mathbb{E}^2$, so that $d'(x', y') = d(x, y)$, $d'(y', z') = d(y, z)$ and $d'(z', x') = d(z, x)$. Then $x\hat{y}z \leq x'\hat{y}'z'$, $y\hat{z}x \leq y'\hat{z}'x'$ and $z\hat{x}y \leq z'\hat{x}'y'$.*

We refer to $x'y'z'$ as a *comparison triangle* for xyz .

Proposition 3.4.5. (CAT(0) inequality). *Suppose $x, y, z \in X$ are distinct points. Suppose $u \in [x, y]$ and $v \in [x, z]$. Choose a comparison triangle $x'y'z'$ in \mathbb{E}^2 for xyz . Let $u' \in [x', y']$ and $v' \in [x', z']$ be the points with $d'(x', u') = d(x, u)$ and $d'(x', v') = d(x, v)$. Then $d'(u', v') \leq d(u, v)$.*

We thus say that (X, d) is a ‘‘CAT(0)-space’’. More precisely, a CAT(0)-space is a path-metric space in which every pair of points may be joined

by a “geodesic”, in the sense of a length-minimising path, and where the conclusion of Proposition 3.4.5 is satisfied where $[x, y]$ may be interpreted as any choice of geodesic from x to y . In fact, it follows, in retrospect, that in a CAT(0)-space, there is a unique geodesic joining any pair of points, and so $[x, y]$ is uniquely defined. For further discussion of such spaces, see Ballmann’s article in Chapter 10 of [GH], or the book by Bridson and Haefliger [BrH].

As a corollary of Proposition 3.4.5, we have the convexity of the distance function:

Proposition 3.4.6. *Suppose $I, J \subseteq \mathbb{R}$ are intervals, and that $\alpha : I \rightarrow X$ and $\beta : J \rightarrow X$ are geodesics parameterised proportionately to arc-length. Then the function $[(t, u) \mapsto d(\alpha(t), \beta(u))]: I \times J \rightarrow [0, \infty)$ is convex.*

3.5. The completion. Finally in this chapter, we describe the geometry of the completion (\bar{X}, d) of (X, d) . We are again assuming that X satisfies hypotheses (A) and (B).

Now, the metric completion of any CAT(0)-space is a CAT(0)-space, so we see immediately that:

Proposition 3.5.1. *(\bar{X}, d) is a CAT(0)-space.*

In particular, every pair of points are joined by a unique geodesic. Recall, however, that the term “geodesic” is here being used in the metric space sense of a constant-speed globally length-minimising path. We should therefore check that this agrees with the notion of “geodesic” already defined in Section 3.2. As before, we write $\text{geod}(\bar{X})$ for the space of such geodesics.

Note that it’s easy to see that a path $\alpha \in \text{geod}(\bar{X})$ is globally length-minimising, in other words, that $\text{length } \alpha = d(x, y)$ where $(x, y) = \pi(\alpha)$. To do this, choose $t \in (0, \frac{1}{2}]$. Since geodesics in X are globally length-minimising (Proposition 3.4.3), we have that $\text{length}(\alpha|_{(t, 1-t)}) = d(\alpha(t), \alpha(1-t))$. The observation follows by letting $t \rightarrow 0$. Now, since (\bar{X}, d) is CAT(0), it now follows that if $\alpha, \beta \in \text{geod}(\bar{X})$ with $\pi(\alpha) = \pi(\beta)$, then $\alpha = \beta$. (This can also be verified directly, by a similar limiting argument.) It remains to show that such paths always exist:

Lemma 3.5.2. *Any two points of \bar{X} can be joined by a path in $\text{geod}(\bar{X})$.*

Proof. Suppose $x, y \in \bar{X}$. Since every constant path lies in $\text{geod}(X)$, we can suppose that $x \neq y$. By Lemma 3.2.1, both x and y are accessible by smooth paths of finite length in X . From the geodesic convexity of X (Proposition 3.4.2) and Lemma 3.3.1, we see that x and y can be joined by a path in $\text{geod}(\bar{X})$. \square

In summary, we have shown:

Proposition 3.5.3. *For all $x, y \in \bar{X}$, there is a unique $\alpha \in \text{geod}(\bar{X})$ with $\pi(\alpha) = (x, y)$. Moreover $\text{length } \alpha = d(x, y)$. In fact, α is the unique constant-speed globally length-minimising path in \bar{X} from x to y .*

We can now use the term “geodesic” without ambiguity. As with X , we write $[x \rightarrow y]$ for the unique path in $\text{geod}(\bar{X})$ joining x to y . We write $[x, y] \subseteq \bar{X}$ for the image of $[x \rightarrow y]$. As before, $[x, y] = [y, x]$ and $[x, x] = \{x\}$. Note that for all $x, y \in \bar{X}$, we have $[x, y] = \{z \in \bar{X} \mid d(x, z) + d(z, y) = d(x, y)\}$.

Note that since (\bar{X}, d) is CAT(0), it follows that the distance function is convex (cf. Lemma 3.4.6). In particular, geodesics vary continuously on their endpoints, and so:

Proposition 3.5.4. *The map $\pi : \text{geod}(\bar{X}) \rightarrow \bar{X} \times \bar{X}$ is a homeomorphism.*

We remark that if we fix one endpoint, then geodesics vary in a C^1 fashion:

Proposition 3.5.5. *Given $a \in \bar{X}$, define $f_a : X \times (0, 1) \rightarrow X$ by $f_a(x, t) = [a \rightarrow x](t)$. Then f_a is C^1 .*

Proof. Clearly, if $a \in X$, then f_a is smooth. If $a \in \bar{X} \setminus X$, we choose a sequence of points $a_n \in X$ with $a_n \rightarrow a$, and check that the derivatives of the functions f_{a_n} converge. This can be done by considering Jacobi fields along $[x, a_n]$ (c.f. the case of horofunctions [HeI]). \square

4. The compactification.

In this chapter, we assume that X satisfies axioms (A) and (B). We shall describe the compactification $X_C = X \cup X_I$, where X_I is the “ideal sphere”. Thus, X_I may be thought of, set theoretically, as the union of $X_I^0 \equiv \bar{X} \setminus X$ and a set, X_I^∞ of asymptote classes of geodesic rays. We shall show that X_C is homeomorphic to a closed ball (Proposition 4.5.2.)

4.1. Geodesic rays. A *geodesic ray* based at $x \in \bar{X}$ is a path $\alpha : [0, \infty) \rightarrow \bar{X}$ such that $\alpha(0) = x$, and $\alpha((0, \infty)) \subseteq X$, and such that $\alpha|_{(0, \infty)}$ is a geodesic parameterised by arc length.

We know (Proposition 3.5.3) that geodesics are length-minimising in \bar{X} . In particular, α must be a proper map.

Suppose α, β are geodesic rays. By Lemma 3.4.6, the map

$$[t \mapsto d(\alpha(t), \beta(t))]$$

is convex. Thus, if $d(\alpha(t), \beta(t))$ is bounded above, then

$$d(\alpha(t), \beta(t)) \leq d(\alpha(0), \beta(0)) \quad \text{for all } t.$$

Definition. We say that the rays α and β are *asymptotic* if $d(\alpha(t), \beta(t))$ is bounded as $t \rightarrow \infty$.

Clearly this is an equivalence relation on the set of geodesic rays. Note that:

Lemma 4.1.1. *If α and β are asymptotic rays, then the map*

$$[t \mapsto d(\alpha(t), \beta(t))]$$

is monotonically non-increasing.

Corollary 4.1.2. *Two asymptotic rays based at the same point are equal.*

Proposition 4.1.3. *Suppose that β is a geodesic ray, and $x \in \bar{X}$. Then there is a (unique) geodesic ray based at x asymptotic to β .*

Proof. For this, we need only the convexity of the distance function (Lemma 3.4.6), and the completeness of \bar{X} .

For $n \in \mathbb{N}$, set $l_n = d(x, \beta(n))$. Let $\alpha_n : [0, l_n] \rightarrow \bar{X}$ be the geodesic from x to $\beta(n)$ parameterised by arc-length. Note that $n - l_0 \leq l_n \leq n + l_0$. From Lemma 3.4.6 applied to β and α_n , we see that $d(\alpha(t), \beta(t)) \leq l_0$ provided $t \leq n - l_0$. Thus, if $m \geq n \geq l_0$, then $d(\alpha_n(n - l_0), \alpha_m(n - l_0)) \leq 2l_0$. Now, by Lemma 3.4.6 applied to α_n and α_m , we see that for all $t \in [0, n - l_0]$, we have $d(\alpha_n(t), \alpha_m(t)) \leq \frac{2l_0 t}{n - l_0}$. Thus, for a fixed t , the sequence $(\alpha_n(t))$ is a Cauchy sequence, and so tends to a limit $\alpha(t) \in \bar{X}$. Now each α_n is length-minimising, and so $d(\alpha(t), \alpha(u)) = |t - u|$ for all $t, u \in [0, \infty)$. Thus by Proposition 3.5.3, we see that $\alpha((0, \infty)) \subseteq X$ and $\alpha|_{(0, \infty)}$ is geodesic. For all $n \geq t + l_0$, we have $d(\beta(t), \alpha_n(t)) \leq l_0$, and so $d(\alpha(t), \beta(t)) \leq l_0$. Thus α and β are asymptotic. \square

Now, let X_I^∞ be the set of asymptote classes of geodesic rays. We write X_I^0 for the set $\bar{X} \setminus X$, and define the *ideal sphere*, X_I , as a disjoint union $X_I = X_I^0 \sqcup X_I^\infty$. We write $X_C = X \sqcup X_I$ for the *compactification* of X , and $\iota : \bar{X} \rightarrow X_C$ for the natural inclusion. We shall describe the topology on these spaces in Section 4.3.

Suppose that $x \in \bar{X} \equiv X \cup X_I^0$ and that $y \in X_I^\infty$. Lemma 4.1.3 tells us that there is a unique geodesic ray β based at x and in the class y . We say that β *tends to* the point y . Write $[x, y] = \beta([0, \infty)) \cup \{y\} \subseteq X_C$, and refer to $[x, y]$ as the *geodesic joining* x to y . Given the existence and uniqueness of geodesics in \bar{X} , we have established that:

Lemma 4.1.4. *Given $(x, y) \in X_C \times X_C \setminus (X_I^\infty \times X_I^\infty)$, then there is a unique geodesic $[x, y]$ joining x to y .*

We may extend the notations \overrightarrow{xy} and $y\hat{x}z$ to the case where $x \in X$ and $y, z \in X_C \setminus \{x\}$.

Note that from the proof of Proposition 4.1.3, we see that if $z, x \in X$, $y \in X_I^\infty$, and $y_n \in [z, y] \cap X$ is a sequence of points tending to y , then the vectors $\overrightarrow{xy_n}$ tend to \overrightarrow{xy} in the unit tangent space at x .

If we fix $y \in X_I^\infty$, then the vector field $[x \mapsto \overrightarrow{xy}] : X \rightarrow TX$, is C^1 , where TX is the total tangent bundle to X . This may be proven using the convergence of Jacobi fields just as in the complete case. We may also define a positive-time flow $\phi : X \times [0, \infty) \rightarrow X$ along this field. Thus, $\phi(x, t) = \beta(t)$, where β is the geodesic ray based at x tending to y . As in the complete case, we have:

Proposition 4.1.5. *The flow $\phi : X \times [0, \infty) \rightarrow X$ is C^2 .*

4.2. Horofunctions. In this section, we describe the “horofunctions” (or “Busemann functions”) about a point $y \in X_I^\infty$. The results will be used again in Chapter 6, though, for the moment, it is something of a digression.

Fix $y \in X_I^\infty$. Suppose $a \in \bar{X}$. Let β be the geodesic ray based at a tending to y . Given any $x \in \bar{X}$, the function $[t \mapsto t - d(x, \beta(t))]$ is monotonically increasing in t . Moreover it is bounded above (by $d(x, a)$). It thus tends to a well-defined limit $h_a(x) = \lim_{t \rightarrow \infty} (t - d(x, \beta(t)))$. We see easily that $|h_a(x) - h_a(x')| \leq d(x, x')$ for all $x, x' \in \bar{X}$. Thus, $h_a : \bar{X} \rightarrow \mathbb{R}$ is continuous. Also, one can show that h_a is C^2 . This follows as in the complete case (see [HeI]). We refer to h_a as a *horofunction* about y .

To see that h_a is at least C^1 on X is elementary. For a fixed t , write $f_t(x) = t - d(x, \beta(t))$. Thus $f : X \rightarrow \mathbb{R}$ is smooth on X , and its gradient, $\text{grad } f_t$ at x equals $\overrightarrow{xy_t}$ where $y_t = \beta(t)$. From the Angle Comparison Theorem (Proposition 3.4.4) we can verify that $\overrightarrow{xy_t}$ tends to \overrightarrow{xy} as $t \rightarrow \infty$. Moreover, this convergence is uniform on compact subsets of X . Thus f is C^1 , and $\text{grad } f(x) = \overrightarrow{xy}$.

As a consequence, we may deduce that any two horofunctions about y differ by a constant.

Lemma 4.2.1. *If $a, b, x \in \bar{X}$, then $h_b(x) = h_b(a) + h_a(x)$.*

Proof. From the previous paragraph, we know that for all $x \in X$, we have $\text{grad}(h_b - h_a)(x) = 0$, and so $h_b - h_a$ is constant on X . By continuity, it is constant on all of \bar{X} . Since $h_a(a) = 0$, we must have $h_b(x) - h_a(x) = h_b(a)$ as required. \square

We remark that we do not really need the differentiable structure on X in order to deduce Lemma 4.2.1. In fact, it follows from the CAT(0) inequality. The important observation is that if we have a “long” rectangle in a CAT(0)-space, then the sum of the two diagonals is approximately equal to the sum

of the two long edges. More specifically, suppose $x, y, z, w \in \bar{X}$, are any four points, then $|d(x, y) + d(z, w) - d(y, z) - d(x, w)| \leq \frac{1}{R}(d(x, z)^2 + d(y, w)^2)$, where $R = \min(d(x, y), d(z, w), d(y, z), d(x, w))$. Here xz and yw are the “short” sides. The exact form of the right-hand term of the inequality is unimportant. We just need to note that if the rectangle is sufficiently long, while the lengths of the short sides remain bounded, then the first term can be made arbitrarily small. We leave the reader to work out the details of this, and relate it to the definition of horofunctions.

Suppose that h is a horofunction about y . We have seen that $|\text{grad } h| = 1$ everywhere, and so the level sets of h give us a codimension-1 foliation of X by C^2 submanifolds. Given $t \in \mathbb{R}$, write $S(t) = X \cap h^{-1}(t)$. We refer to $S(t)$ as a *horosphere* about y . Let $B(t) = X \setminus h^{-1}([t, \infty))$. Thus $B(t)$ is a closed convex subset of X with boundary $S(t)$. We call $B(t)$ a *horoball* about t .

Given a horoball B about y , we may define the *nearest point retraction* ρ of X onto B . Thus, for all $x \in X$, $\rho(x)$ is the nearest point on $[x, y] \cap B$ to x . We see that $\rho(x) = x$ for all $x \in B$, and $\rho(X \setminus B) = S = \partial B$. We have observed that S is a C^2 -submanifold. We have

Lemma 4.2.2. *The nearest point retraction $\rho|(X \setminus B) : X \setminus B \rightarrow S$ is C^2 .*

Proof. Let h be the horofunction with $h(S) = \{0\}$. Apply Proposition 4.1.5, noting that $\rho(x) = \phi(x, -h(x))$ for all $x \in X \setminus B$. \square

4.3. The compactified topology. Choose any basepoint $p \in X$, and let $T_p^1(X)$ be the unit tangent space at p . Now each vector in $T_p^1(X)$ determines the germ of a geodesic emanating from p . We may continue this geodesic until either we arrive at some point of X_I^0 , or until we form a geodesic ray tending to some point of X_I^∞ . Lemma 4.1.4 thus gives an identification of $X_I = X_I^0 \cup X_I^\infty$ with $T_p^1(X)$. Thus, X_I is given the topology of an $(n-1)$ -sphere. This topology turns out to be independent of the choice of basepoint $p \in X$. Moreover, it may be extended to give X_C the topology of a closed n -ball. In this, and the next two sections we give an account of this.

The identification $\bar{X} \cong X \cup X_I^0 \subseteq X_C$ gives us a metric d on $X \cup X_I^0$. We may extend this to a map $d : X_C \times X_C \rightarrow [0, \infty]$ by setting $d(x, x) = 0$ and $d(x, y) = \infty$ when $x \in X_I^\infty$ and $y \in X_C \setminus \{x\}$. Given $x \in X \cup X_I^0$, and $r \geq 0$, we write

$$N(x, r) = \{y \in X_C \mid d(x, y) \leq r\}.$$

If $p \in X$, write

$$C(p, x, r) = \{y \in X_C \mid d(x, [p, y]) \leq r\}.$$

In other words, $y \in C(p, x, r)$, if and only if $[p, y]$ meets $N(x, r)$. Clearly $N(x, r) \subseteq C(p, x, r)$. The following is a simple consequence of the CAT(0) inequality.

Lemma 4.3.1. *Suppose that $p \in X$ and $y \in X_I^\infty$. Given $z \in [p, y] \cap X$, and $r, r' > 0$, then there is some $w \in [p, y] \cap X$ such that $C(p, w, r') \subseteq C(p, z, r)$.*

We may now define a topology, $\tau(X_C, p)$, on X_C , relative to the point $p \in X$. We describe neighbourhood bases for points $y \in X_C$ as follows. If $y \in X$, we take as neighbourhood base the collection $\{N(y, \epsilon) \mid \epsilon > 0\}$. If $y \in X_I^0$, we take as neighbourhood base $\{C(p, y, \epsilon) \mid \epsilon > 0\}$. If $y \in X_I^\infty$, we take as neighbourhood base $\{C(p, x, \epsilon) \mid x \in [p, y] \cap X, \epsilon > 0\}$. Note that, in the last case, by Lemma 4.3.1, we could equally well take as neighbourhood base $\{C(p, x, r) \mid x \in [p, y] \cap X\}$ for any fixed $r > 0$. It is easily verified that these sets form the basis for a topology $\tau(X_C, p)$ on X_C . Clearly, its restriction to X agrees with the metric topology. However, its restriction to $X \cup X_I^0 \equiv \bar{X}$ is, in general, coarser than the metric topology. We aim to show that $\tau(X_C, p)$ is independent of $p \in X$. The following lemma will be used in several places in the rest of this paper.

Lemma 4.3.2. *Given $a \in X_I^0$, and $h, \eta > 0$, we can find $r > 0$ with the following property. Suppose $(y, z) \in (X_C \times X_C) \setminus (X_I^\infty \times X_I^\infty)$ and $x \in N(a, r) \cap X$. If $d(a, [y, z]) \geq h$, then $y\hat{x}z \leq \eta$.*

Proof. By hypothesis (B), we can find $K, h_0 > 0$ such that if $d(x, a) \leq h_0$, then $\kappa(x) \leq -1/K^2 d(x, a)$. Suppose $h, \eta > 0$. Let $r > 0$, depending on h and η , be as determined below. We can assume that $r < h' = \min(h, h_0)$. Let $R = h' - r$.

Now let x, y, z be as in the statement of the lemma. For the moment, we assume that $y, z \in X \cup X_I^0$. The general case will follow by continuity. We want that $y\hat{x}z \leq \eta$.

Since $d(a, [y, z]) \geq h$, we have that $x \notin [y, z]$. Let $\theta = y\hat{x}z$. We can suppose that $\theta > 0$. Now, x, y, z are the vertices of a ruled surface obtained by joining x to each point $w \in [y, z]$ by a geodesic $[x, w]$. Thus $P = \bigcup\{[x, w] \mid w \in [y, z]\}$ is a non-positively curved 3-gon. In fact, if q lies in $\text{int } P = P \setminus \partial P$, then the intrinsic curvature $\kappa_P(q)$ is at most $\kappa(q)$. By Gauss-Bonnet, we find that

$$-\int_P \kappa(q) d\omega(q) \leq -\int_P \kappa_P(q) d\omega(q) \leq \pi,$$

where $d\omega$ is the area element of P .

Suppose $t \in (0, R)$, and $w \in [y, z] \setminus \{y, z\}$. Let $q(w, t)$ be the point of $[x, w]$ with $d(x, q(w, t)) = t$. (Figure 4a.) Now $d(a, q(w, t)) \leq d(x, a) +$

$d(x, q(w, t)) \leq r + t$. Thus $-\kappa(q(w, t)) \geq 1/K^2 d(a, q(w, t))^2 \geq 1/K^2 (r + t)^2$. By the Angle Comparison Theorem (Proposition 3.4.4), we see that the path traced out by $q(w, t)$ as w moves on $[y, z]$ has length at least θt . Thus,

$$\begin{aligned} \pi &\geq - \int_P \kappa(p) d\omega(q) \\ &\geq \int_0^R \frac{\theta t}{K^2 (r + t)^2} dt \\ &= \frac{\theta}{K^2} (-\log(r/h') + (r/h') - 1) \\ &= \frac{\theta}{K^2} f(r/h') \end{aligned}$$

where $f(s) = s - \log s - 1$. Now $f(s) \rightarrow \infty$ as $s \rightarrow 0$, and so if r/h' is sufficiently small, we have $\theta \leq \pi K^2 / f(r/h') \leq \eta$ as required.

To deal with the case where $y \in X_I^\infty$ and $z \in X \cup X_I^0$, choose a sequence of points $y_n \in [y, z] \cap X$ with $y_n \rightarrow y$. As observed in Section 4.1, we have $\overrightarrow{xy_n} \rightarrow \overrightarrow{xy}$, and so the general case follows by continuity. \square

Proposition 4.3.3. *The topology $\tau(X_C, p)$ is independent of $p \in X$.*

Proof. Suppose $p, p' \in X$. Certainly $\tau(X_C, p)$ and $\tau(X_C, p')$ agree on X . We thus want to show that for all $y \in X_I$, the neighbourhood bases with respect to p and p' , as described above, are equivalent.

Suppose, first, that $y \in X_I^\infty$. Let $l = d(p, p')$ and suppose $r > 0$. Given $x \in [p, y] \cap X$, we want to find $x' \in [p', y] \cap X$ with $C(p', x', r) \subseteq C(p, x, r)$. By Lemma 4.3.1, we have $z \in [p, y]$ so that $C(p, z, r + 2l) \subseteq C(p, x, r)$. By Lemma 4.1.1, we can find $x' \in [p', y]$ with $d(z, x') \leq l$. If $w \in C(p', x', r)$ so that $d(x', [p', w]) \leq r$, then the CAT(0) inequality, applied to the triangle wpp' , tells us that $d(x', [p, w]) \leq d(x', [p', w]) + d(p, p') \leq r + l$. Thus $d(z, [p, w]) \leq (r + l) + d(z, x') \leq r + 2l$, and so $w \in C(p, z, r + 2l)$. We have shown that $C(p', x', r) \subseteq C(p, x, r)$ as required.

Now suppose that $y \in X_I^0$. Given $\epsilon > 0$, we want to find $\epsilon' > 0$ so that $C(p', y, \epsilon') \subseteq C(p, y, \epsilon)$. We can assume that $\epsilon < d(y, p')$. Let $h_0 = d(y, [p, p'])$ and $h = \min(h_0, \epsilon)$. Lemma 4.3.2 gives us some $\epsilon' > 0$ such that if $x \in N(y, \epsilon') \cap X$ and $(a, b) \in (X_C \times X_C) \setminus (X_I^\infty \times X_I^\infty)$, then $d(y, [a, b]) \leq h$ or $a\hat{x}b \leq \pi/3$. Now suppose that $z \in C(p', y, \epsilon')$, so that there some $x \in [p', z] \cap N(y, \epsilon') \cap X$. Since $d(y, [p, p']) \geq h$, we have $p\hat{x}p' \leq \pi/3$. Thus $p\hat{x}z \geq \pi - \pi/3 = 2\pi/3$ and so $d(y, [p, z]) \leq h \leq \epsilon$. Thus $z \in C(p, y, \epsilon)$. We have shown that $C(p', y, \epsilon') \subseteq C(p, y, \epsilon)$. \square

We shall write $\tau(X_C)$ for the topology thus defined on X_C . The following is easily verified.

Proposition 4.3.4. *The natural inclusion $\iota : \bar{X} \rightarrow X_C$ is continuous.*

Here, and in the rest of this paper, we adopt the convention that \bar{X} has the metric topology, whereas $X \cup X_I^0$ has the subspace topology induced from $\tau(X_C)$.

It is not very hard to see that $(X_C, \tau(X_C))$ is compact hausdorff. We shall not give a direct proof here, since we show, in the next two sections, that it is homeomorphic to a closed n -dimensional ball.

4.4. Starlike sets. Let \mathbb{E}^n be n -dimensional euclidean space, and let $\underline{0} \in \mathbb{E}^n$ be any point. We identify the unit tangent space $T_0^1 \mathbb{E}^n$ with the unit sphere S^{n-1} . We may identify \mathbb{E}^n with $(S^{n-1} \times [0, \infty))/\sim$, where $(\xi, 0) \sim (\zeta, 0)$ for all $\xi, \zeta \in S^{n-1}$, otherwise equivalence classes are single points. We may identify the compactified space \mathbb{E}_C^n with $(S^{n-1} \times [0, \infty))/\sim$. We write $\langle \xi, t \rangle$ for the \sim -class of (ξ, t) . Thus, $\underline{0} = \langle \xi, 0 \rangle$ for all $\xi \in S^{n-1}$.

Note that a subset $\Sigma \subseteq \mathbb{E}^n$ is open and starlike about $\underline{0}$ if and only if it has the form $\{\langle \xi, t \rangle \mid 0 \leq t < f(\xi)\}$, where $f : S^{n-1} \rightarrow (0, \infty]$ is lower-semicontinuous. We write

$$\Sigma_C = \{\langle \xi, t \rangle \in \mathbb{E}_C^n \mid 0 \leq t \leq f(\xi)\}.$$

Thus, Σ_C is also starlike about $\underline{0}$, and a subset of the closure of Σ in \mathbb{E}_C^n . Write $\Sigma_I = \Sigma_C \setminus \Sigma = \{\langle \xi, t \rangle \in \mathbb{E}_C^n \mid t = f(\xi)\}$. (Note that this notation is consistent with that previously defined if $\Sigma = \mathbb{E}^n = X$.) We put a topology $\tau(\Sigma_C)$ on Σ_C as follows. We demand that the subspace topology on Σ induced from $\tau(\Sigma_C)$ agrees with that induced from \mathbb{E}^n . If $\langle \xi, t \rangle \in \Sigma_I$, we take as a base of neighbourhoods the collection $\{D(U, u)\}$ where

$$D(U, u) = \{\langle \zeta, v \rangle \in \Sigma_C \mid \zeta \in U, v \geq u\}$$

and U ranges over all neighbourhoods of ζ in S^{n-1} , and u ranges over the interval $(0, t)$. Thus, in general, the topology $\tau(\Sigma_C)$ on Σ_C is coarser than the subspace topology induced from $(\mathbb{E}_C^n, \tau(\mathbb{E}_C^n))$. (Note that $\tau(\mathbb{E}_C^n)$ agrees with our previous definition with $\Sigma = \mathbb{E}^n = X$.)

Now, if $a, b \in (0, \infty]$ and $h : [0, a] \rightarrow [0, b]$ is a homeomorphism, with $h(0) = 0$, then the map $\hat{h} = [\langle \xi, t \rangle \mapsto \langle \xi, h(t) \rangle]$ gives a homeomorphism of the ball $N(\underline{0}, a)$ onto $N(\underline{0}, b)$ (where $N(\underline{0}, \infty) = \mathbb{E}_C^n$). Moreover, if $\Sigma \subseteq N(\underline{0}, a) \subseteq \mathbb{E}^n$ is open and starlike about $\underline{0}$, then so is $\Sigma' = \hat{h}(\Sigma)$. Also, $\Sigma'_C = \hat{h}(\Sigma_C)$, and $\hat{h}|_{\Sigma_C} : (\Sigma_C, \tau(\Sigma_C)) \rightarrow (\Sigma'_C, \tau(\Sigma'_C))$ is a homeomorphism.

Write B^n for the closed unit n -ball (as a manifold), and write $\text{int } B^n = B^n \setminus \partial B^n$ for its interior.

Lemma 4.4.1. *Suppose $\Sigma \subseteq \mathbb{E}^n$ is open and starlike. Then, the pair*

(Σ_C, Σ) , with the topology given by $\tau(\Sigma_C)$, is homeomorphic to the pair $(B^n, \text{int } B^n)$.

Proof. Let $\mathbb{E}_\infty^n = \mathbb{E}^n \cup \{\underline{\infty}\}$ be the one point compactification of \mathbb{E}^n . Let $B_0 = N(\underline{0}, 1) \subseteq \mathbb{E}^n \subseteq \mathbb{E}_\infty^n$, be the unit ball about $\underline{0}$. From the discussion prior to the statement of the lemma, we see that we can assume that $\Sigma \subseteq B_0$.

Let $g : \mathbb{E}^n \rightarrow \mathbb{E}_\infty^n \setminus \{\underline{0}\}$ be the inversion given by $g(\langle \xi, t \rangle) = \langle \xi, 1/t \rangle$ for $t > 0$ and $g(\underline{0}) = \underline{\infty}$. Restricted to B_0 , the map g gives a homeomorphism of B_0 onto $B_\infty = \mathbb{E}_\infty^n \setminus \text{int } B_0$. Let $\Omega = g(\Sigma)$, and $\Omega_C = g(\Sigma_C)$. Let $\partial\Omega$ be the topological boundary of Ω in \mathbb{E}_∞^n , so that $\partial\Omega \subseteq B_\infty \setminus \{\underline{\infty}\}$ and $\Omega_C = \Omega \cup \partial\Omega$. We define the map $\rho : \Omega_C \setminus \{\underline{\infty}\} \rightarrow [0, \infty)$ by $\rho(x) = d_{\text{euc}}(x, \partial\Omega)$, where d_{euc} is the euclidean distance.

Certainly, ρ is continuous on Ω , and $\rho(x) = 0$ if and only if $x \in \Omega_C \setminus \Omega$. Moreover, if $\langle \xi, t \rangle, \langle \xi, u \rangle \in \Omega$ with $t < u$, then $\rho(\langle \xi, t \rangle) < \rho(\langle \xi, u \rangle)$. We now define $h : \Omega_C \rightarrow \mathbb{E}_\infty^n$ by $h(\langle \xi, t \rangle) = \langle \xi, 1 + \rho(\langle \xi, t \rangle) \rangle$ and $h(\underline{\infty}) = \underline{\infty}$. Clearly, h maps Ω_C bijectively onto B_∞ , and $h|_\Omega$ is a homeomorphism onto $\text{int } B_\infty$. It follows that $j = g^{-1}hg$ maps Σ_C bijectively onto B_0 , and that $j|_\Sigma$ is a homeomorphism onto $\text{int } B_0$. Moreover, a simple exercise shows that j is, in fact, a homeomorphism from $(\Sigma_C, \tau(\Sigma_C))$ to B_0 . \square

With a bit more work, one can make a stronger statement, namely:

Lemma 4.4.2. *Suppose that $\Sigma \subseteq \mathbb{E}^n$ is open and starlike. Then, there is a homeomorphism of (Σ_C, Σ) to $(B^n, \text{int } B^n)$ whose restriction to Σ is a smooth diffeomorphism onto $\text{int } B^n$.*

Proof (Sketch). One way to do this is to approximate the map ρ , from the proof of Lemma 4.4.1, by a smooth map, ρ' , with $\partial\rho'/\partial t > 0$ everywhere on $\Omega \setminus \{\underline{\infty}\}$. Define $\sigma : B_\infty \setminus \{\underline{\infty}\} \rightarrow (0, \infty)$ by $\rho(\langle \xi, \sigma(\langle \xi, t \rangle) \rangle) = t$. We want to smooth out σ on $\text{int } B_0 \setminus \{\underline{\infty}\}$ to get a smooth map σ' with $\partial\sigma'/\partial t > 0$. Given any positive integer n , define $\sigma_n : S^{n-1} \rightarrow (0, \infty)$ by $\sigma_n(\xi) = \sigma(\langle \xi, 1 + 1/n \rangle)$. We approximate each σ_n by a smooth map $\sigma'_n : S^{n-1} \rightarrow (0, \infty)$ so that $|\sigma'_n(\xi) - \sigma_n(\xi)| \leq 1/2n(n+1)$ for all $\xi \in S^{n-1}$. In this way, we arrange that $\sigma'_{n+1}(\xi) < \sigma_n(\xi)$ for all $\xi \in S^{n-1}$. By interpolation, we get a smooth function $\sigma' : B(\underline{0}, 2) \setminus B_0 \rightarrow (0, \infty)$ so that $\sigma'(\langle \xi, 1 + 1/n \rangle) = \sigma'_n(\xi)$ and $\partial\sigma'/\partial t > 0$. We now extend to a smooth function $\sigma' : \text{int } B_\infty \setminus \{\underline{\infty}\} \rightarrow (0, \infty)$ so that $\partial\sigma'/\partial t > 0$ everywhere, and $\sigma'(\langle \xi, t \rangle) = t$ for all sufficiently large t . The identity $\rho'(\langle \xi, \sigma'(\langle \xi, t \rangle) \rangle) = t$ allows us to define a smooth map $\rho' : \Omega \setminus \{\underline{\infty}\} \rightarrow (0, \infty)$, with $\partial\rho'/\partial t > 0$. We extend ρ' to a map $\Omega_C \setminus \{\underline{\infty}\} \rightarrow [0, \infty)$ by setting $\rho'(\Omega_C \setminus \Omega) = \{0\}$. We now proceed as in Lemma 4.4.1. It may be verified that the map $j' : \Sigma_C \rightarrow B_0$ thus defined is a diffeomorphism on Σ . \square

4.5. The logarithm map. In this section, we relate the discussion of star-like sets to our compactified manifold X_C .

Choose any point $p \in X$ and then identify the unit tangent space $T_p^1(X)$ with S^{n-1} via an isometry $\phi : T_p^1(X) \rightarrow S^{n-1}$. Recall the description of \mathbb{E}_C^n as a quotient of $S^{n-1} \times [0, \infty]$, given in the previous section. We define a map $\log : X_C \rightarrow \mathbb{E}_C^n$ as follows. Set $\log(p) = \underline{0}$, and for $x \in X_C \setminus \{p\}$, set $\log(x) = \langle \phi(\vec{px}), d(p, x) \rangle$, where $d(p, x) = \infty$ for $x \in X_I^\infty$. By Lemma 4.1.4, we see that \log is a bijection onto its image $\Sigma_C(X) = \log(X_C) \subseteq \mathbb{E}_C^n$. Moreover $\log|_X$ gives a diffeomorphism of X onto $\Sigma(X) = \log(X) \subseteq X$. This follows as in the complete case. Thus, Σ is open and starlike about $\underline{0}$. Also, we have that, set theoretically, $(\Sigma(X))_C = \Sigma_C(X)$.

Lemma 4.5.1. *The map $\log : (X_C, \tau(X_C)) \rightarrow (\Sigma_C(X), \tau(\Sigma_C(X)))$ is a homeomorphism.*

Proof. The fact that \log is continuous is a simple consequence of the Angle Comparison Theorem (Proposition 3.4.4). We have also noted that $\log|_X$ is a diffeomorphism. It remains therefore to show that $\exp = \log^{-1} : \Sigma_C(X) \rightarrow X_C$ is continuous at all points of $\Sigma_C(X) \setminus \Sigma(X)$.

Suppose that $y = \exp(\langle \xi, t \rangle) \in X_I^0$. Given $r \in (0, t)$, let $x = \exp(\langle \xi, t - r/2 \rangle)$. Thus, $x \in [p, y]$ with $d(x, y) = r/2$. By the continuity of $\exp|_X$, we can find $U \subseteq S^{n-1}$ which is a neighbourhood of ξ , such that if $\xi' \in U$, then $\langle \xi', t - r/2 \rangle \in \Sigma$ and $d(x, \exp(\langle \xi', t - r/2 \rangle)) \leq r/2$. It follows that $d(y, \exp(\langle \xi', t - r/2 \rangle)) \leq r/2$, and so $\exp(\langle \xi', t' \rangle) \in C(p, y, r)$ whenever $t' \geq t - r/2$ and $\langle \xi', t' \rangle \in \Sigma_C(X)$. This shows that $\exp(D(U, t - r/2)) \subseteq C(p, y, r)$, and so \exp is continuous at $\langle \xi, t \rangle$.

The case where $\exp(\langle \xi, t \rangle) \in X_I^\infty$ is similar. \square

Putting Lemma 4.5.1 together with Lemma 4.4.2, we have:

Proposition 4.5.2. *The pair (X_C, X) , in the topology $\tau(X_C)$, is homeomorphic to the pair $(B^n, \text{int } B^n)$ where B^n is the unit n -dimensional ball, and $\text{int } B^n$ is its interior. Moreover, we can arrange that the homeomorphism restricted to X gives a smooth diffeomorphism onto $\text{int } B^n$.*

In particular, we see that X_C is compact metrisable.

5. Continuity properties.

As in the previous chapter, we are assuming that X satisfies axioms (A) and (B). Our aim here is to investigate how geodesics move as we vary the endpoints.

5.1. Lower semicontinuity of the distance function. We extend the metric d on $\bar{X} \equiv X \cup X_I^0$ to a map $d : X_C \times X_C \rightarrow [0, \infty]$ by setting $d(x, x) = 0$ and $d(x, y) = \infty$ if $x \in X_I^\infty$ and $y \in X_C \setminus \{x\}$. We claim that this map is lower-semicontinuous on $X_C \times X_C$ given the product topology $\tau(X_C) \times \tau(X_C)$.

Lemma 5.1.1. *Suppose that $x, y \in X \cup X_I^0$ and $x \neq y$. Given and $h > 0$, there exist neighbourhoods U of x and V of y in $\tau(X_C)$ such that if $u \in U$ and $v \in V$, and $(u, v) \notin X_I^\infty \times X_I^\infty$, then $d(x, [u, v]) \leq h$ and $d(y, [u, v]) \leq h$. In fact, we can find $u', v' \in [u, v]$ with $d(x, u') \leq h$, $d(y, v') \leq h$ and $u' \in [u, v']$.*

Proof. We shall deal with the case where x and y both lie in X_I^0 . The remaining cases are simpler. We can assume that $h < \frac{1}{4}d(x, y)$. By Lemma 4.3.2, there is some $\epsilon_1 > 0$ such that if $a \in N(x, \epsilon_1) \cap X$ and $(z, w) \in (X_C \times X_C) \setminus (X_I^\infty \times X_I^\infty)$, then either $d(x, [z, w]) \leq h$, or else $z\hat{a}w \leq \pi/2$. There is a similar constant ϵ_2 corresponding to b . Let $\epsilon = \min(\epsilon_1, \epsilon_2, h)$. Let $U = C(y, x, \epsilon)$ and $V = C(x, y, \epsilon)$. From the definition $\tau(X_C) = \tau(X_C, x) = \tau(X_C, y)$ we see that U, V are neighbourhoods of x, y respectively in $\tau(X_C)$. Suppose that $u \in U$ and $v \in V$, so that $d(x, [u, y]) \leq \epsilon$ and $d(y, [v, x]) \leq \epsilon$. Choose $a \in [u, y] \cap N(x, \epsilon) \cap X$ and $b \in [v, x] \cap N(x, \epsilon) \cap X$. By the Angle Comparison Theorem (Proposition 3.4.4), we see that $a\hat{b}x \leq \pi/3$, and so $a\hat{b}v \geq 2\pi/3 > \pi/2$. Thus $d(y, [a, v]) \leq h$. So, again by the Angle Comparison Theorem, we have $v\hat{a}y \leq \pi/3$ and so $u\hat{a}v \geq 2\pi/3 > \pi/2$. Thus $d(x, [u, v]) \leq h$. Similarly, $d(y, [u, v]) \leq h$.

Note that $d(x, y) \geq d(u, x) + d(x, y) - 2\epsilon$. Thus if $u', v' \in [u, v]$ with $d(x, u') \leq h$ and $d(y, v') \leq h$ then $d(u, u') \geq d(u, v') + d(x, y) - 2\epsilon - 2h \geq d(u, v')$ since $\epsilon \leq h$ and $4h \leq d(x, y)$. If $u \notin X_I^\infty$, this shows that $u' \in [u, v']$. If $u \in X_I^\infty$, choose $u_0 \in [u, u'] \cap [u, v'] \cap X$, and apply the same argument with u_0 replacing u . \square

Lemma 5.1.2. *Suppose $x \in X_I^0$, $y \in X_I^\infty$ and $z \in [x, y] \cap X$. Given $h > 0$, then there is some $\epsilon > 0$ and a neighbourhood V about y in $\tau(X_C)$ such that if $u \in N(x, \epsilon)$ and $v \in V$, then $d(z, [u, v]) \leq h$.*

Proof. Take $\epsilon = h/2$. By the definition of $\tau(X_C)$, the set $V = C(x, z, \epsilon)$ is a neighbourhood of y . Suppose $v \in V$ and $u \in N(x, \epsilon)$. Then $d(z, [x, v]) \leq \epsilon$, and so by CAT(0) applied to xuv , we find that $d(z, [u, v]) \leq 2\epsilon \leq h$. \square

Lemma 5.1.3. *Suppose $x \in X \cup X_I^0$ and $y \in X_I^\infty$ and $z \in [x, y] \cap X$. Given any $h > 0$, there are neighbourhoods U of x and V of y in $\tau(X_C)$ such that if $u \in U$ and $v \in V$ and $(u, v) \notin X_I^\infty \times X_I^\infty$, then $d(x, [u, v]) \leq h$ and $d(z, [u, v]) \leq h$. Moreover, we can find $u', v' \in [u, v]$ with $d(x, u') \leq h$ and*

$d(z, v') \leq h$ and $u' \in [u, v']$.

Proof. As with Lemma 5.1.1. Use Lemma 5.1.2. \square

Proposition 5.1.4. *The map $d : X_C \times X_C \rightarrow [0, \infty]$ is lower semicontinuous, where $X_C \times X_C$ is given the product topology $\tau(X_C) \times \tau(X_C)$.*

Proof. Suppose $x, y \in X_C$. If $x = y$, then $d(x, y) = 0$ and there is nothing to prove. If $x \in X \cup X_I^0$ and $y \in X_C \setminus \{x\}$, the result follows from Lemmas 5.1.1 and 5.1.3. The only remaining case is where $x, y \in X_I^\infty$ and $x \neq y$, so that $d(x, y) = \infty$. Choose any $p \in X$. Let $\theta = x\hat{p}y > 0$. Given any $r > 0$, let $R = r \operatorname{cosec}(\theta/4)$. Since $\tau(X_C) = \tau(X_C, p)$, by applying the Angle Comparison Theorem (Proposition 3.4.4), we can find neighbourhoods U of x and V of y such that if $u \in U$ and $v \in V$, then $d(p, u) \geq R$, $d(p, v) \geq R$, $x\hat{p}v \leq \theta/4$ and $y\hat{p}v \leq \theta/4$. Thus $u\hat{p}v \geq \theta/2$ and so, again by angle comparison, $d(u, v) \geq r$. \square

5.2. The Hausdorff topology. We have seen that X_C is homeomorphic to a ball and hence metrisable. A metric on X_C induces a Hausdorff distance on the set, $\mathcal{C}(X_C)$, of all closed subsets of X_C and hence a topology on $\mathcal{C}(X_C)$. Since X_C is compact, it's not hard to see that the topology on $\mathcal{C}(X_C)$ is independent of the choice of metric on X_C . We call this topology the *Hausdorff topology* on $\mathcal{C}(X_C)$.

A more natural description of the Hausdorff topology is in terms of uniformities (see [K]). Here we shall deal only with bases of uniformities. Given a set Y , write $\Delta = \Delta(Y) \subseteq Y \times Y$ for the diagonal $\{(x, x) \mid x \in Y\}$. Given a subset $W \subseteq Y \times Y$, write $W^2 = \{(x, y) \in Y \times Y \mid (\exists z \in Y)((x, z) \in W, (z, y) \in W)\}$. We say that a subset $W \subseteq Y \times Y$ is *symmetric* if $(x, y) \in W$ whenever $(y, x) \in W$. A collection \mathscr{W} of symmetric subsets of $Y \times Y$ form a *uniform basis* for Y if the following hold:

- (1) $\Delta \subseteq W$ for all $W \in \mathscr{W}$.
- (2) For all $W_1, W_2 \in \mathscr{W}$, there is some $W_3 \in \mathscr{W}$ with $W_3 \subseteq W_1 \cap W_2$.
- (3) For all $W \in \mathscr{W}$, there is some $V \in \mathscr{W}$ with $V^2 \subseteq W$.

Two such bases \mathscr{W}_1 and \mathscr{W}_2 are *equivalent* if for all $W_1 \in \mathscr{W}_1$ there is some $W_2 \in \mathscr{W}_2$ with $W_2 \subseteq W_1$, and for all $W'_2 \in \mathscr{W}_2$ there is some $W'_1 \in \mathscr{W}_1$ with $W'_1 \subseteq W'_2$. Thus, two bases give rise to the same uniformity if and only if they are equivalent. (For our purposes, we can define a uniformity as an equivalence class of bases.)

Given a subset $W \subseteq Y \times Y$ and a subset $A \subseteq Y$, write $WA = \{x \in Y \mid (\exists y \in A)((x, y) \in W)\}$. Thus if $\Delta \subseteq W$, then $A \subseteq WA$.

A uniform basis \mathscr{W} on Y induces a topology on Y , where a neighbourhood of the point $x \in Y$ is given by $\mathscr{W}\{x\} = \{W\{x\} \mid W \in \mathscr{W}\}$. This topology depends only on the uniformity. It is hausdorff if and only if $\bigcap \mathscr{W} = \Delta$.

Note that a metric d on Y induces a uniformity with basis $\{\{(x, y) \in Y \times Y \mid d(x, y) \leq \epsilon\} \mid \epsilon > 0\}$. This uniformity, in turn, induces the metric topology. If Y is compact, then this is the unique uniformity of Y inducing the metric topology.

Suppose that \mathscr{W} is a uniform basis on Y . Write $\mathscr{C}(Y)$ for the set of subsets that are closed in the induced topology. Given $W \in \mathscr{W}$, write $P(W) = \{(A, B) \in \mathscr{C}(Y) \times \mathscr{C}(Y) \mid A \subseteq WB, B \subseteq WA\}$, and set $P(\mathscr{W}) = \{P(W) \mid W \in \mathscr{W}\}$. One checks that $P(\mathscr{W})$ is a uniform basis on $\mathscr{C}(Y)$. If (Y, \mathscr{W}) is hausdorff (respectively metrisable) then $(\mathscr{C}(Y), P(\mathscr{W}))$ is hausdorff (metrisable). We refer to the topology induced on $\mathscr{C}(Y)$ by $P(\mathscr{W})$ as the *Hausdorff topology*.

Since X_C is compact metrisable, it admits a unique uniformity, and so $\mathscr{C}(X_C)$ has a well-defined Hausdorff topology. In the next section shall show that geodesics vary continuously in this topology. We spend the rest of this section giving an explicit description of the uniformity on X_C .

Fix $p \in X$, and suppose that $A \subseteq X \cup X_I^0$. Given $\epsilon > 0$, define $\Omega(p, A, \epsilon) \subseteq X_C \times X_C$ as follows. The pair (x, y) lies in $\Omega(p, A, \epsilon)$ if either there is some $a \in A$ with $d(a, [p, x]) \leq \epsilon$ and $d(a, [p, y]) \leq \epsilon$, or else if $x, y \in X \cup X_I^0$ and $d(x, y) \leq 2\epsilon$.

Clearly $\Omega(p, A, \epsilon)$ is symmetric and if $B \subseteq A$ and $\delta \leq \epsilon$, then $\Omega(p, B, \delta) \subseteq \Omega(p, A, \epsilon)$.

Lemma 5.2.1. *For all $A \subseteq X \cup X_I^0$ and $\epsilon > 0$, we have $\Omega(p, A, \epsilon)^2 \subseteq \Omega(p, A, 3\epsilon)$.*

Proof. Suppose $(x, y), (y, z) \in \Omega(p, A, \epsilon)$. There are three cases.

- (1) There are points $a, b \in A$, $a_0 \in [p, x]$, $a_1, b_1 \in [p, y]$ and $b_0 \in [p, z]$ with $d(a, a_i) \leq \epsilon$ and $d(b, b_i) \leq \epsilon$ for $i = 0, 1$. Without loss of generality, we have $d(p, b_1) \geq d(p, a_1)$. (Figure 5a).

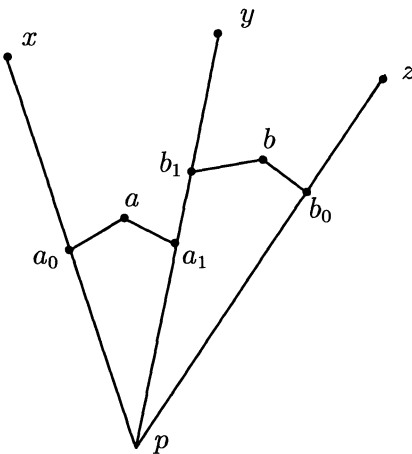


Figure 5a.

Applying CAT(0) to pb_0b_1 , we have $d(a_1, [p, z]) \leq 3\epsilon$. Thus $(x, z) \in \Omega(p, A, 3\epsilon)$.

- (2) $d(y, z) \leq 2\epsilon$ and there is some $a \in A$ with $d(a, [p, x]) \leq \epsilon$ and $d(a, [p, y]) \leq \epsilon$. Applying CAT(0) to pyz , we find that $d(a, [p, z]) \leq 3\epsilon$, and so $(x, z) \in \Omega(p, A, \epsilon)$.
- (3) If $d(x, y) \leq 2\epsilon$ and $d(y, z) \leq 2\epsilon$, then $d(x, z) \leq 4\epsilon$ and so $(x, z) \in \Omega(p, A, 2\epsilon)$.

□

Given $r > 0$, write $A(p, r) = X_I^0 \cup (X \setminus \text{int } N(p, r))$, and set $W(p, r, \epsilon) = \Omega(p, A(p, r), \epsilon)$. Clearly $\Delta \subseteq W(p, r, \epsilon)$ for all $r > 0$ and $\epsilon > 0$. Let $\mathscr{W} = \mathscr{W}_p = \{W(p, r, \epsilon) \mid r > 0, \epsilon > 0\}$. Applying Lemma 5.2.1, we see that \mathscr{W} is a uniform base on X_C .

Lemma 5.2.2. *The uniform base \mathscr{W}_p induces the topology $\tau(X_C)$ on X_C .*

Proof. We need to check that if $x \in X_C$, then $\mathscr{W}\{x\}$ gives a neighbourhood base for x in $\tau(X_C) = \tau(X_C, p)$.

Case (1): $x \in X$.

If $\epsilon < d(X_I^0, [x, p])$ and $r > d(x, p) + \epsilon$, then $W(p, r, \epsilon)\{x\} = N(x, \epsilon)$.

Case (2): $x \in X_I^0$.

Clearly $C(p, x, \epsilon) \subseteq W(p, r, \epsilon)\{x\}$ for all $r > 0$ and $\epsilon > 0$. Now, $[p, x] \cap X_I^0 = \{x\}$. Given any $\epsilon \in (0, d(p, x))$, let $y \in [p, x]$ be the point with $d(x, y) = \epsilon/3$. Let $\delta = \delta(\epsilon) = \frac{1}{2}d(X_I^0, [p, y]) > 0$, so $\delta \leq \epsilon/6$. Now, suppose $r > d(p, x) + \delta$. If $z \in W(p, r, \delta)\{x\}$, then either $d(z, x) \leq 2\delta \leq \epsilon$, and so $z \in C(p, x, \epsilon)$, or else there is some $a \in A(p, r)$ with $d(a, [p, x]) \leq \delta$ and $d(a, [p, z]) \leq \delta \leq \epsilon/3$. Since $r > d(p, x) + \delta$, we must have $a \in X_I^0$, and so $d(x, a) \leq \delta + \epsilon/3 \leq 2\delta/3$. It follows that $d(x, [p, z]) \leq 2\epsilon/3 + \epsilon/3 = \epsilon$, and again we have $z \in C(p, x, \epsilon)$. We have shown that $W(p, r, \delta)\{x\} \subseteq C(p, x, \epsilon)$.

Case (3): $x \in X_I^\infty$.

Given $r > 0$, take $y \in [p, x]$ with $d(p, y) = r$. Then $C(p, r, \epsilon)\{x\} \subseteq W(p, r, \epsilon)\{x\}$ for all $\epsilon > 0$.

Conversely, suppose $y \in [p, x]$. Let $r = d(p, y)$, and let $\delta = \delta(r) = \frac{1}{2}d(X_I^0, [p, y]) > 0$. Suppose $\epsilon \in (0, \delta)$, and $z \in W(p, r, \epsilon)\{x\}$. Then, there is some $a \in A(p, r)$ with $d(a, [p, y]) \leq \epsilon \leq \delta$ and $d(a, [p, z]) \leq \epsilon$. If $a \in X_I^0$, then $d(a, [p, y]) > \delta$ and so $d(a, [x, y]) \leq \epsilon \leq 2\epsilon$. If $a \notin X_I^0$, then $d(p, a) \geq r$, and so again, $d(a, [x, y]) \leq 2\epsilon$. Applying CAT(0), we find that $d(y, [p, z]) \leq 3\epsilon$ and so $z \in C(p, y, 3\epsilon)$. Thus $W(p, r, \epsilon)\{x\} \subseteq C(p, y, 3\epsilon)$. □

It follows that the uniform base \mathscr{W}_p defines the unique uniformity on X_C inducing the topology $\tau(X_C)$. In particular, \mathscr{W}_p and \mathscr{W}_q are equivalent for all $p, q \in X$.

5.3. Continuity of geodesics. By Lemma 4.1.4, any pair of points $(x, y) \in (X_C \times X_C) \setminus (X_I^\infty \times X_I^\infty)$ may be joined by a unique geodesic $[x, y]$.

Lemma 5.3.1. *Each geodesic $[x, y]$ is closed X_C .*

Proof. We can assume $x \neq y$. Choose $p \in [x, y] \setminus \{x, y\}$. If $z_n \in [x, y]$ is any sequence, it is easily seen that some subsequence converges in $\tau(X_C, p)$ to a limit in $[x, y]$. \square

We give $\mathcal{C}(X_C)$ the Hausdorff topology as described in Section 5.2. We give $X_C \times X_C$ the product topology $\tau(X_C) \times \tau(X_C)$.

Proposition 5.3.2. *The map $[(x, y) \mapsto [x, y]] : (X_C \times X_C) \setminus (X_I^\infty \times X_I^\infty) \rightarrow \mathcal{C}(X_C)$ is continuous.*

Proof. We distinguish six cases.

Case (1): $x, y \in X$.

This follows from Proposition 3.4.2.

Case (2): $x, y \in X_I^0$ and $x \neq y$.

Fix some $p \in [x, y] \cap X$. Suppose $r > 0$ and $\epsilon > 0$. Let U, V be the neighbourhoods of x, y respectively, given by Lemma 5.1.1, so that if $u \in U$ and $v \in V$, then we can find $u', v' \in [u, v]$ with $d(x, u') \leq \epsilon/2$, $d(y, v') \leq \epsilon/2$ and $u' \in [u, v']$. From the convexity of the distance function (Proposition 3.4.6), we have that $[u', v'] \subseteq N([x, y], \epsilon/2) \subseteq W(p, r, \epsilon)[x, y]$ and $[x, y] \subseteq N([u', v'], \epsilon/2) \subseteq W(p, r, \epsilon)[u, v]$. (Figure 5b.) Suppose $z \in [u, u']$. Again, by convexity, we have $d(u', [p, z]) \leq \epsilon/2$, and so $d(x, [p, z]) \leq \epsilon$. Thus $z \in C(p, x, \epsilon) \subseteq W(p, r, \epsilon)\{x\}$. Therefore, $[u, u'] \subseteq W(p, r, \epsilon)\{x\}$. Similarly, $[v, v'] \subseteq W(p, r, \epsilon)\{y\}$. We have shown that

$$[u, v] \subseteq W(p, r, \epsilon)[x, y]$$

and

$$[x, y] \subseteq W(p, r, \epsilon)[u, v].$$

In other words, $[u, v] \in P(W(p, r, \epsilon))\{[x, y]\}$. Now, the sets

$$P(W(p, r, \epsilon))\{[x, y]\}$$

as $\epsilon \rightarrow 0$ and $r \rightarrow \infty$ form a neighbourhood base for $[x, y]$ in the Hausdorff topology on $\mathcal{C}(X_C)$. This deals with Case (2).

Case (3): $x = y \in X_I^0$.

Choose any $p \in X$, and suppose $\epsilon > 0$ and $r > 0$. By Lemma 4.3.2, there is some $\delta_0 > 0$ such that if $a, z \in X_C$ with $d(x, a) \leq \delta_0$ and $z\hat{a}p \geq \pi/3$,

then $d(x, [p, z]) \leq \epsilon$. Let $\delta = \min(\delta_0, \epsilon/3)$. Suppose $u, v \in C(p, x, \delta)$, and $(u, v) \notin X_I^\infty \times X_I^\infty$. We claim that $[u, v] \subseteq C(p, x, \epsilon)$.

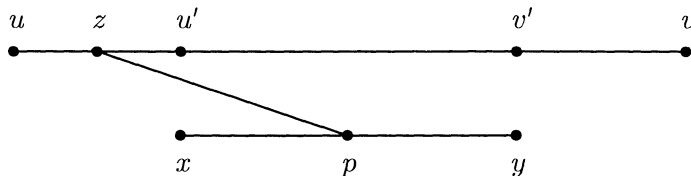


Figure 5b.

To see this, choose $a \in [p, u]$ and $b \in [p, v]$ with $d(x, a) \leq \delta$ and $d(x, b) \leq \delta$, and suppose $z \in [u, v]$. (Figure 5c.) If $d(a, z) \leq 2\delta$, then $d(x, z) \leq \delta + 2\delta \leq \epsilon$, and so $z \in N(x, \epsilon) \subseteq C(p, x, \epsilon)$. Similarly if $d(b, z) \leq 2\delta$. Thus, we can suppose that $d(a, z) \geq 2\delta$ and $d(b, z) \geq 2\delta$, and so, by the Angle Comparison Theorem, we have that $a\hat{z}b \leq \pi/3$. Thus, without loss of generality, we can suppose that $u\hat{z}a \geq \frac{1}{2}(\pi - \pi/3) = \pi/3$. Thus, again by angle comparison, $u\hat{a}z \leq \pi - \pi/3 = 2\pi/3$, and so $z\hat{a}p \geq \pi/3$. It follows that $d(a, [p, z]) \leq \epsilon$, and so $z \in C(p, x, \epsilon)$. This proves the claim that $[u, v] \subseteq C(p, x, \epsilon)$.

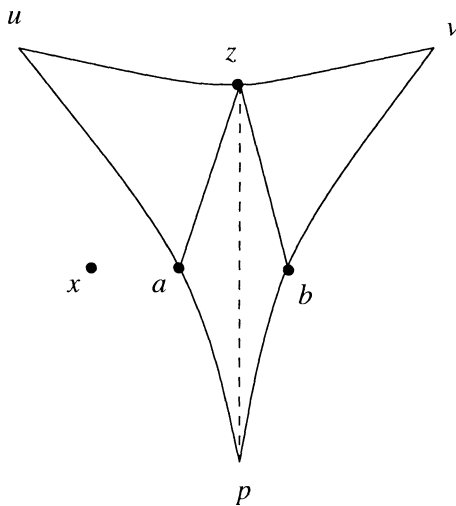


Figure 5c.

Now, for all $r > 0$, we have $C(p, x, \epsilon) \subseteq W(p, r, \epsilon)\{x\}$. Since $W(p, r, \epsilon)$ is symmetric, we have $x \in W(p, r, \epsilon)[u, v]$, and so $[u, v] \in P(W(p, r, \epsilon))\{\{x\}\}$. As $\epsilon \rightarrow 0$ and $r \rightarrow \infty$, the sets $P(W(p, r, \epsilon))\{\{x\}\}$ form a neighbourhood base for $\{x\} = [x, x]$ in the Hausdorff topology on $\mathcal{C}(X_C)$.

Case (4): $x \in X$ and $y \in X_I^0$.

This is similar to Case (2).

Case (5): $x \in X_I^0$ and $y \in X_I^\infty$.

Fix $p \in [x, y] \setminus \{x, y\}$, and suppose $\epsilon > 0$ and $r > 0$. Choose $z \in [p, y]$ with $d(p, z) \geq r$. By Lemma 5.1.3, we can find neighbourhoods U, V about x, y respectively, such that if $u \in U, v \in V$ and $(u, v) \notin X_I^\infty \times X_I^\infty$, then there exist $u', v' \in [u, v]$ with $d(x, u') \leq \epsilon/2, d(y, v') \leq \epsilon/2$ and $u' \in [u, v']$. Arguing as in Case (2), we see that $[u', v'] \subseteq N([x, y], \epsilon/2), [x, z] \subseteq N([u, v], \epsilon/2), [u, u'] \subseteq C(p, x, \epsilon), [v, v'] \subseteq C(p, z, \epsilon)$ and $[z, y] \subseteq C(p, v', \epsilon/2)$. Now $x, z \in A(p, r)$ and so $[u, v] \in P(W(p, r, \epsilon))\{[x, y]\}$.

Case (6): $x \in X$ and $y \in X_I^\infty$.

This is similar to case (5). □

6. Visibility.

In this Chapter, we assume that X satisfies properties (A), (B) and (C), where (C) is the statement:

(C) There exist $p_0 \in X$, and $L_0, R_0 > 0$ such that if $x \in X$ with $d(p_0, x) \geq R_0$, then $\kappa(x) \leq -1/L_0^2 d(p_0, x)^2$.

It follows immediately that if we fix any $L \in (0, L_0)$, then for all $p \in X$, there is some $R = R(p)$ such that if $d(p, x) \geq R$, then $\kappa(x) \leq -1/L^2 d(p, x)$. We aim to show that, with these hypotheses, X is a visibility manifold, and that geodesics vary continuously on $X_C \times X_C$.

6.1. Convergence of asymptotic geodesics. Suppose $y \in X_I^\infty$, and $h : X \cup X_I^0 \rightarrow \mathbb{R}$ is a horofunction about y . (Section 4.2.) Suppose $b_0, b_1 \in X \cup X_I^0$ with $h(b_0) = h(b_1)$. Let $\beta_i : [0, \infty) \rightarrow X \cup X_I^0$ be the geodesic ray $[b_i, y]$. Thus $h(\beta_0(t)) = h(\beta_1(t)) = h(b_0) + t$ for all $t \in [0, \infty)$.

Lemma 6.1.1. $d(\beta_0(t), \beta_1(t)) \rightarrow 0$ as $t \rightarrow \infty$.

In fact, we show that $d(\beta_0(t), \beta_1(t)) \leq A(t + \lambda)^{-\mu}$ where $\mu > 0$ is fixed, and $A, \lambda \geq 0$ depend on b_0 and b_1 .

Proof. We can assume that $b_0, b_1 \in X$. Join b_0 to b_1 by a smooth path $\gamma : [0, 1] \rightarrow X$. Let $t_0 = \max\{h(\gamma(u)) \mid u \in [0, 1]\}$. Let B be the horoball $X \cap h^{-1}([t_0, \infty))$, and let S be the bounding horosphere $X \cap h^{-1}(t_0)$. Let $\rho : X \setminus \text{int } B \rightarrow S$ be the nearest-point retraction. Now, the path $h \circ \gamma : [0, 1] \rightarrow S$ joins $\beta(t_0)$ to $\beta(t_1)$, and, by Lemma 4.2.2, is C^2 . Thus, without loss of generality, we can assume that $b_0, b_1 \in S = h^{-1}(0)$, and that b_0 and b_1 can be joined by a C^2 path $\gamma : [0, 1] \rightarrow S$.

Now, for each $u \in [0, 1]$, let $\beta_u : [0, \infty) \rightarrow X$ be the geodesic ray based at $\gamma(u)$ tending to y . Define $\beta : [0, \infty) \times [0, 1] \rightarrow X$ by $\beta(t, u) = \beta_u(t)$. By Lemma 4.1.5, β is C^2 . Note that $h(\beta(t, u)) = t$ for all $(t, u) \in [0, \infty) \times [0, 1]$.

Also $\frac{\partial \beta}{\partial u}(t, u) = \text{grad } \beta(h(t, u))$. Thus $\left\langle \frac{\partial \beta}{\partial t}(t, u), \frac{\partial \beta}{\partial u}(t, u) \right\rangle = 0$ for all (t, u) . In other words β is a normalised ruled map in the sense of Section 3.1 (except that it is only C^2 and not smooth, though this is more than enough). For a fixed u , the map $[t \mapsto \frac{\partial \beta}{\partial u}(t, u)]$ is a Jacobi field along β_u . Thus the map $[t \mapsto J(t, u)]$ is convex, where $J(t, u) = \left| \frac{\partial \beta}{\partial u}(t, u) \right|$. Given $t \in [0, \infty)$ write $\beta^t : [0, 1] \rightarrow X$ for the C^2 transversal path $[u \mapsto \beta(t, u)]$. Thus $\text{length } \beta^t = \int_0^1 J(t, u) du$. Now, for all $u_1, u_2 \in [0, 1]$ the function $d(\beta(t, u_1), \beta(t, u_2))$ is monotonically non-increasing in t . Thus, for any fixed subinterval $I \subseteq [0, 1]$, the rectifiable lengths of the paths $\beta^t|I$ are non-increasing in t . Now, $\text{length}(\beta^t|I) = \int_I J(t, u) du$. We deduce that for all $u \in [0, 1]$ the map $[t \mapsto J(t, u)]$ is non-increasing.

Now choose $p \in X$, and let $R = R(p)$. Thus, if $d(p, x) \geq R$, then we have $\kappa(x) \leq -1/L^2 d(p, x)^2$. Let $\lambda = \max\{d(p, \gamma(u)) \mid u \in [0, 1]\}$. Thus $t - \lambda \leq d(p, \beta(t, u)) \leq t + \lambda$. Without loss of generality, we can assume that $d(p, \beta(t, u)) \geq R$ for all (t, u) , and so $\kappa(\beta(t, u)) \leq -1/L^2(t + \lambda)^2$.

From the formula in Section 4.2, we find that $J(t, u) \leq J(0, u) (1 + \frac{t}{\lambda})^{-\mu}$ where $\mu = (\sqrt{1 + 4L^2}) - 1 > 0$. Thus

$$\begin{aligned} d(\beta_0(t), \beta_1(t)) &\leq \text{length } \beta^t = \int_0^1 J(t, u) du \\ &\leq \left(1 + \frac{t}{\lambda}\right)^{-\mu} \text{length } \gamma = A(t + \lambda)^{-\mu}, \end{aligned}$$

where $A = \lambda^\mu \text{length } \gamma$. In particular $d(\beta_0(t), \beta_1(t)) \rightarrow 0$ as $t \rightarrow \infty$. \square

6.2. Bi-infinite geodesics. A *bi-infinite geodesic* is a geodesic $\beta : \mathbb{R} \rightarrow X$ parameterised by arc-length. We say that β joins $x \in X_I^\infty$ to $y \in X_I^\infty$ if $\beta(-t) \rightarrow x$ and $\beta(t) \rightarrow y$ as $t \rightarrow \infty$. Clearly the points x and y are determined by β . We refer to them as the “endpoints” of β . Since $d(\beta(-t), \beta(t)) = 2|t|$, the rays $[t \mapsto \beta(-t)]$ and $[t \mapsto \beta(t)]$ for $t \geq 0$ are not asymptotic. Thus the endpoints of β must be distinct. Moreover, the endpoints determine β up to reparameterisation:

Lemma 6.2.1. *Suppose that the bi-infinite geodesics $\alpha, \beta : \mathbb{R} \rightarrow X$ have the same endpoints. Then, there is some $t_0 \in \mathbb{R}$ such that $\beta(t) = \alpha(t + t_0)$.*

Proof. Let $y \in X_I^\infty$ be the common endpoint so that $\alpha \rightarrow y$ and $\beta \rightarrow y$ as $t \rightarrow \infty$. Let h be a horofunction about y . There is some $t_0 \in \mathbb{R}$ such that $h(\alpha(t + t_0)) = h(\beta(t))$ for all $t \in \mathbb{R}$. By Lemma 6.1.1, we have $d(\alpha(t + t_0), \beta(t)) \rightarrow 0$ as $t \rightarrow \infty$. Also $d(\alpha(t + t_0), \beta(t))$ is bounded as $t \rightarrow -\infty$. By Proposition 3.5.6, the map $[t \mapsto d(\alpha(t + t_0), \beta(t))]$ is convex, and thus identically zero. \square

We next want to establish the existence of a bi-infinite geodesic joining any pair of distinct points of X_I^∞ .

Lemma 6.2.2. *Suppose $p \in X$. Then, for all $\theta > 0$, there exists $r > 0$ such that $x, y \in X \cup X_I^\infty$, then either $d(p, [x, y]) \leq r$ or else $x\hat{p}y \leq \theta$.*

Proof. Let $R = R(p)$ and $L > 0$ be the constants defined at the start of this chapter. Let $r = R \max(1, e^{2\pi L^2/\theta})$. Suppose, for contradiction, that $d(p, [x, y]) \geq r$, and $x\hat{p}y \geq \theta$. We form a ruled surface T by joining p to each point $w \in [x, y]$ with a geodesic $[p, w]$ (c.f. Lemma 4.3.2). Thus T is a non-positively curved 3-gon with vertices p, x and y . By Gauss-Bonnet, we have $-\int_T \kappa(z) d\omega(z) \leq \pi$ where $d\omega$ is the area element of T . As in Lemma 4.3.2, we obtain the contradiction:

$$\begin{aligned} \pi &\geq -\int_T \kappa(z) d\omega(z) \geq \int_R^r \frac{\theta t}{L^2 t^2} dt \\ &= \frac{\theta}{L^2} \log(r/R) \geq 2\pi. \end{aligned}$$

□

Proposition 6.2.3. *If $x, y \in X_I^\infty$, and $x \neq y$, then there is a bi-infinite geodesic joining x to y .*

Proof. Fix any $p \in X$. Thus $x\hat{p}y > 0$. Choose sequences $x_n \in [p, x] \cap X$ and $y_n \in [p, y] \cap X$ with $x_n \rightarrow x$ and $y_n \rightarrow y$. By Lemma 6.2.2, we can find points $z_n \in [x_n, y_n]$ with $d(p, z_n)$ bounded. Since $(X_C, \tau(X_C))$ is compact metrisable, we can assume that z_n converges to a point $z \in X_C$. By the lower-semicontinuity of the distance function (Proposition 5.1.4), we see that $d(p, z) < \infty$ and so $z \in X \cup X_I^0$. Thus, by Lemma 4.1.4, we can construct the geodesics $[z, x]$ and $[z, y]$.

Now choose any $a \in [z, x] \setminus \{z, x\}$ and $b \in [z, y] \setminus \{z, y\}$. We claim that $d(a, z) + d(z, b) = d(a, b)$. By Proposition 5.3.2, the geodesic $[z_n, x_n]$ tends to $[z, x]$ in the Hausdorff topology. Since the metric topology on X agrees with that induced by $\tau(X_C)$, we have, in particular, that $d(a, [x_n, z_n]) \rightarrow 0$. Similarly $d(b, [y_n, z_n]) \rightarrow 0$. Thus we can find $a_n \in [x_n, z_n]$ and $b_n \in [y_n, z_n]$ with $d(a, a_n) \rightarrow 0$ and $d(b, b_n) \rightarrow 0$. Now $d(a_n, z_n) + d(z_n, b_n) = d(a_n, b_n)$ and so the claim follows. Thus, since $[a, b]$ is the unique geodesic from a to b , we have that $z \in [a, b]$. It follows that $z \in X$, and $[x, z] \cup [z, y]$ gives a bi-infinite geodesic joining x to y . □

If $x, y \in X_I^\infty$ and $x \neq y$, we write $[x, y] = \{x, y\} \cup \text{image } \beta$, where β is the unique (up to parameterisation) geodesic joining x to y . It is easily seen that $[x, y]$ is closed in $(X_C, \tau(X_C))$. Note that $[x, y] = [y, x]$. We write $[x, x] = \{x\}$.

6.3. Continuity of geodesics.

Lemma 6.3.1. *Suppose $p \in X$, and $\kappa(p) < 0$. Then for all $\epsilon > 0$, there exists $\delta > 0$ such that if $x, y \in X_C \setminus \{p\}$ with $x\hat{p}y \geq \pi - \delta$, then $d(p, [x, y]) \leq \epsilon$.*

Proof. By continuity of κ , we have constants $h > 0$ and $k > 0$ such that $N(p, h) \subseteq X$ and $\kappa(z) \leq -k$ for all $z \in N(p, h)$. Given $\epsilon \in (0, h)$, let $\delta = \min(\pi/2, k\pi h^2/4)$. Suppose that $x, y \in X_C \setminus \{p\}$ are distinct with $d(p, [x, y]) \geq \epsilon$. Let $\theta = x\hat{p}y$. We claim that $\theta \leq \pi - \delta$. We can suppose that $\theta \geq \pi/2$. For the moment, assume that $x, y \in X \cup X_I^0$. We form a ruled surface by joining each $w \in [x, y]$ to p by the geodesic $[p, w]$ (c.f. Lemma 4.3.2). Integrating the curvature, we find that

$$\pi - \theta \geq \int_0^h k \left(\frac{\pi}{2} t \right) dt = k\pi h^2/4 \geq \delta.$$

Thus $\theta \leq \pi - \delta$ as required.

We can deal with the general case by taking the sequences $x_n, y_n \in [x, y] \cap X$ with $x_n \rightarrow x$ and $y_n \rightarrow y$, and noting that $\overrightarrow{px_n} \rightarrow \overrightarrow{px}$ and $\overrightarrow{py_n} \rightarrow \overrightarrow{py}$. \square

We give $X_C \times X_C$ the product topology, and give $\mathcal{C}(X_C)$ the Hausdorff topology.

Proposition 6.3.2. *The map $[(x, y) \mapsto [x, y]] : X_C \times X_C \rightarrow \mathcal{C}(X_C)$ is continuous.*

Proof. Note that Lemmas 5.1.1 and 5.1.3 generalise easily to the case where $(u, v) \in X_I^\infty \times X_I^\infty$, with essentially the same proofs. Thus the argument of Proposition 5.3.2 works to show that the map $[(x, y) \mapsto [x, y]]$ extended to all of $X_C \times X_C$ is continuous at each point $(x, y) \in (X_C \times X_C) \setminus (X_I^\infty \times X_I^\infty)$. It thus remains to show that it is continuous at each point $(x, y) \in X_I^\infty \times X_I^\infty$. There are two cases.

Case (1): $x \neq y$.

Fix some $p \in [x, y] \cap X$ with $\kappa(p) < 0$. Suppose $\epsilon > 0$ and $r > 0$. Let $\delta > 0$ be the constant given by Lemma 6.3.1, and set $\eta = \min(\epsilon, r \sin(\delta/4))$. Choose points $a \in [p, x]$ and $b \in [p, y]$, with $d(p, a) = d(p, b) = r + 2\epsilon$. Let $U = C(p, a, \eta)$ and $V = C(p, b, \eta)$. If $u \in U$ and $v \in V$, then by the Angle Comparison Theorem (Proposition 3.4.4), we find that $x\hat{p}u \leq \delta/2$ and $y\hat{p}v \leq \delta/2$. Thus $u\hat{p}v \geq \pi - \delta$ and so $d(p, [u, v]) \leq \epsilon$. Thus, there is some $q \in [u, v]$ with $d(p, q) \leq \epsilon$. If $u \in X_I^\infty$, then $[p, u]$ and $[q, u]$ are asymptotic, and so, since $d(a, [p, u]) \leq \eta \leq \epsilon$, we can find $u' \in [q, u]$ with $d(a, u') \leq 2\epsilon$. If $u \in X \cup X_I^0$, we can apply The Angle Comparison Theorem to

find such a u' . Similarly, we can find $v' \in [q, v]$ with $d(b, v') \leq 2\epsilon$. Note that $d(p, u') \geq r$ and $d(p, v') \geq r$. By convexity of the distance function, we have $[u', v'] \subseteq N([a, b], 2\epsilon)$ and $[a, b] \subseteq N([u', v'], 2\epsilon)$. Also $[x, a] \subseteq C(p, u', 2\epsilon)$ and $[y, b] \subseteq C(p, v', 2\epsilon)$. If $z \in [u, u']$, then by angle comparison, applied to zpq , we see that $d(u', [p, z]) \leq 2\epsilon$, and so $d(a, [p, z]) \leq 4\epsilon$. This shows that $[u, u'] \subseteq C(p, a, 4\epsilon)$. Similarly, $[v, v'] \subseteq C(p, b, 4\epsilon)$. Since $a, b, u', v' \in A(p, r)$, we have that $[x, y] \subseteq W(p, r, 4\epsilon)[u, v]$ and $[u, v] \subseteq W(p, r, 4\epsilon)[x, y]$. In other words, $[u, v] \in P(W(p, r, 4\epsilon))\{[x, y]\}$. As $\epsilon \rightarrow 0$ and $r \rightarrow \infty$, the sets $P(W(p, r, 4\epsilon))\{[x, y]\}$ form a neighbourhood base for $[x, y]$ in the Hausdorff topology on $\mathcal{C}(X_C)$.

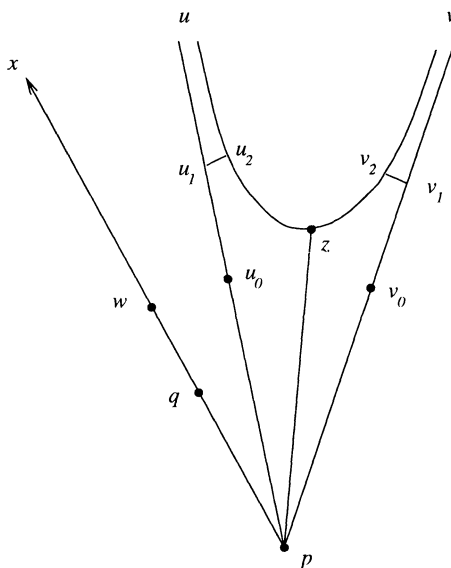


Figure 6.

Case (2): $x = y$.

Choose any point $p \in X$. Suppose $p \in X$. Suppose $r_0 > 0$ and $\epsilon > 0$. Let $q \in [p, x]$ be the point with $d(p, q) = r_0$. By the continuity of the logarithm map (Section 4.5), there is some $\theta > 0$ such that if $q' \in X \cup X_I^0$ with $d(p, q') = r_0$ and $\widehat{q}p q' \leq 2\theta$, then $q' \in N(q, \epsilon)$. Thus if $z \in X_C$ with $d(p, z) \geq r_0$ and $x\widehat{p}z \leq 2\theta$, then $z \in C(p, q, \epsilon)$.

Given $\theta > 0$, and $p \in X$, let $r > 0$ by the constant given by Lemma 6.2.2. Choose any $\eta > 0$ and let $R = \max(r_0 + 4\eta, r + 5\eta, \eta \operatorname{cosec} \theta)$. Let $w \in [p, y]$ be the point with $d(p, w) = r$. Thus, by angle comparison, if $u \in C(p, w, \eta)$ then $y\widehat{p}u \leq \theta$.

Now suppose that $u, v \in C(p, w, \eta)$. Choose $u_0 \in [p, u]$ and $v_0 \in [p, v]$ with $d(w, u_0) \leq \eta$ and $d(w, v_0) \leq \eta$. Suppose $z \in [u, v] \setminus \{u, v\}$. If $u \in X_I^\infty$,

then $[u_0, u]$ and $[z, u]$ are asymptotic, and so we can find $u_1 \in [u_0, u]$ and $u_2 \in [z, u]$ with $d(u_1, u_2) \leq \eta$ (Lemma 6.1.1). If $u \in X_I^0$, take $u_1 = u_2 = u$. Similarly, we find $v_1 \in [v_0, v]$ and $v_2 \in [z, v]$ with $d(v_1, v_2) \leq \eta$. (Figure 6.) Thus

$$\begin{aligned} 2d(p, z) &\geq d(p, u_1) + d(p, v_1) - d(z, u_1) - d(z, v_1) \\ &\geq d(p, u_0) + d(p, v_0) + (d(u_0, u_1) + d(v_0, v_1) - d(u_2, v_2)) - 2\eta \\ &\geq 2d(p, w) - 8\eta, \end{aligned}$$

and so $d(p, z) \geq d(p, w) - 4\eta \geq \max(r_0, r + \eta)$. Since z is arbitrary, we see that $d(p, [u, v]) \geq r + \eta$. Given this, we see in particular that $d(p, [z, u_2]) \geq r + \eta$ and so $d(p, [z, u_1]) \geq r$. Thus $z\hat{p}u_1 = z\hat{p}u \leq \theta$. Since also $x\hat{p}u \leq \theta$ we have $x\hat{p}z \leq 2\theta$. Since $d(p, z) \geq r$, it follows that $z \in C(p, q, \epsilon)$.

We have shown that if $u, v \in C(p, w, \eta)$, then $[u, v] \subseteq C(p, q, \epsilon)$. We deduce that $[u, v] \in P(W(p, r_0, \epsilon))\{\{x\}\}$. As $r_0 \rightarrow \infty$ and $\epsilon \rightarrow 0$, these sets form a neighbourhood base for $\{x\} = [x, x]$ in the Hausdorff topology on $\mathcal{C}(X_C)$. \square

References

- [AbS] U. Abresch and V. Schroeder, *Graph manifolds, ends of negatively curved spaces and the hyperbolic 120-cell space*, J. Diff. Geom., **35** (1992), 299–336.
- [Ah] L.V. Ahlfors, *Curvature properties of Teichmüller space*, J. d'Anal. Math., **9** (1961), 161–176.
- [Alek] A.D. Aleksandrov, *Ruled surfaces in metric spaces*, Vestnik Leningrad Univ. **12** (1957), 5–26 (Russian).
- [AlexB] S.B. Alexander and R.L. Bishop, *The Hadamard-Cartan theorem in locally convex metric spaces*, L'Enseign. Math. **36** (1990), 309–320.
- [An] M.T. Anderson, *The Dirichlet problem at infinity for manifolds of negative curvature*, J. Diff. Geom., **18** (1983), 701–721.
- [BaGS] W. Ballmann, M. Gromov and V. Schroeder, *Manifolds of non-positive curvature*, Progress in Maths., **61**, Birkhäuser (1985).
- [BiO] R.L. Bishop and B. O'Neill, *Manifolds of negative curvature*, Trans. Amer. Math. Soc., **145** (1969), 1–49.
- [Bo] B.H. Bowditch, *Some results on the geometry of convex hulls in manifolds of pinched negative curvature*, Comment. Math. Helv., **69** (1994), 49–81.
- [BrH] M.R. Bridson and A. Haefliger, *Non-positively curved metric spaces*, in preparation.
- [EO] P. Eberlein and B. O'Neill, *Visibility manifolds*, Pacific J. Math., **46** (1973), 45–110.
- [GH] E. Ghys, P. de la Harpe (ed.), *Sur les groupes hyperboliques d'après Mikhael Gromov*, Progress in Maths., **83**, Birkhäuser (1990).
- [Ha] J. Hass, *Bounded 3-manifolds admit negatively curved metrics with concave boundary*, J. Diff. Geom., **40** (1994), 449–459.

- [HeI] E. Heintze and H.C. Im Hof, *Geometry of horospheres*, J. Diff. Geom., **12** (1977), 481–491.
- [K] J.L. Kelley, *General topology*, Graduate Texts in Maths., **21**, Springer-Verlag (reprint of Van Nostrand edition 1955).
- [S] M. Spivak, *A comprehensive introduction to differential geometry*, Publish or Perish (1979).
- [Tra] S. Trapani, *On the determinant of the bundle of meromorphic differentials on the Deligne-Mumford compactification of the moduli space of Riemann surfaces*, Math. Annalen, **293** (1992), 481–459.
- [Tro] A. Tromba, *On a natural algebraic affine connection on the space of almost complex structures and the curvature of Teichmüller space with respect to its Weil-Peterssen metric*, Manuscripta Math., **56** (1986), 475–497.
- [W1] S.A. Wolpert, *Non-completeness of the Weil-Peterssen metric for Teichmüller space*, Pacific J. Math., **61** (1975), 573–577.
- [W2] ———, *Geodesic length functions and the Neilsen problem*, J. Diff. Geom., **25** (1987), 275–296.

Received July 30, 1993 and revised June 12, 1995. This article was prepared at the University of Melbourne, with the support of an A.R.C. Fellowship.

UNIVERSITY OF SOUTHAMPTON
HIGHFIELD, SOUTHAMPTON SO17 1BJ
GREAT BRITAIN
E-mail address: bhb@maths.soton.ac.uk

Current address:
UNIVERSITY OF MELBOURNE
PARKVILLE, VICTORIA 3052
AUSTRALIA

PACIFIC JOURNAL OF MATHEMATICS

Volume 172 No. 1 January 1996

A class of incomplete non-positively curved manifolds	1
BRIAN BOWDITCH	
The quasi-linearity problem for C^* -algebras	41
L. J. BUNCE and JOHN DAVID MAITLAND WRIGHT	
Distortion of boundary sets under inner functions. II	49
JOSE LUIS FERNANDEZ PEREZ, DOMINGO PESTANA and JOSÉ RODRÍGUEZ	
Irreducible non-dense $A_1^{(1)}$ -modules	83
VJACHESLAV M. FUTORNY	
M -hyperbolic real subsets of complex spaces	101
GIULIANA GIGANTE, GIUSEPPE TOMASSINI and SERGIO VENTURINI	
Values of Bernoulli polynomials	117
ANDREW GRANVILLE and ZHI-WEI SUN	
The uniqueness of compact cores for 3-manifolds	139
LUKE HARRIS and PETER SCOTT	
Estimation of the number of periodic orbits	151
BOJU JIANG	
Factorization of p -completely bounded multilinear maps	187
CHRISTIAN LE MERDY	
Finitely generated cohomology Hopf algebras and torsion	215
JAMES PEICHENG LIN	
The positive-dimensional fibres of the Prym map	223
JUAN-CARLOS NARANJO	
Entropy of a skew product with a Z^2 -action	227
KYEWON KOH PARK	
Commuting co-commuting squares and finite-dimensional Kac algebras	243
TAKASHI SANO	
Second order ordinary differential equations with fully nonlinear two-point boundary conditions. I	255
H. BEVAN THOMPSON	
Second order ordinary differential equations with fully nonlinear two-point boundary conditions. II	279
H. BEVAN THOMPSON	
The flat part of non-flat orbifolds	299
FENG XU	



0030-8730(1996)172:1;1-F